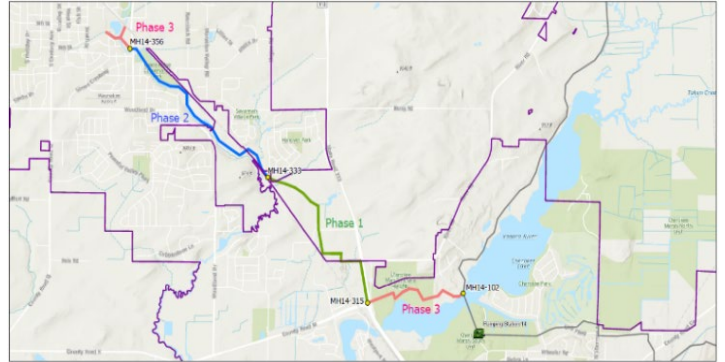


## Northeast Interceptor (NEI) Waunakee Extension Capacity Improvements Phase 1 Project

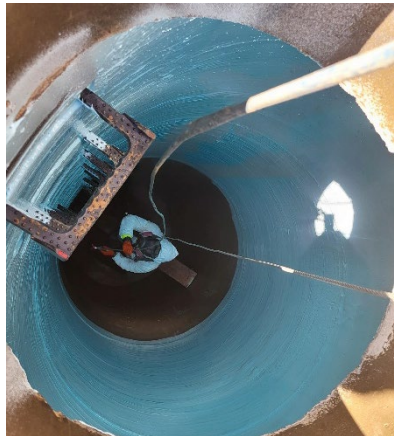
**Construction Update: 9/05/2025**

### **BACKGROUND:**

- MMSD's NEI Waunakee Extension Capacity Improvement Projects will provide additional capacity for the growing areas of Dane, Waunakee and Westport. Phase 1 provides relief and replacement sewers from the Yahara Heights County Park to the south end of the Savannah Village Subdivision.
- [Phase 1 Location and Route.](#)



NEI – WE Capacity Improvement Overview



Epoxy Manhole Coating

### **WORK:**

- [Construction Progress and Location Map](#)

#### **- Current Work:**

- Manhole coatings
- Project seed restoration
- Switch flow into new pipe

#### **- Future Work:**

- Abandon old pipe (Kennedy Dr to the north. To the south will remain in service as a relief section with the new pipe)
- Complete restoration
- Kennedy Drive asphalt paving and opening
- Existing pipe repair at NW CTH M/STH 113



Existing Flow Bypass Set up – Needed to Switch Flow into the New Pipe



Seed Restoration along Kennedy Drive

### **TRAFFIC IMPACTS:**

- **STH 113:** Traffic Restrictions are currently in place:
  - On going NB STH 113 shoulder closures
  - Daily NB STH 113 outside lane closures from 7am to 4pm (when work requires)
  
- **River Road @ STH 113:**
  - Permanent restoration complete. No future closures planned.
  
- **Kennedy Drive:** – *Currently closed with ongoing work. Restoration/paving planned for late September/Early October. Waiting for flow switch to be completed and some remaining work at the STH 113/Kennedy Dr. casing bore.*