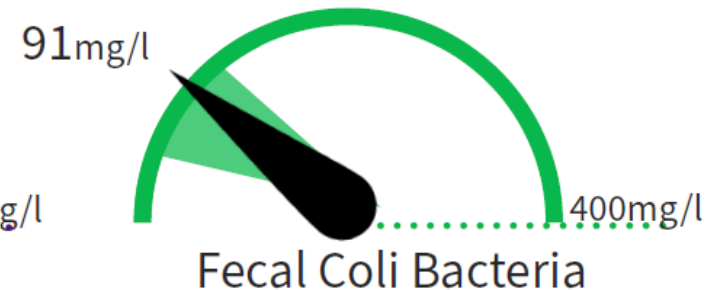
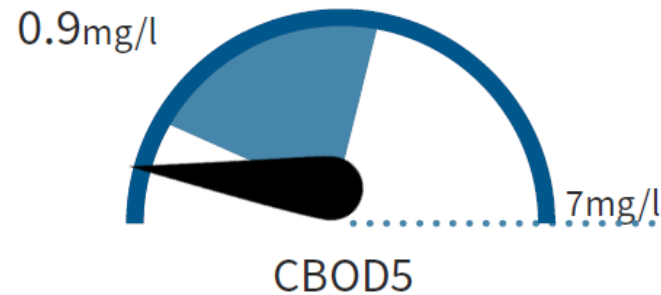
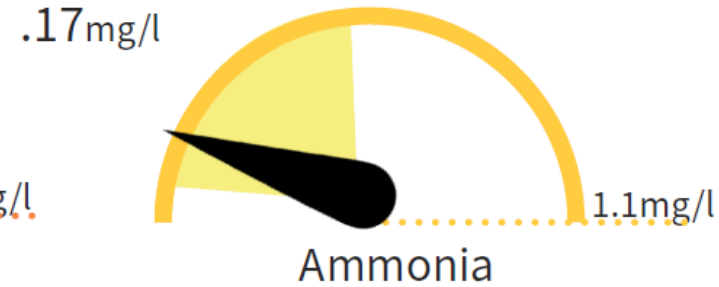


An aerial photograph of a wastewater treatment plant. In the foreground, there are several large, circular concrete tanks with metal walkways and railings. A brick building with a flat roof is situated next to them. In the background, there are more industrial buildings, including a large one with a white upper section and a brown lower section. Several large, dome-shaped storage tanks are visible in the distance. The entire scene is overlaid with a semi-transparent blue filter.

July Operations Report

Madison Metropolitan Sewerage District

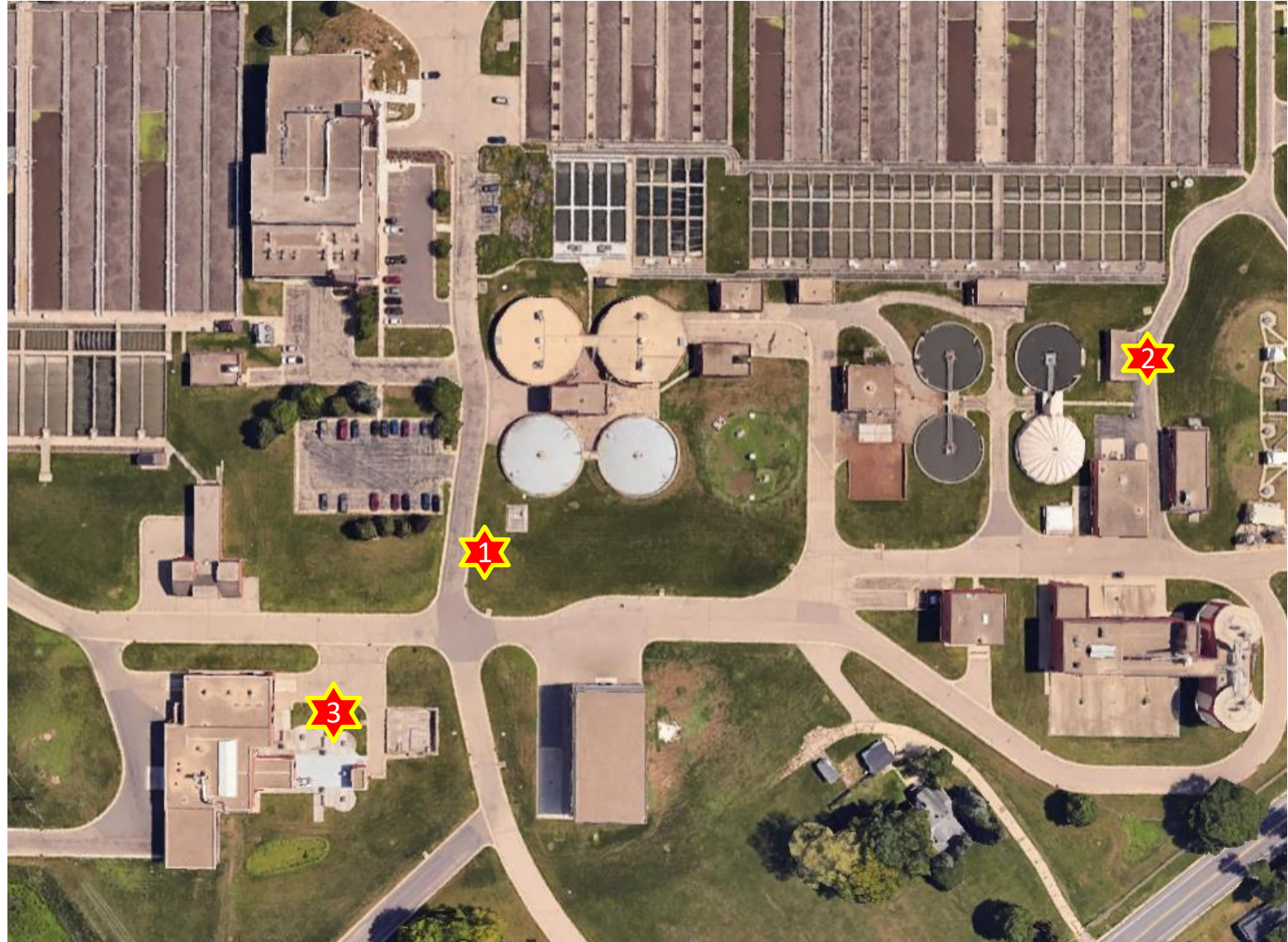
July Plant Performance



Shaded area represents one standard deviation around the 3-year average

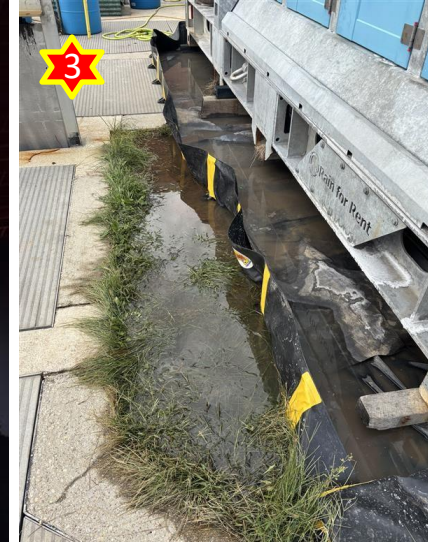
August Treatment Plant Overflows (TFO)

- ★ 1 Aug 11, 11 pm
 - Bypass pumping air release
- ★ 2 Aug 12, 2 am
 - DAF pressure tank
- ★ 3 Aug 20, 3:30 pm
 - Bypass pump spill containment



August Treatment Plant Overflows (TFO)

- ★ 1 Aug 11, 11 pm
 - Bypass pumping air release
- ★ 2 Aug 12, 2 am
 - DAF pressure tank
- ★ 3 Aug 20, 3:30 pm
 - Bypass pump spill containment





Thank you

Madison Metropolitan Sewerage District

