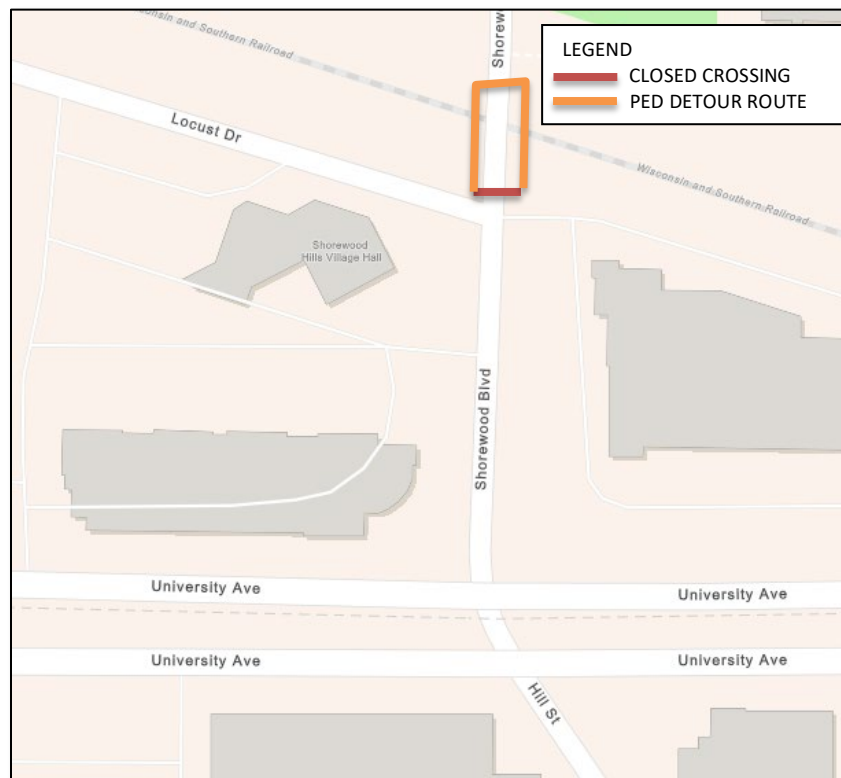


PEDESTRIAN DETOURS

Effective during select weeks
from May – August 2025.

Associated with the West Interceptor Rehab-Segoe Road to
Shorewood Boulevard Project



Pedestrian Traffic Change	Streets Impacted
Crossing Closures	Shorewood Blvd at Locust Drive, north side.
Detours on	Crossing north of railroad tracks.

Learn more about the project and sign up for updates at
www.madsewer.org/segoe-shorewood.