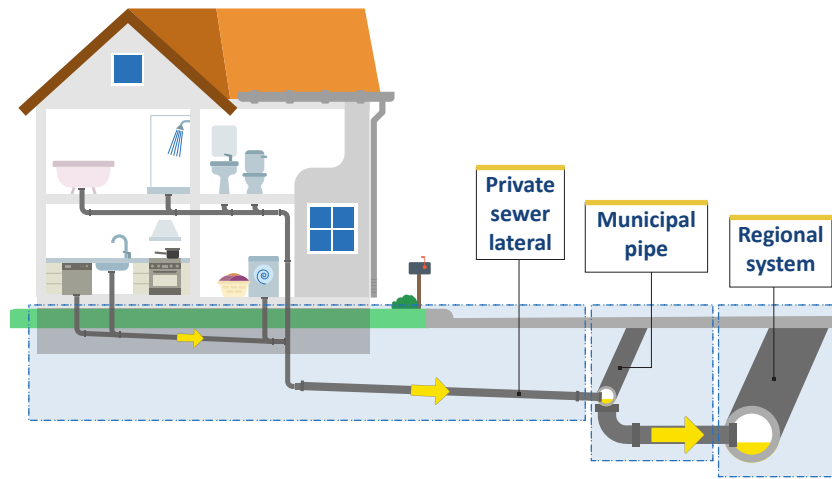


# PRIVATE SEWER LATERALS

In urban areas, most homes and businesses are equipped with private sewer laterals. Laterals carry wastewater from your property into the collection system.

Property owners are responsible for maintaining and repairing all private sewer laterals.

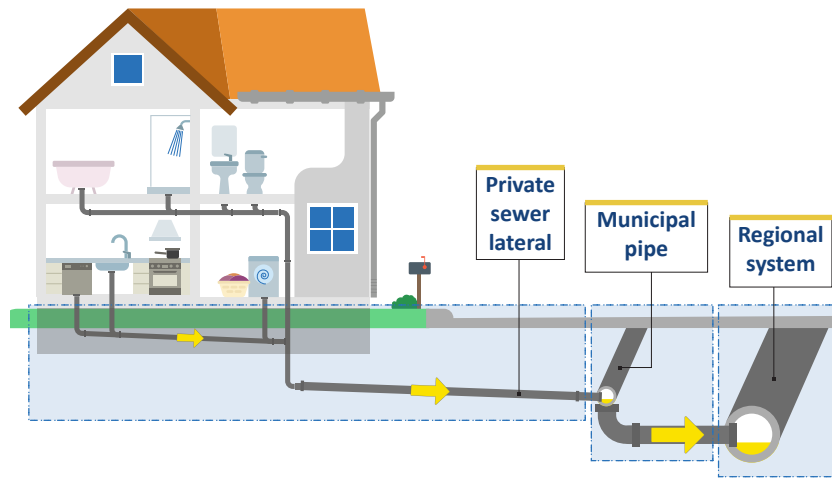


**DRi!PS**  
[madsewer.org/driips](http://madsewer.org/driips)

# PRIVATE SEWER LATERALS

In urban areas, most homes and businesses are equipped with private sewer laterals. Laterals carry wastewater from your property into the collection system.

Property owners are responsible for maintaining and repairing all private sewer laterals.

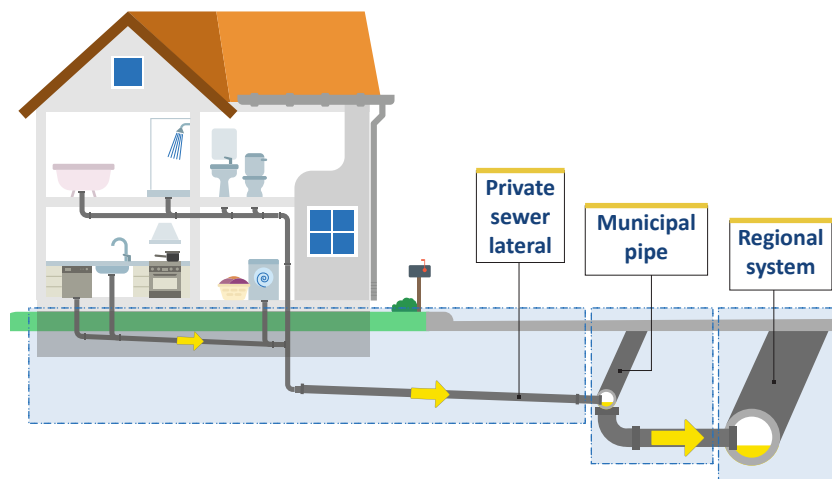


**DRi!PS**  
[madsewer.org/driips](http://madsewer.org/driips)

# PRIVATE SEWER LATERALS

In urban areas, most homes and businesses are equipped with private sewer laterals. Laterals carry wastewater from your property into the collection system.

Property owners are responsible for maintaining and repairing all private sewer laterals.



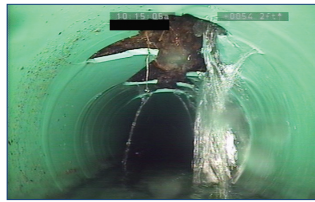
**DRi!PS**  
[madsewer.org/driips](http://madsewer.org/driips)

# CARING FOR PRIVATE SEWER LATERALS

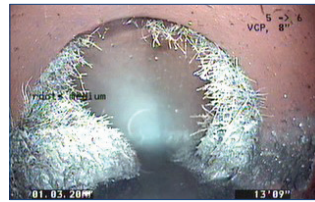
Inspect your sewer lateral occasionally for common concerns.

A service provider can use a video scope to view its condition or find other issues. Early detection helps prevent serious lateral damage, basement issues, contamination, sinkholes and more.

Service providers clean clogs or blockages via the cleanout, a capped pipe that provides easy access to the lateral. Ensure your cleanout is sealed to minimize I&I or debris in the system.



► Cracks or breaks



► Root intrusions



► Blockages or clogs



► Uncapped lateral cleanout

DRIiPS



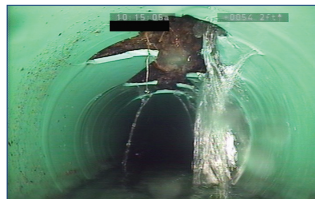
[madsewer.org/driips](http://madsewer.org/driips)

# CARING FOR PRIVATE SEWER LATERALS

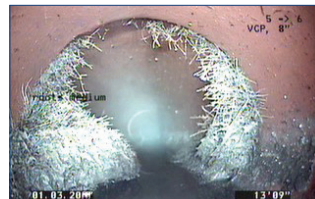
Inspect your sewer lateral occasionally for common concerns.

A service provider can use a video scope to view its condition or find other issues. Early detection helps prevent serious lateral damage, basement issues, contamination, sinkholes and more.

Service providers clean clogs or blockages via the cleanout, a capped pipe that provides easy access to the lateral. Ensure your cleanout is sealed to minimize I&I or debris in the system.



► Cracks or breaks



► Root intrusions



► Blockages or clogs



► Uncapped lateral cleanout

DRIiPS



[madsewer.org/driips](http://madsewer.org/driips)

# CARING FOR PRIVATE SEWER LATERALS

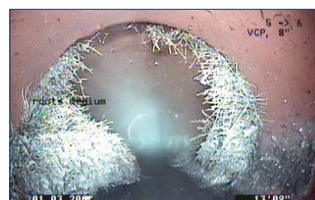
Inspect your sewer lateral occasionally for common concerns.

A service provider can use a video scope to view its condition or find other issues. Early detection helps prevent serious lateral damage, basement issues, contamination, sinkholes and more.

Service providers clean clogs or blockages via the cleanout, a capped pipe that provides easy access to the lateral. Ensure your cleanout is sealed to minimize I&I or debris in the system.



► Cracks or breaks



► Root intrusions



► Blockages or clogs



► Uncapped lateral cleanout

DRIiPS



[madsewer.org/driips](http://madsewer.org/driips)