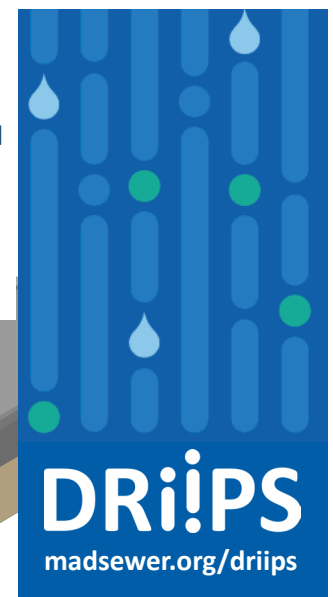
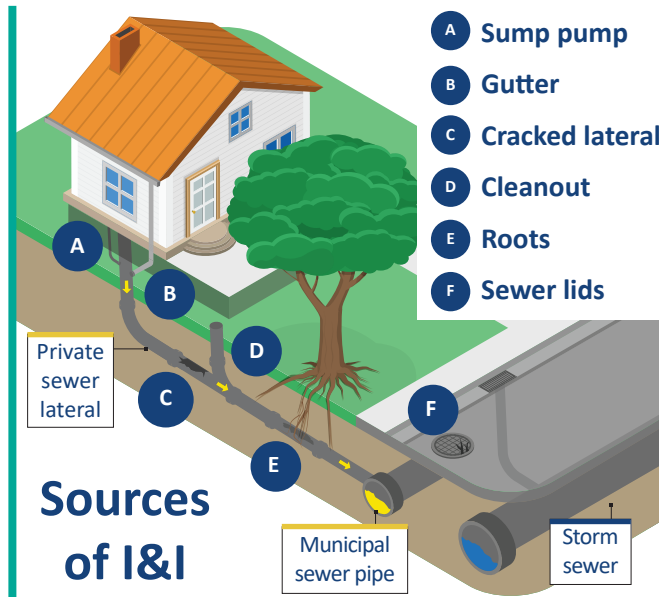


INFLOW AND INFILTRATION (I&I)

Keep clear water out of sewers

Inflow and infiltration (I&I) is clear water, from rain or groundwater, that enters the wastewater system from cracks and holes in public and private sewers.

Each day, six million gallons of I&I enters the sanitary sewer system and is treated unnecessarily.

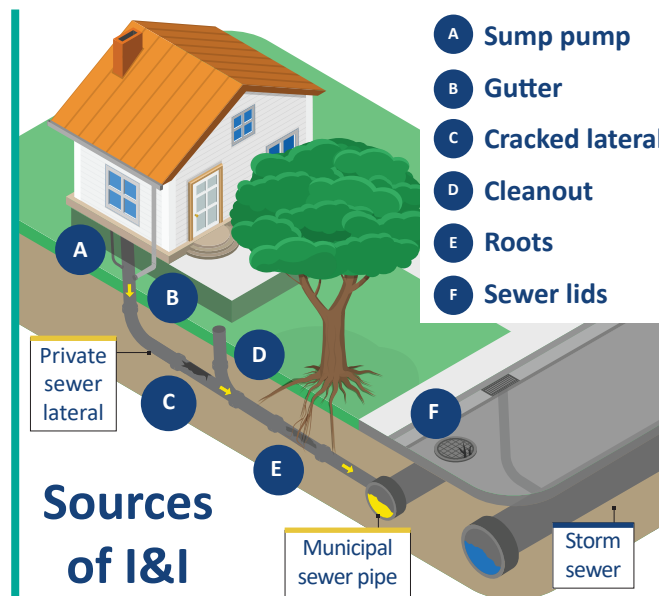


INFLOW AND INFILTRATION (I&I)

Keep clear water out of sewers

Inflow and infiltration (I&I) is clear water, from rain or groundwater, that enters the wastewater system from cracks and holes in public and private sewers.

Each day, six million gallons of I&I enters the sanitary sewer system and is treated unnecessarily.

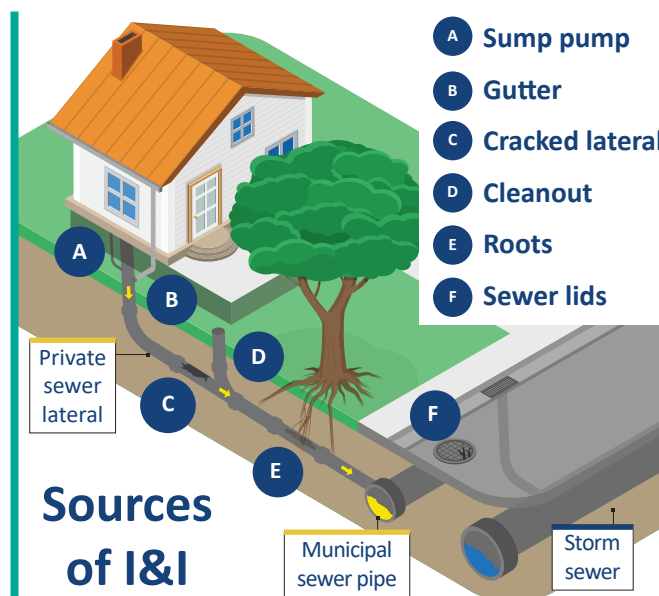


INFLOW AND INFILTRATION (I&I)

Keep clear water out of sewers

Inflow and infiltration (I&I) is clear water, from rain or groundwater, that enters the wastewater system from cracks and holes in public and private sewers.

Each day, six million gallons of I&I enters the sanitary sewer system and is treated unnecessarily.



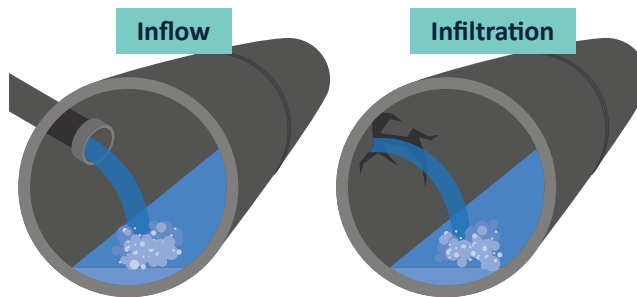
Disconnect and Reduce Inflow and Infiltration to Private Sewers (DRIIPS)

Keeping clear water and wastewater separate requires a collective effort.

- Check private sewer laterals regularly for cracks, holes or roots. If your plumber finds an issue, address it right away.
- Ensure your stormwater connections (e.g. sump pumps and gutters) are not draining into the sanitary system.

By reducing I&I, you can help:

- Minimize sewer overflows to waterways
- Lower the risk of sewer backups in properties
- Avoid costs of building larger sewer pipes



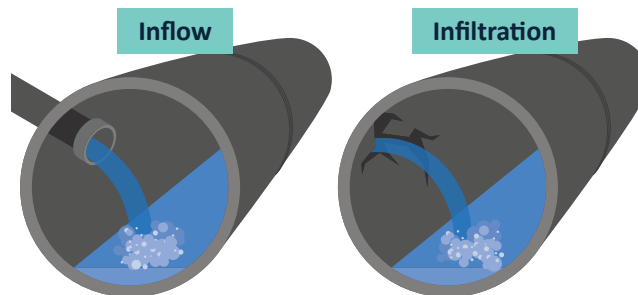
Disconnect and Reduce Inflow and Infiltration to Private Sewers (DRIIPS)

Keeping clear water and wastewater separate requires a collective effort.

- Check private sewer laterals regularly for cracks, holes or roots. If your plumber finds an issue, address it right away.
- Ensure your stormwater connections (e.g. sump pumps and gutters) are not draining into the sanitary system.

By reducing I&I, you can help:

- Minimize sewer overflows to waterways
- Lower the risk of sewer backups in properties
- Avoid costs of building larger sewer pipes



Disconnect and Reduce Inflow and Infiltration to Private Sewers (DRIIPS)

Keeping clear water and wastewater separate requires a collective effort.

- Check private sewer laterals regularly for cracks, holes or roots. If your plumber finds an issue, address it right away.
- Ensure your stormwater connections (e.g. sump pumps and gutters) are not draining into the sanitary system.

By reducing I&I, you can help:

- Minimize sewer overflows to waterways
- Lower the risk of sewer backups in properties
- Avoid costs of building larger sewer pipes

