

## LOWER BADGER MILL CREEK INTERCEPTOR UPDATE

ISSUE NO. 8

Madison Metropolitan Sewerage District

MAY 20, 2025



[www.madsewer.org](http://www.madsewer.org)

*This publication was prepared by the Madison Metropolitan Sewerage District to keep citizens informed about the Lower Badger Mill Creek Interceptor Project*

### Phase 6 Construction Starting in Shady Oak Lane – Mid June See Project Website for Updates - [www.madsewer.org/lbmci](http://www.madsewer.org/lbmci)

#### **Phase 6 Construction**

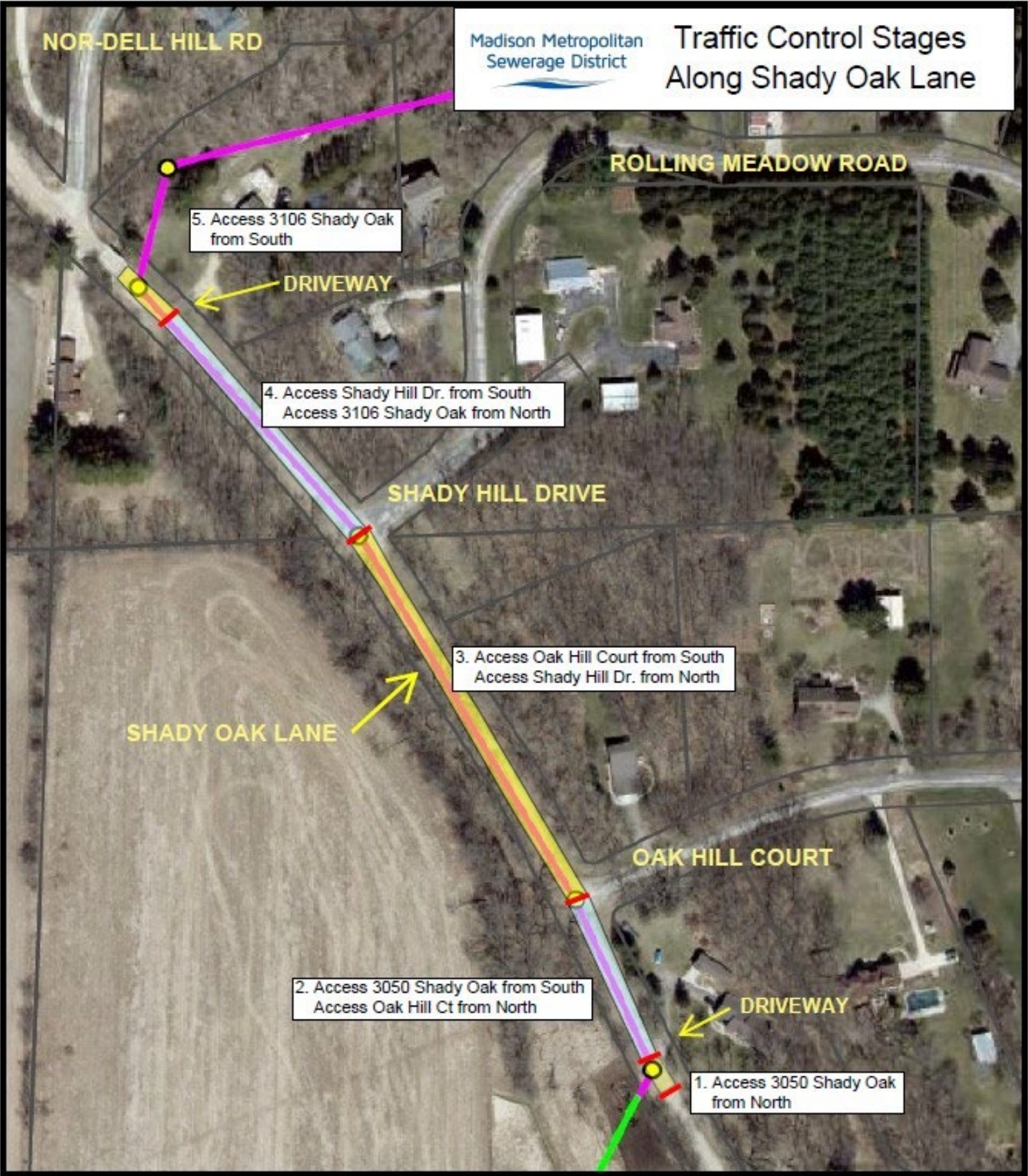
Bids for the Lower Badger Mill Creek Interceptor Phase 6 project were opened on February 27, 2025. Integrity Grading and Excavating, Inc. was the low bidder, and they were awarded the project on March 13, 2025. Some exploratory excavations with a vacuum truck have been performed in Shady Oak Lane and Midtown Road to determine the exact elevations of various utilities. At the time of this writing, tree removals along the pipe corridor are scheduled for the week of May 26. Tree removals will likely have taken place before this newsletter is mailed.

Construction in Shady Oak Lane is scheduled to begin in mid-June. Work will begin approximately 300 feet south of Oak Hill Court. Excavation to install the pipe in Shady Oak Lane will require complete closure of the road. Access to Oak Hill Court, Shady Hill Drive, and two private driveways will be maintained from one direction or the other during construction. The traffic control stages in Shady Oak Lane are listed in the table below and shown in the map on the next page.

TRAFFIC STAGE	ACCESS TO DRIVEWAY OR ROAD FROM NORTH OR SOUTH			
	3050 Shady Oak	Oak Hill Court	Shady Hill Drive	3106 Shady Oak
1	North	North	North	North
2	South	North	North	North
3	South	South	North	North
4	South	South	South	North
5	South	South	South	South

Except for 3050 Shady Oak Lane, access to all driveways south of Oak Hill Court will be from the south (from County Highway PD) for the duration of the work in Shady Oak Lane. Access to Nor-Dell Hill Road and all driveways and other roads north of the bridge will be from the north (from Midtown Road). Construction in Shady Oak Lane, including road restoration with asphalt, is scheduled to be completed by August 15, 2025, to avoid interference with the Wisconsin Ironman race on September 7.

At the bridge south of Nor-Dell Hill Road, the Phase 6 pipe will veer north into a ravine that cuts through the Johnstown Moraine, a terminal glacial moraine deposited approximately 20,000 to 30,000 years ago during the last ice age. Initial construction activities in Phase 6 will include tree removals along the interceptor route in the ravine and exploratory test pits to determine the elevation of bedrock. During design, a geophysical survey conducted by the Wisconsin Geological and Natural History Survey (WGNHS) indicated that some of the interceptor pipe may be constructed in bedrock. The contractor will determine if bedrock is present and create a rock excavation plan if bedrock is found in the test pits.



Madison Metropolitan  
Sewerage District

# Traffic Control Stages Along Shady Oak Lane

ROLLING MEADOW ROAD

5. Access 3106 Shady Oak  
from South

DRIVEWAY

4. Access Shady Hill Dr. from South  
Access 3106 Shady Oak from North

SHADY HILL DRIVE

3. Access Oak Hill Court from South  
Access Shady Hill Dr. from North

SHADY OAK LANE

OAK HILL COURT

2. Access 3050 Shady Oak from South  
Access Oak Hill Ct from North

DRIVEWAY

1. Access 3050 Shady Oak  
from North

The route of the Phase 6 interceptor is constrained by current property use and topography, particularly the ravine. The design team worked with the Town and City of Verona, City of Madison, and private property owners to fine-tune the route. Restoration will be with asphalt on roads and topsoil in farm fields. In the ravine, the surface will be restored with a native woodland seed mix. The seed and topsoil will be held in place with erosion matting.

### **Schedule**

Below is the anticipated construction schedule for Phase 6:

- Construction Start: May 2025
- Complete Shady Oak Lane: August 15, 2025
- Substantial Completion: June 1, 2026
- Final Completion: July 1, 2026

### **Private Well Evaluation Summary**

As mentioned in the last newsletter, the District has heard and been sensitive to property owners with wells in the area. A detailed study was performed to describe regional geology and hydrogeology; potential private well risks (existing risks and construction-related risks); private well identification and screening; private well monitoring; and a contingency plan for private wells during construction. The technical memorandum identifies potential concerns during construction and outlines a process to address concerns as situations arise. The technical memorandum for the Private Well Review is posted to the District's website at [www.madsewer.org/lbmci](http://www.madsewer.org/lbmci).

### **Project History and Overview**

Representatives from the District, Town of Verona, City of Verona, and City of Madison met in 2001 to discuss planning for sewerage service in the Lower Badger Mill Creek drainage basin. This basin includes parts of the far west side of Madison, Town of Middleton, Town of Verona, and City of Verona. It was determined that the best way to serve the basin was with 30,000 feet of sanitary sewer interceptor pipe (see Figure 1).

The preliminary design of the entire interceptor pipe was started in 2004 and completed in 2006. The upper 12,000 feet of the regional interceptor was constructed by the City of Madison in 2015 and 2016. The lower 9,500 feet was constructed by the District in Phases 1 through 4 from 2006 to 2018.

Phases 5 and 6 will complete the final "middle" 8,500 feet of the interceptor pipe. Phase 5 included the sewer construction between CTH PD and Shady Oak Lane. Phase 6 will be constructed along Shady Oak Lane for approximately 1,250 feet and then be extended to the northeast and north to Mid Town Road (see Figure 2). When complete, the new interceptor pipe will enable the decommissioning of a temporary City of Madison sanitary sewage pump station (also called a lift station) at Mid Town Road. While a preliminary design was completed in 2006, the District revisited the Phase 5 and Phase 6 preliminary design to incorporate current stakeholder feedback and additional project data.

### **Project Website and Project Updates**

Interested parties can view project information and sign up for project updates on the project website. The project website is located at: [www.madsewer.org/lbmci](http://www.madsewer.org/lbmci)



Madison Metropolitan  
Sewerage District

## Lower Badger Mill Creek Interceptor Phase 6 Proposed Route

0 200 400  
Feet

Sources: Esri, Airbus DS, USGS, NOAA, NASA, CGLAR, N. Robinson, MGLAS, NLS,  
OS, MMA, Geodatasysteme, Rijkswaterstaat, GSA, Geoland, FEMA, Intermap  
and the GIS user community







