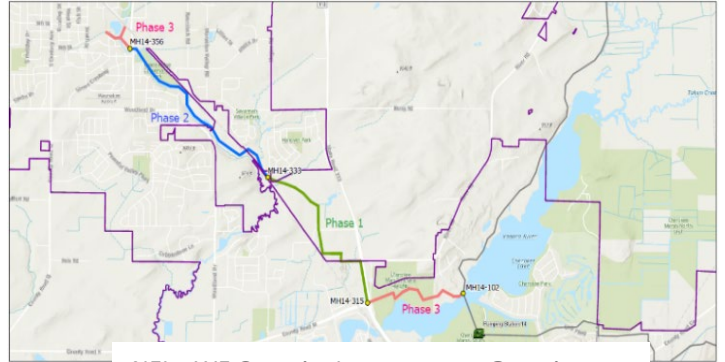


## Northeast Interceptor (NEI) Waunakee Extension Capacity Improvements Phase 1 Project

**Construction Update: 5/08/2025**

### **BACKGROUND:**

- MMSD's NEI Waunakee Extension Capacity Improvement Projects will provide additional capacity for the growing areas of Dane, Waunakee and Westport. Phase 1 provides relief and replacement sewers from the Yahara Heights County Park to the south end of the Savannah Village Subdivision.
- [Phase 1 Location and Route.](#)



NEI – WE Capacity Improvement Overview



STH 113 Bore

### **WORK:**

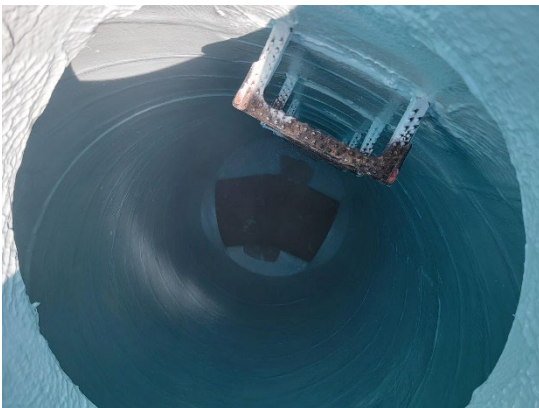
#### **- [Construction Progress and Location Map](#)**

#### **- Current Work:**

- Manhole and interceptor pipe placement at STH 113/Kennedy Drive Intersection
- Kennedy Drive road removal and pipe and MH placement
- Dewatering for pipe and manhole placement along Kennedy Drive

#### **- Future Work:**

- River Road Closure – Permanent restoration. Beginning June 16<sup>th</sup>.
- Kennedy Drive road reconstruction
- Final restoration of work areas



Epoxy Manhole Coating



Cast-in-Place MH14-535 Construction

### **TRAFFIC IMPACTS:**

- **STH 113:** Traffic Restrictions are currently in place:
  - On going NB STH 113 shoulder closures
  - Daily NB STH 113 outside lane closures from 7am to 4pm (when work requires)
- **River Road @ STH 113:**
  - Permanent Restoration Closure – *Summer of 2025*
    - *Scheduled to begin Monday, June 16<sup>th</sup> for up to 2 weeks*
    - *Detour Route (see figure below):*
      - *STH 113 to River Rd: STH 113 to Bong Rd (east) to River Rd*
      - *River Rd to STH 113: River Rd to Bong Rd (west) to STH 113*
- **Kennedy Drive:** – *Currently closed with ongoing work. Restoration/paving planned for mid to late summer*

## River Road Closure Detour Route

