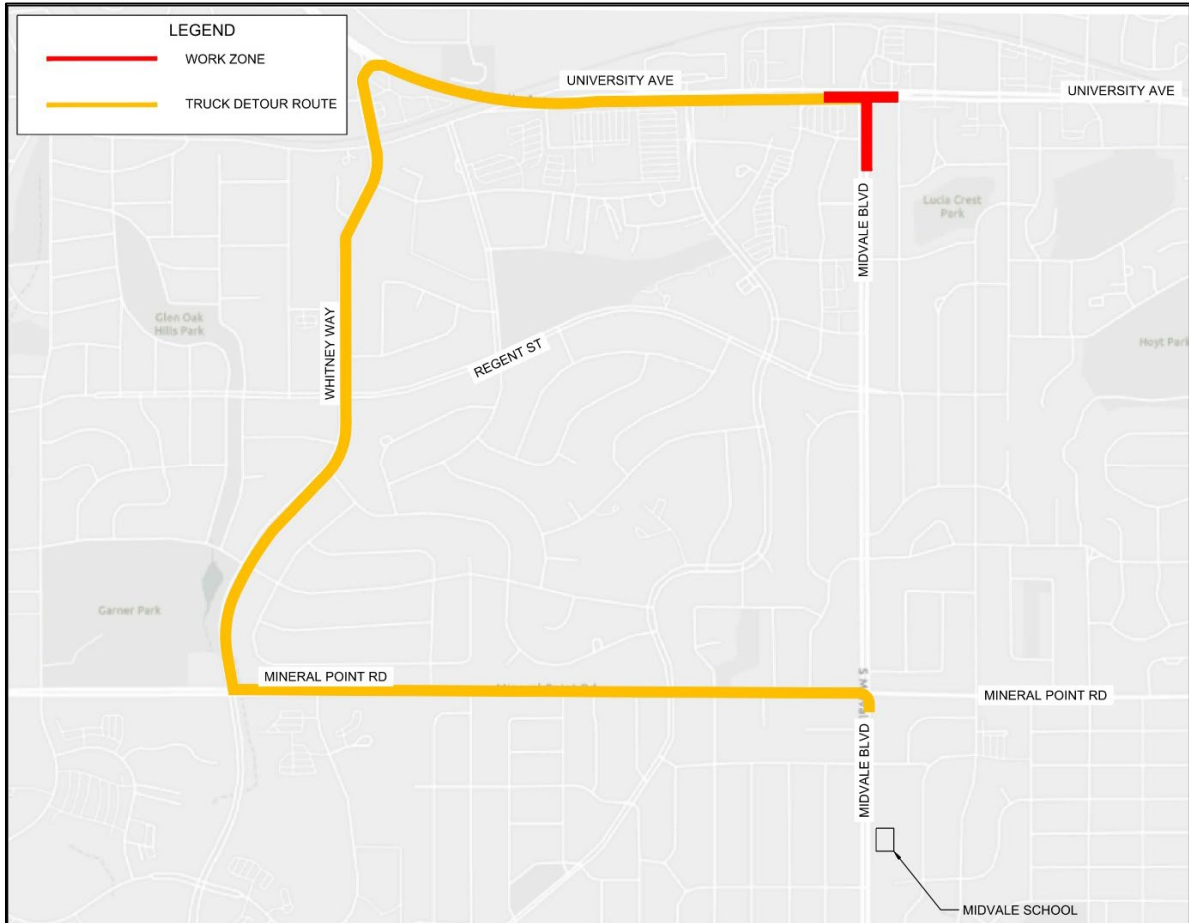


# TRUCK DETOUR

**Effective ~7pm – 8am during select weeks  
from May – August 2025.**

**Associated with the West Interceptor Rehab-Segoe Road to  
Shorewood Boulevard Project**



Truck Traffic Change	Streets Impacted
Restricted Movements	Turns onto Westbound University Avenue and thru movements to Rose Ct. from Northbound Midvale Boulevard
Detours on	Mineral Point Road to N. Whitney Way to University Avenue (City Truck Route)

Learn more about the project and sign up for updates at  
[www.madsewer.org/segoe-shorewood](http://www.madsewer.org/segoe-shorewood).