

Capital Projects Update

April 24, 2025

Lisa Coleman, Director of Engineering

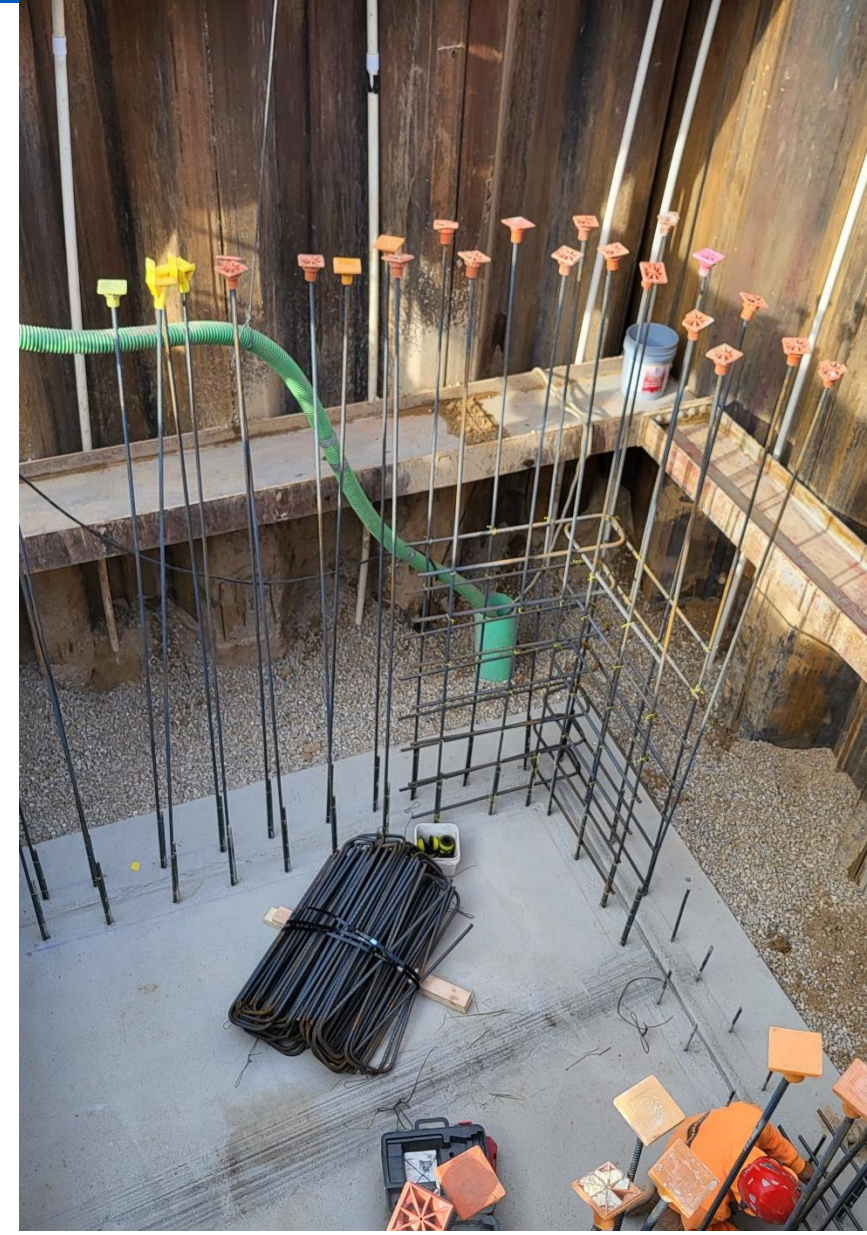
Madison Metropolitan Sewerage District



Preview

Overview of Projects in Planning/Design/Construction

- 2025: bids to date + projects completed
- Project highlights



Planning

Treatment Plant

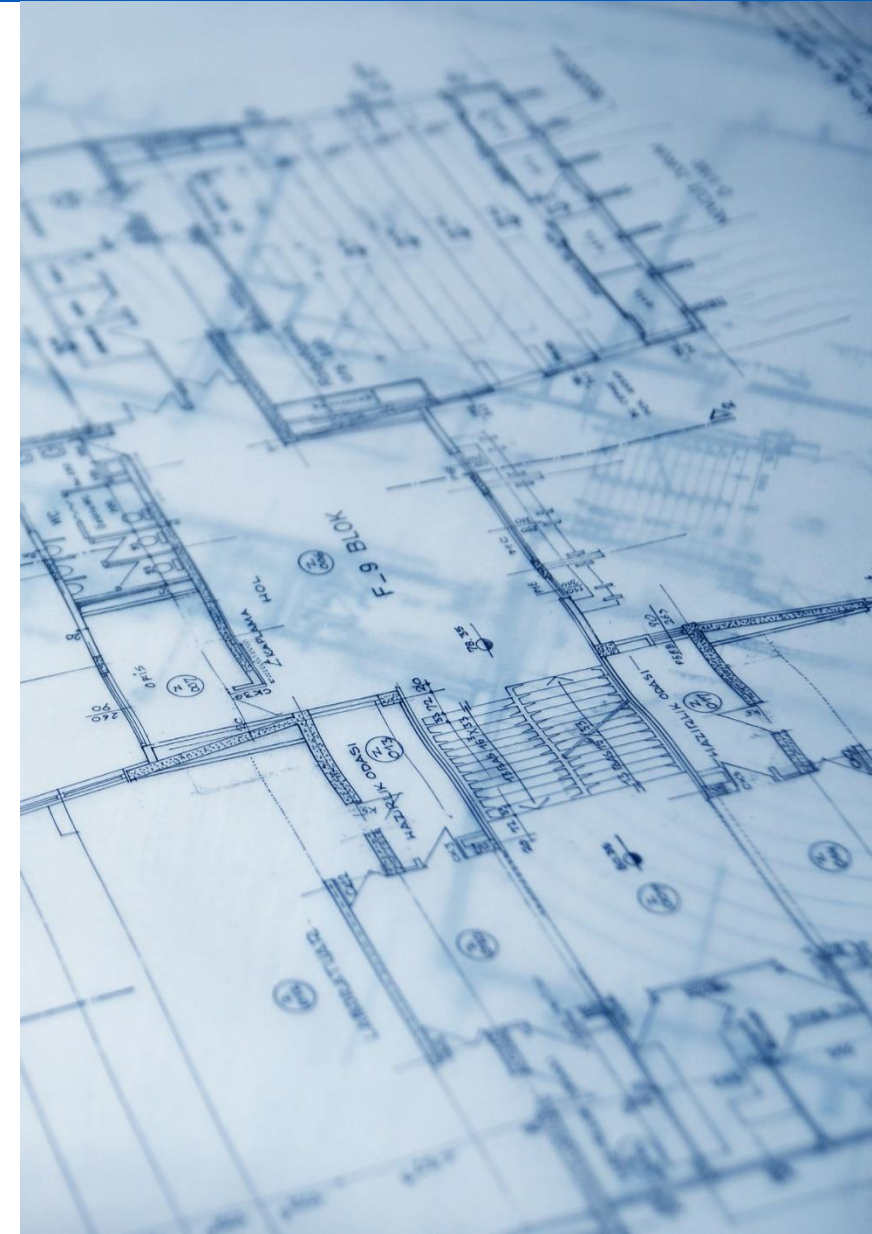
- Heat and Power Improvements (Facility Plan)
- Biosolids Facility Plan

Interceptors

- WI Rehab- Babcock to Dayton Street (C2027)
- WI Rehab-Farley to Marshall (C2027)
- West Interceptor on Regent St (Park to E. Campus Mall) (C2028)

Pumping Stations & Force Mains

- Crosstown Force Main Air Release Valve Saddle Tap Replacements (C2026)



In design

Treatment Plant

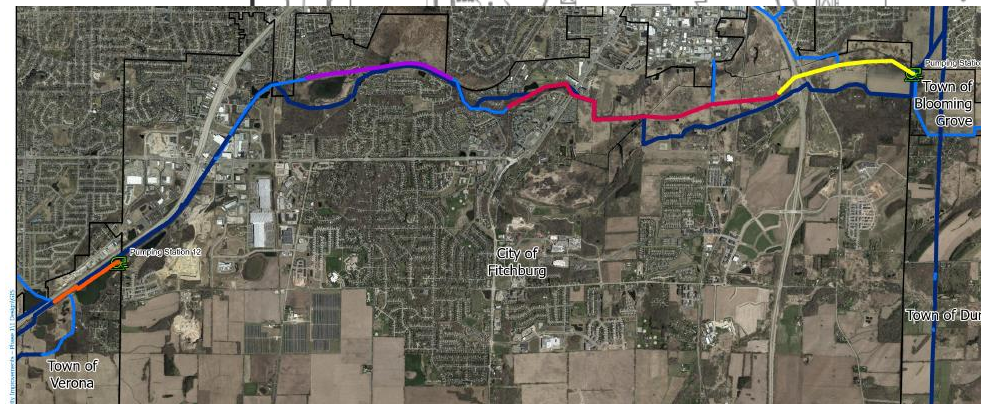
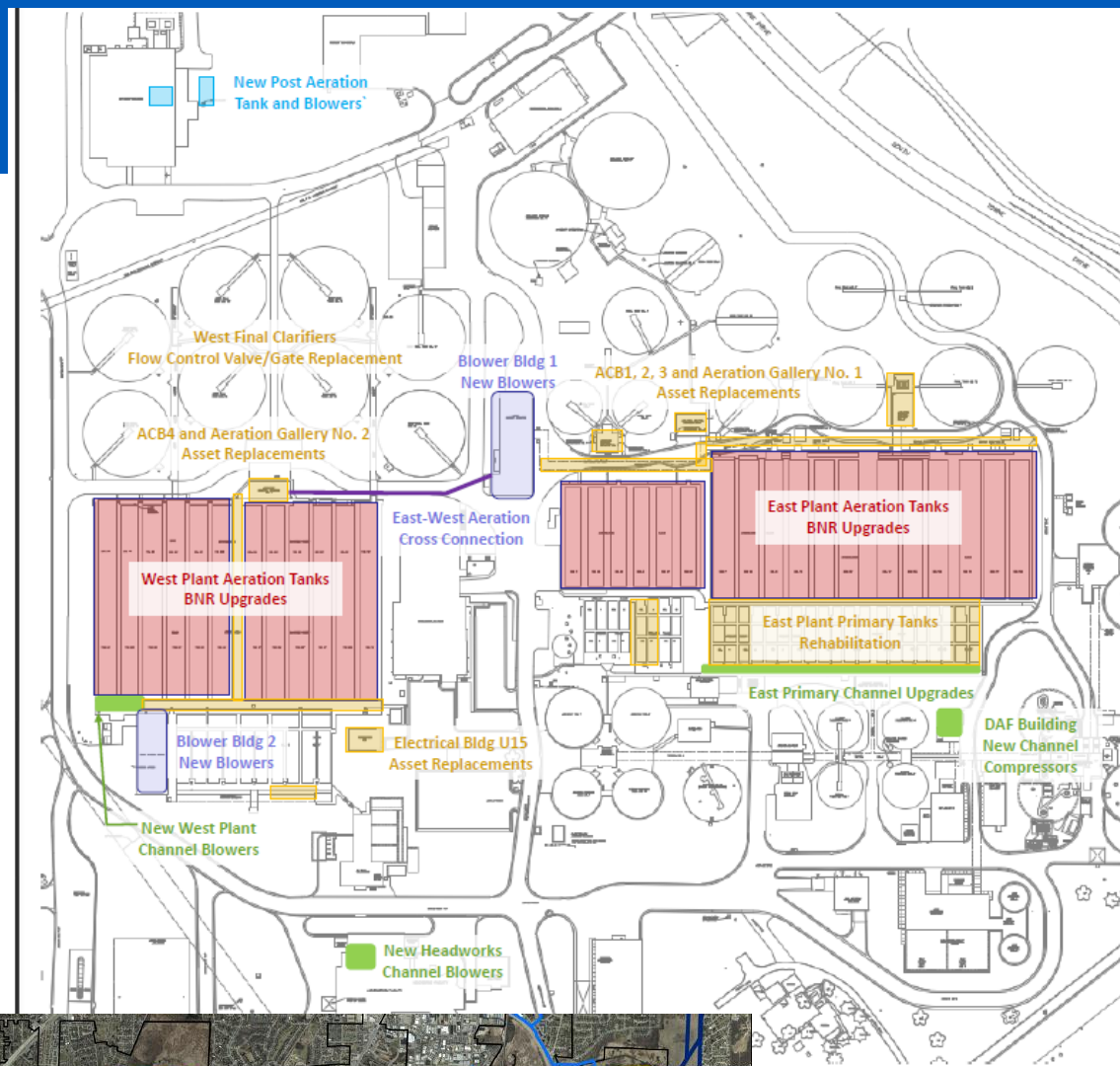
- Liquid Processing Phase 2 (bundled...)
- Lagoon Dike Improvements
- Dryer and Seeding Modifications
- W4 System Improvements

Interceptors

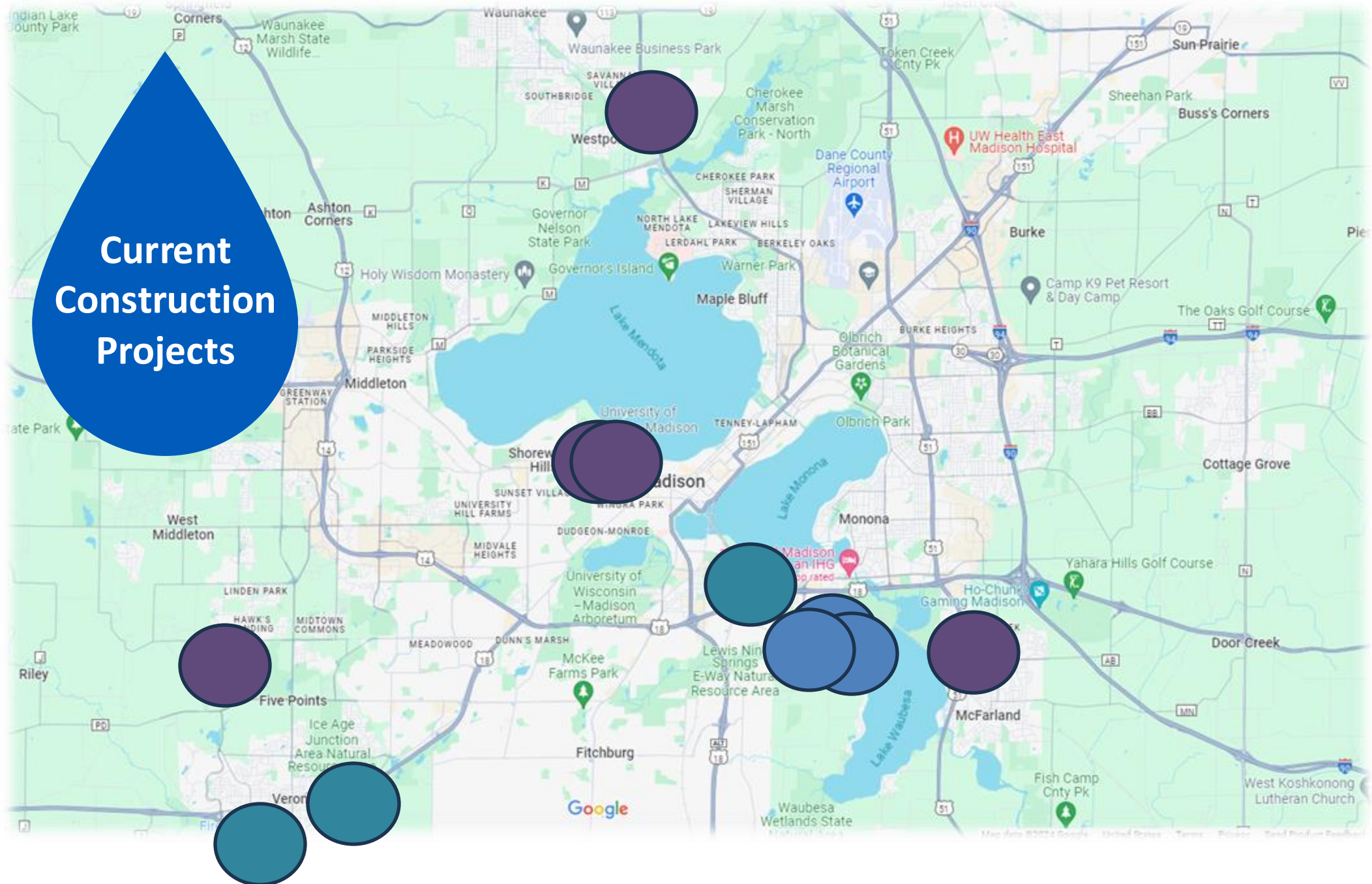
- Manhole Rehabilitation on Old West Interceptor
- NEI-Truax Extension Rehab – C 2026/2027
- NSVI Capacity Improvements (Phase 1)
- NSVI Capacity Improvements (Phase 2)
- Southeast Interceptor Relocation at Yahara River

Pumping Stations & Force Mains

- Pumping Station Bar Screens
- Pumping Station 10 Force Main



Current Construction Projects



Under construction

Treatment Plant

■ Sludge Thickeners 1 and 2 Drive Replacement

■ Electrical Service Equipment Replacement

■ Flow Splitter Improvements

Interceptors

■ Lower Badger Mill Creek Interceptor – Phase 6 C 2025/2026

■ West Interceptor Rehab - Segoe Road to Shorewood Boulevard

■ NEI – Waunakee Extension Capacity Improvements (Phase 1)

■ Southeast Interceptor Rehabilitation on USH 51(Phase 1)

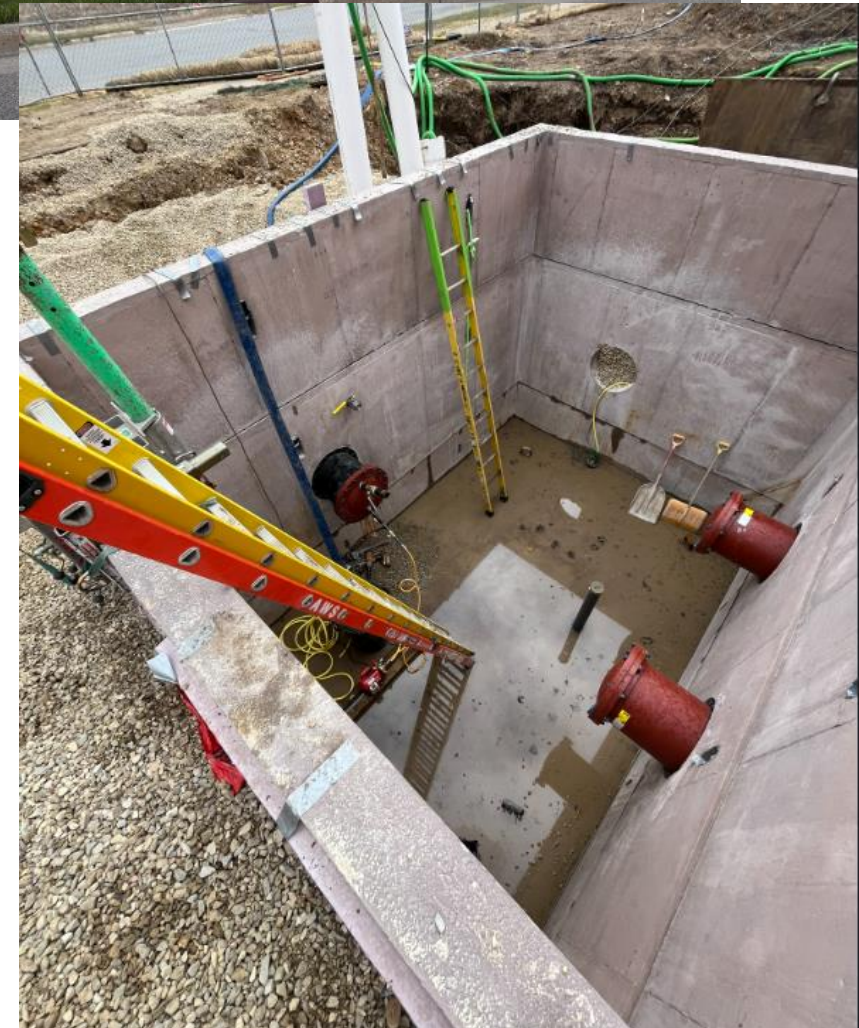
■ West Interceptor Shorewood Relief Ph 3

Pumping Stations and Force Mains

■ Pumping Station 17 Firm Capacity Improvements

■ Pumping Station 17 Force Main Relief Ph 2 - ~pipe complete

■ Pumping Station 4 Rehabilitation



Projects completed in 2025 (so far...)

Treatment Plant

- 2021 Treatment Plant HVAC Improvement Project (Metrogro Pumping Station, Headworks, GBT, DAF)

Interceptors

- None yet

Pumping Stations and Force Mains

- None yet



2025 Bids (so far...)

West Interceptor Rehab – Segoe Road to Shorewood Blvd

- Bid Cost \$895,000 (Visu-Sewer)

Lower Badger Mill Creek Interceptor – Phase 6

- Bid Cost \$3,445,000 (Integrity)



The background image shows a construction site under a clear blue sky. In the foreground, a large, dark pile of excavated earth dominates the left side. To the right, a yellow CAT excavator is positioned, its arm extended. In the background, another excavator is visible, working on a flat area. Several orange and white striped traffic barrels are scattered across the site. A few workers in high-visibility vests are standing near the background excavator. The overall scene is a typical construction or excavation project.

Project Highlights

Madison Metropolitan Sewerage District



Flow Splitter Improvements

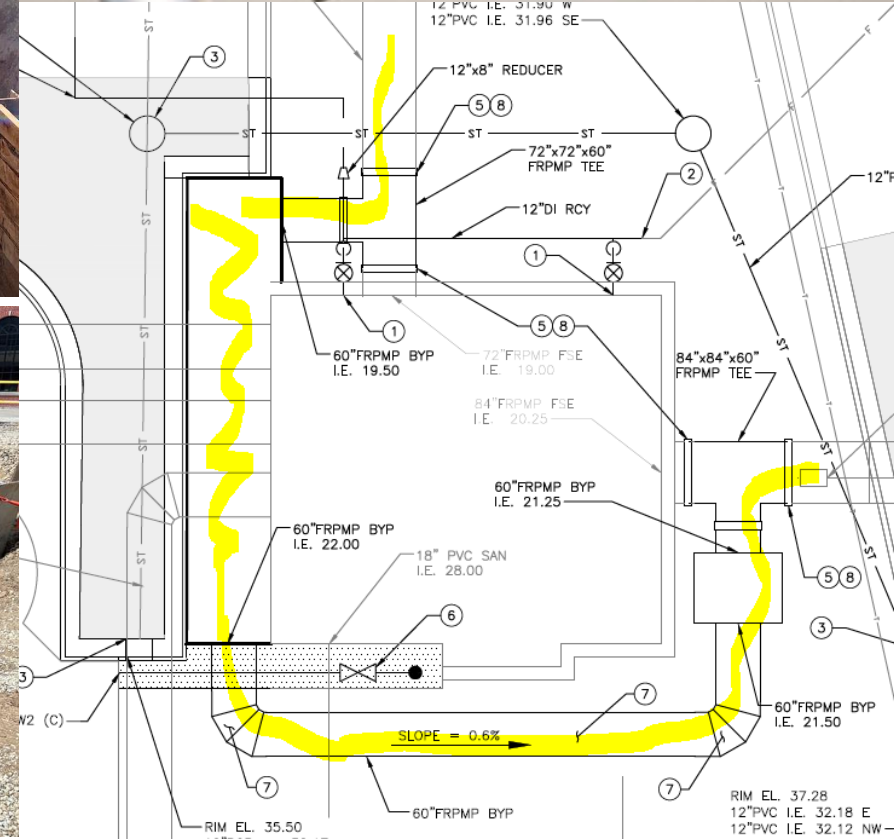
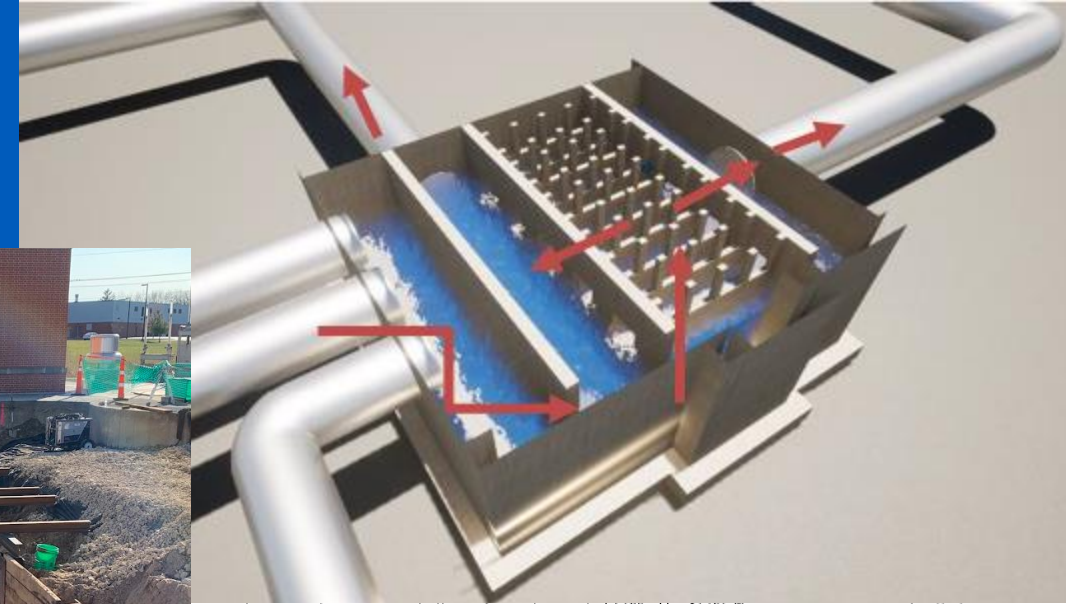
- Onsite work began in March
- Working on permanent bypass structures
- Following bypass structure construction, concrete rehab in ex. structure + replace troughs + rehab frames

Schedule:

- Fall 2025 completion

Upcoming challenges:

- Bypassing to cut out pipes from Headworks and make connections



NEI – Waunakee Extension Cap Imp (Phase 1)

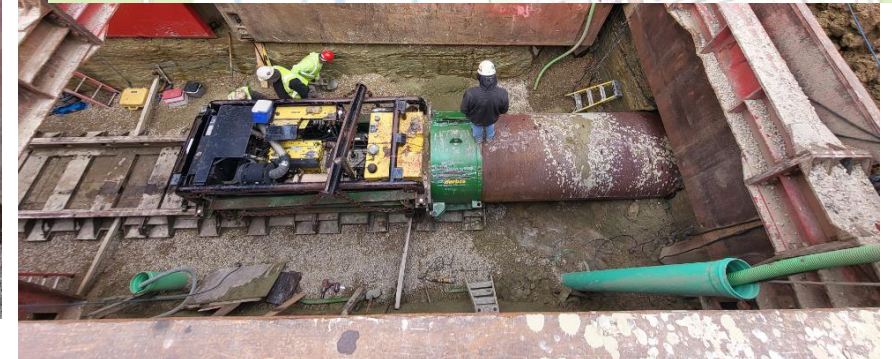
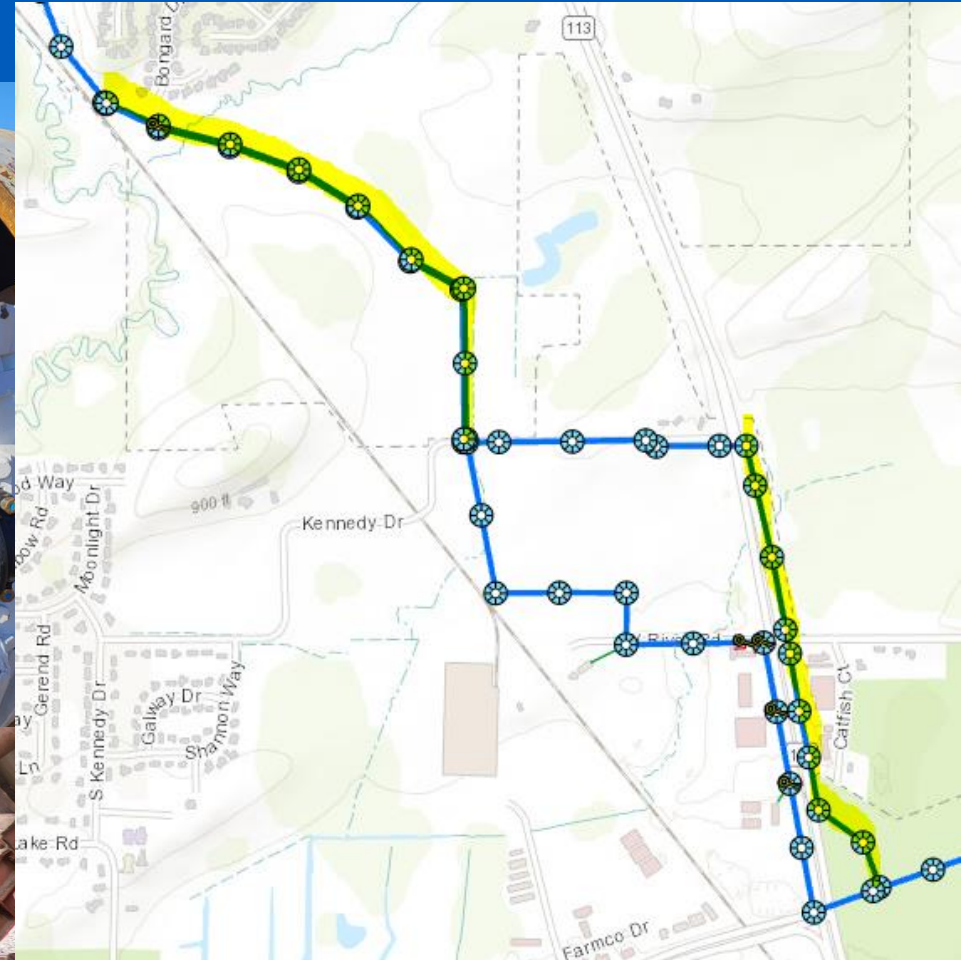
- Bore nearly complete
- Pipe left to install along Kennedy Dr
- Spot replacement of ex pipe East of 113

Schedule:

- Substantial completion 5/29/26
- Completed early? (Fall 2025)

Upcoming challenges:

- Rock excavation along Kennedy Dr

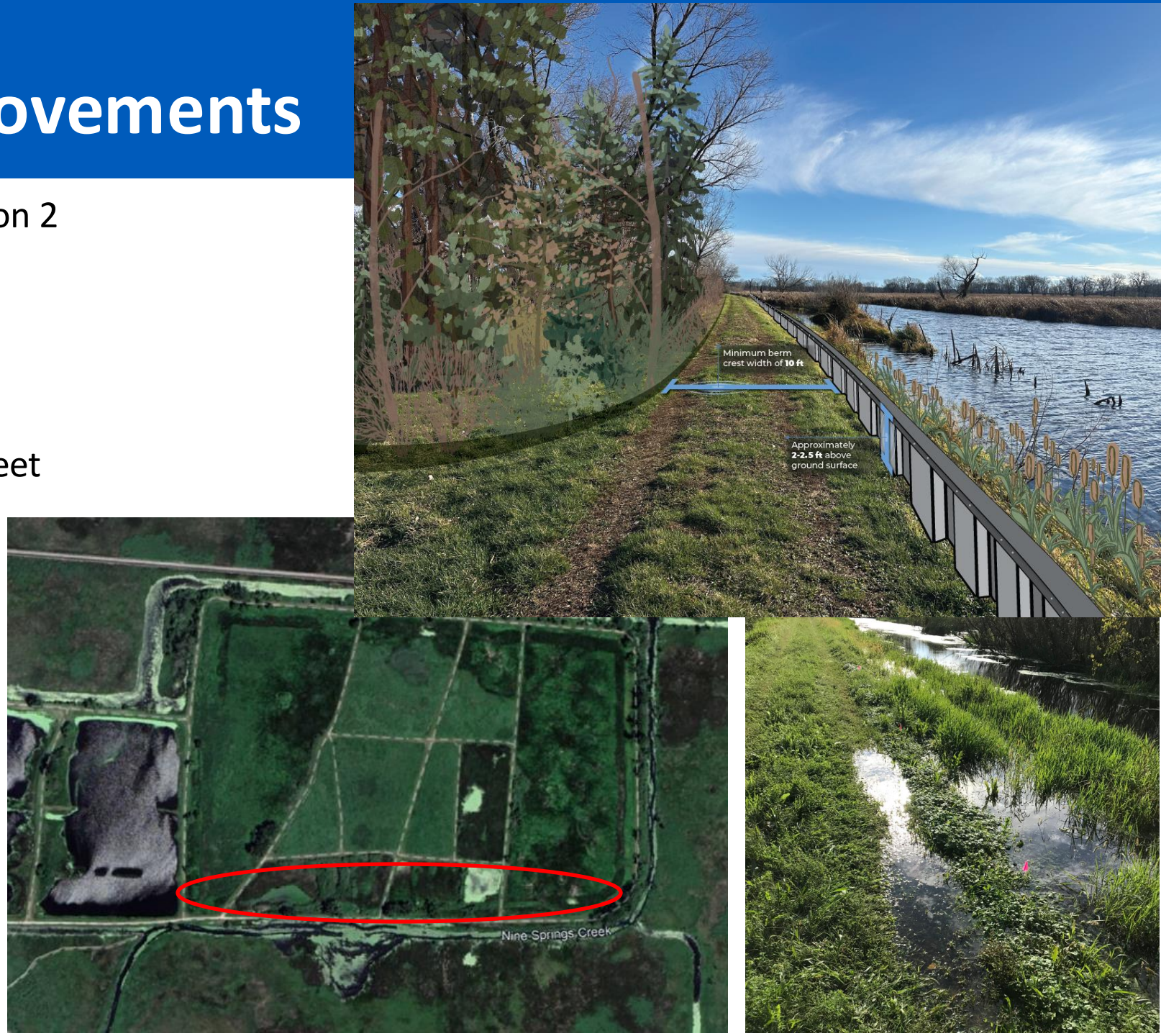


Lagoon Dikes Improvements

- Purpose – flood resiliency for Lagoon 2 to prevent overtopping from Nine Springs Creek
- Geotechnical, permitting, and constructability challenges
- Selected design: – S. berm: vinyl sheet pile wall
N, E berms soil/woodchip mix

Schedule:

- In design/permitting
- Ready to bid early 2026



WI Shorewood Relief Ph 3

- Last phase of capacity upgrade project
- Last piece across Highland/on/off ramps to Campus Dr. starting soon
- Traffic control/detours
- Heavy coordination with stakeholders
City of Madison/UW Hospital/VA/Metro

Schedule:

- Wrapping up Shorewood piece
- Highland- starting in May, complete in Sept.

Madison Metropolitan
Sewerage District

COMMISSION CAREERS CONTACT Select Language

Who We Are What We Do Pollution Prevention Do Business With Us News & Resources

Project overview

Madison Metropolitan Sewerage District's West Intercepting System is a complex network of sewers that provides service to the near west side of Madison, Middleton, Shorewood Hills and Westport. The original West Interceptor was built in 1916, and there have been several extensions, reliefs and replacements added to the system over the years. The existing interceptor needs to be replaced to increase capacity, which ensures the safe and reliable conveyance of wastewater while protecting public health and the environment.

Project work for the West Intercepting System has been taking place over multiple phases. You can learn more about other portions of the project and the project history on the [West Interceptor-Shorewood Relief \(Phases 1-3\)](#) page and the [West Interceptor Rehab-Segoe Road to Shorewood Boulevard](#) page.

HIGHLAND SECTION

Construction of the West Interceptor-Shorewood Relief (Highland Section) in Highland Avenue and in the Campus Drive on and off ramps was originally planned for 2023 and has been

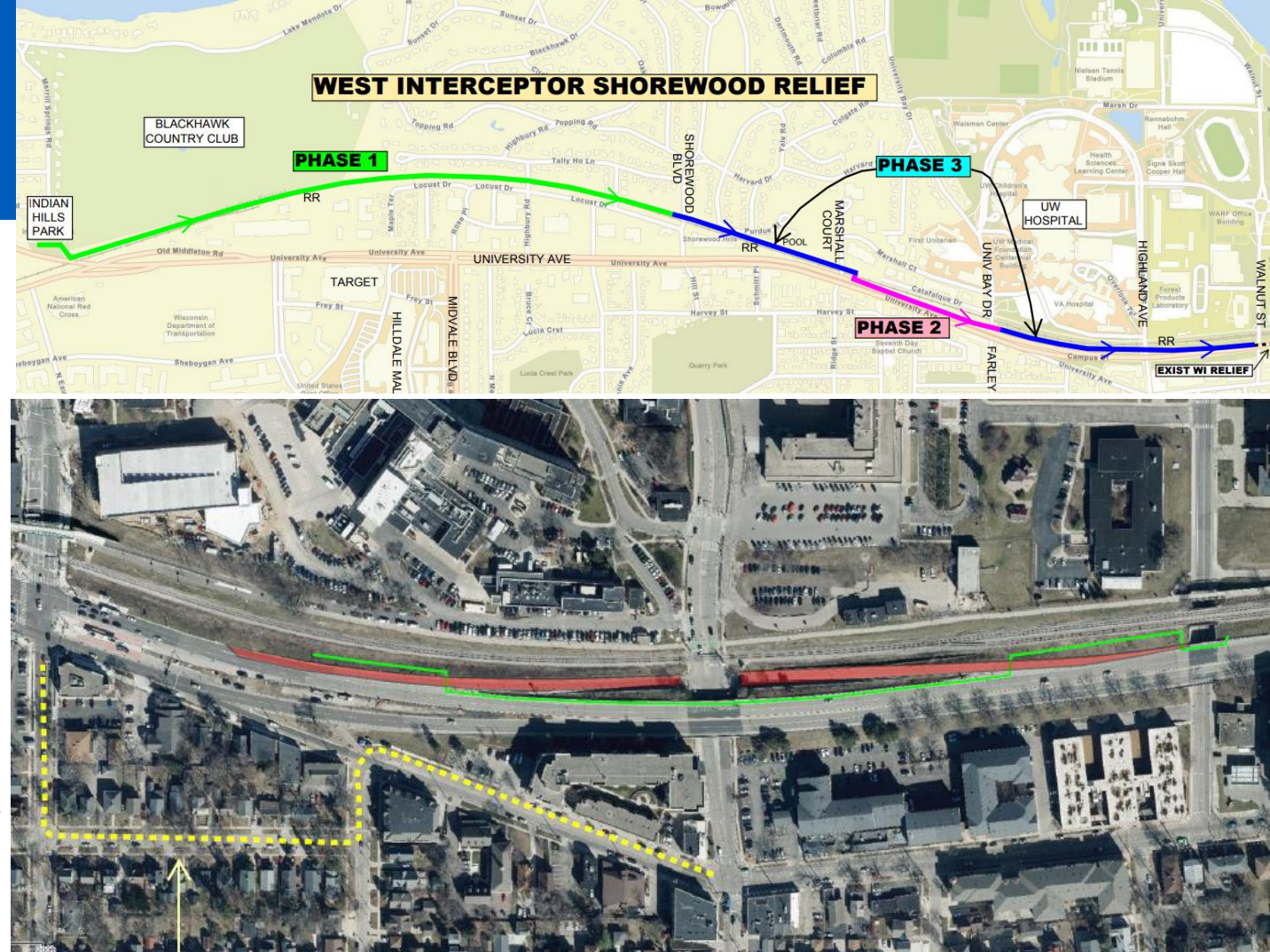
SIGN UP FOR PROJECT UPDATES

Send me an email when this page has been updated.

Email Address*

☐ By creating a subscription, you permit us to store the data you have provided above, in accordance with local laws, and opt into receiving emails that match the information requested. Further details can be found in our [Privacy Policy](#).*

Create Subscription



BUS DETOUR WHILE
ON-RAMP IS CLOSED

Questions?

Madison Metropolitan
Sewerage District

Madison Metropolitan Sewerage District

Madison Metropolitan Sewerage District