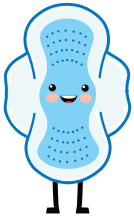


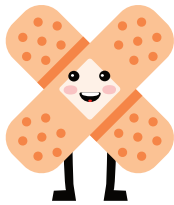
Is It Flushable?

Putting garbage down drains and toilets clogs pipes and creates messy sewer backups. Even items labeled “flushable” shouldn’t be flushed. Only flush toilet paper and stuff that’s naturally from your body – everything else belongs in the trash!

THROW IN TRASH:



tampons,
condoms,
sanitary napkins



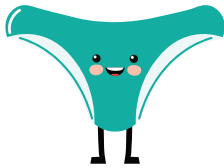
bandages,
dressings



dental floss,
string, thread



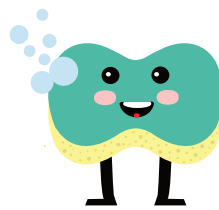
baby wipes,
moist wipes,
paper towels



underwear,
washcloths,
towels, rags



wrappers,
plastic bags

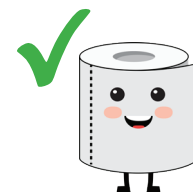


toilet bowl
scrub pads,
sponges



pet waste, dog
poop, cat feces,
fish gravel

FLUSH ONLY THESE:



Madison Metropolitan
Sewerage District

 madsewer.org/flushables

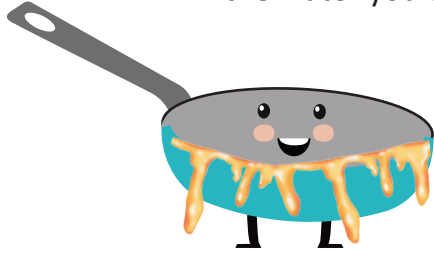
 (608) 222-1201

 pp@madsewer.org



Disposing of Special Waste?

Properly dispose of your medications, hazardous items and special waste. Because anything you put in the water you use is eventually returned to the environment.



Fat, Oil and Grease (FOG)

FOG from meat or dairy has a high risk of clogging pipes. To dispose of FOG:

- Cool to harden before tossing
- Scrape solid FOG into trash
- Can it into a container, then toss
- Wipe with paper towels and put in trash



Medicines

Take pills, vitamins, medications or pharmaceutical waste in a sealed plastic bag to a MedDrop location.

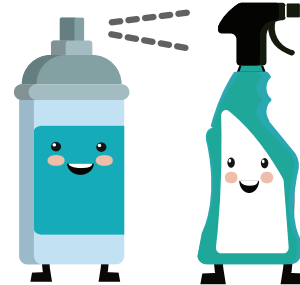
[SaferCommunity.net/MedDrop](https://www.safercommunity.net/MedDrop)



Paint and Varnishes

Latex or acrylic paint can be dried completely and trashed. Oil-based paints, varnishes and paint thinner belongs at Dane County Clean Sweep.

link.madsewer.org/CleanSweep



Household Waste

Chemicals, cleaners, pesticides, electronics, and more can be hazardous to the environment. Do not put these items in the trash or down drains. Instead, bring items to Dane County Clean Sweep.

link.madsewer.org/CleanSweep



Light Bulbs


Search Dane County's disposal directory for disposing of incandescent or fluorescent light bulbs.

link.madsewer.org/DCwaste

For more information on safely disposing of waste, contact your local municipality or visit [MadSewer.org](https://www.madsewer.org).

Madison Metropolitan
Sewerage District

 [madsewer.org/flushables](https://www.madsewer.org/flushables)

 (608) 222-1201

 pp@madsewer.org

