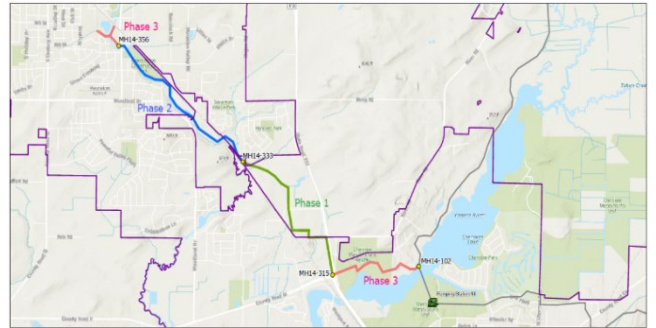


Northeast Interceptor (NEI) Waunakee Extension Capacity Improvements Phase 1 Project

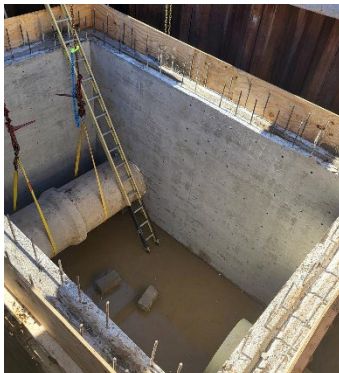
Construction Update: 11/08/2024

BACKGROUND:

- MMSD's NEI Waunakee Extension Capacity Improvement Projects will provide additional capacity for the growing areas of Dane, Waunakee and Westport. Phase 1 is providing relief and replacement sewers from the Yahara Heights County Park to the south end of the Savannah Village Subdivision.
- [Phase 1 Location and Route.](#)



NEI – WE Capacity Improvement Overview



Dog Park Connection Manhole

WORK:

- [Construction Progress and Location Map](#)

- Current Work:

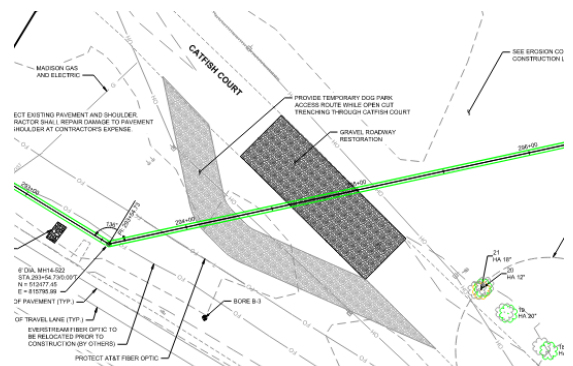
- o Manhole connection at Dog Park
- o Pipe placement at the Dog Park working north.
- o Dewatering, clearing and erosion control

- Future Work:

- o Second pipe crew to begin work at Kennedy Drive and work to the north.
- o Setting up dewatering, erosion control, and clearing work area.

TRAFFIC IMPACTS:

- **STH 113:** Traffic Restrictions are currently in place:
 - o On going NB STH 113 shoulder closures
 - o Daily NB STH 113 outside lane closures from 7am to 4pm (when work requires)
- **Catfish Court:** Temp Access to Dog Park during pipe crossing – *Anticipated Mid-End November*
- **River Road @ STH 113:**
 - o Pipe Crossing Closure – *Anticipated Early December for 1 night or weekend day*
 - o Permanent Restoration Closure – *Summer of 2025*
- **Kennedy Drive:** – *Spring of 2025 for up to 4 months*



Catfish Court Temp Access