



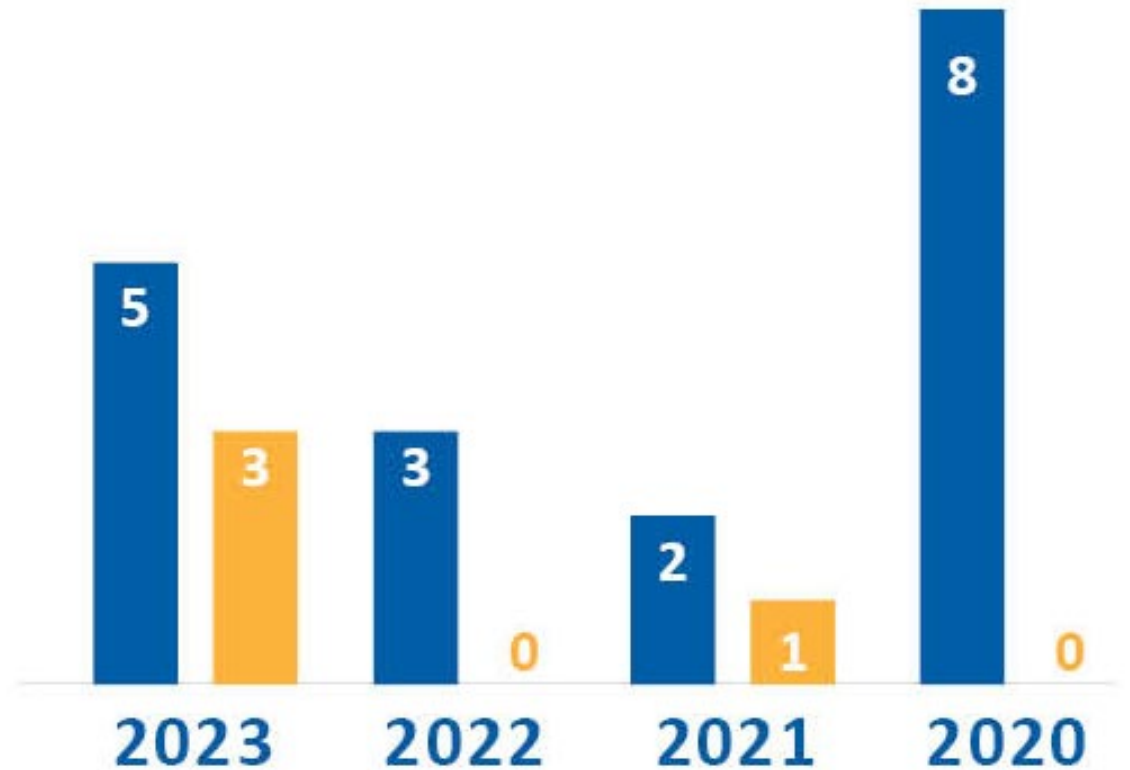
Pumping Station 15 Drain Value After- Action Review

April 25, 2024

Performance Indicator

Performance areas:

- Regulatory compliance
- Infrastructure reliability



*No SSOs in 2022 and 2020

KEY

Treatment Facility Overflows (TFOs)

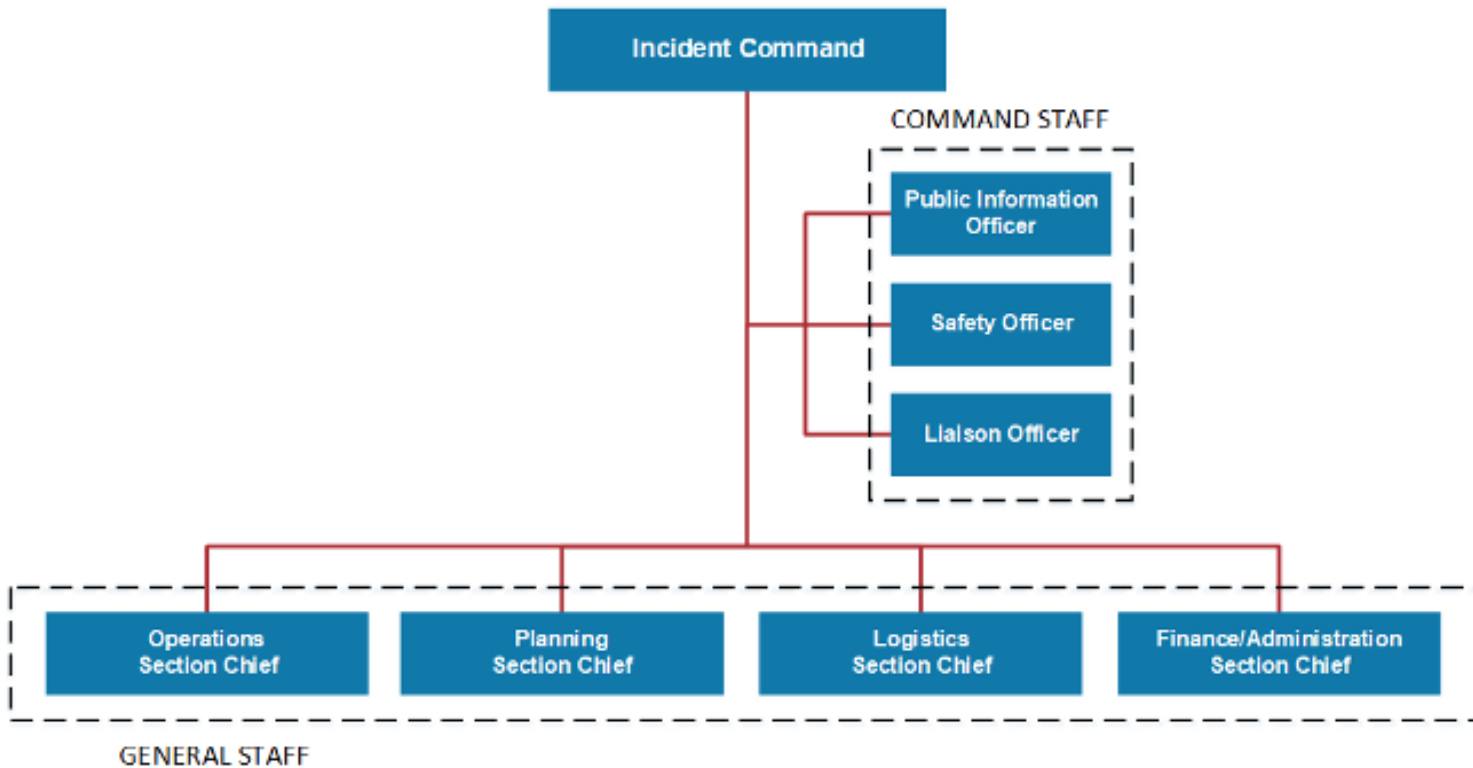
Sanitary Sewer Overflows (SSOs)



Not all SSOs
created
equal



FEMA Incident Command System (ICS)



Response overview



After- action review



- Tracking values with Asset ID - update WAM/GIS Asset Standards
- Able to better track location, age, condition, work history.

Train for emergencies
Things we might need to bring. Have stuff ready to go.
Having a more organized response to a scen.

More Pre-Planning ~~and~~ Meetings
With everyone involved so we can make sure we are ready for emergency or other issues that pop up.

Incident

Immediate Response (2 hours min)

On-site

Plan
Make all the tools we need in one spot

Have tools in central spots (wrenches, etc) so everyone can see them and they are easily secured or removed from area of people involved

3) Update event response plan for P&S with lead we learned in it to not cause backup so that we know next time.

1) Have a quick response trailer dedicated to emergency only. Things inside: Paper, Buckets, sand bags, discharge hose, bucket hose, generator, lights, fire lights, hoses, Bar codes, P&S card, 2 x 4's, misc tools and hardware, etc.
(Needs to roll in about 15 min)

Educate all on command center operations and how tasks are delegated through the command center
(Less confusion)

Exclude move work groups
Involve in planning before start of project.
To prevent a potential SSD.

or data have I/O of what you are going to repair or replace.

have 2 extra pps online with a backup part or show by with a 7 day like this note in case of failure.
For system finding

1) Have equipment ready to go on trailer just for emergencies.
2) Not having those cables, equipment being used.

On-site:

Storage of certain equipment can not be all over the plant where faster response time

Recognize that all equipment needs to operate properly
avoid less chance of problems

Have emergency area in the plant for all groups to know where parts and tools are.
Factor respect for.

Have a sit down, round table type planning session to lay out step by step what we need to do, how we will do it and who will do it. For both the job and on call as an emergency

have a meeting with direct on site to go over anything that was missed to prevent failure

Team trainings/drills

Recommended Action:
Have a folder easily accessible in operator control room & incident command center that includes emergency contacts from all, roles that need to be filled, and a template of activities to follow

for staff feel confident independent in the field, know how to handle tough situations

Create a "to go" binder with CMOM, ERP, emergency checklists to ensure consistent response and don't miss steps.

More serious incident scenarios - really test our procedures so we find problems & fix them

Incident Command:

1) Ask your question and develop a solution to solving the problem. In writing a highly organized paper.
- know all consequences
- know how the work will be performed in the future

Formulate a team - process to review a plan these types of maintenance activities (any and all needed)
1) Define the team - review a clear description of what the team is to do and who is to do it
2) Assign a leader or assign a team leader
3) Assign a team member to be the team leader
4) Assign a team member to be the team leader

Announce a check point of center or site. Who gives updates?

Two-way radio so we are not overwhelmed in a second

4) Clarity on who needs to be involved in emergency situations so that they can engage else understand

Incident Command

Remember a check point of center or site. Who gives updates?

Opportunities for improvement centered around:

- Training
- Project pre-planning (Emergency prevention)
- Emergency response preparation & planning





(and less veggie pizza)

Madison Metropolitan Sewerage District





Madison Metropolitan
Sewerage District

Thank you

