

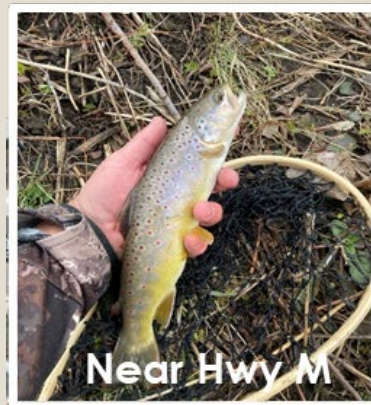
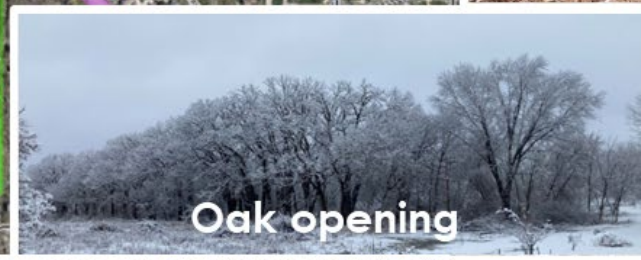
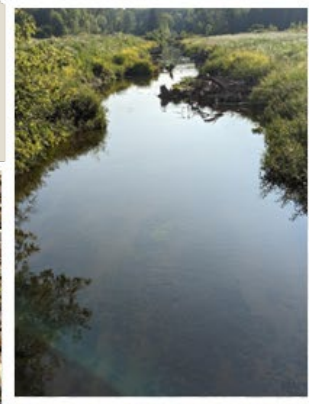
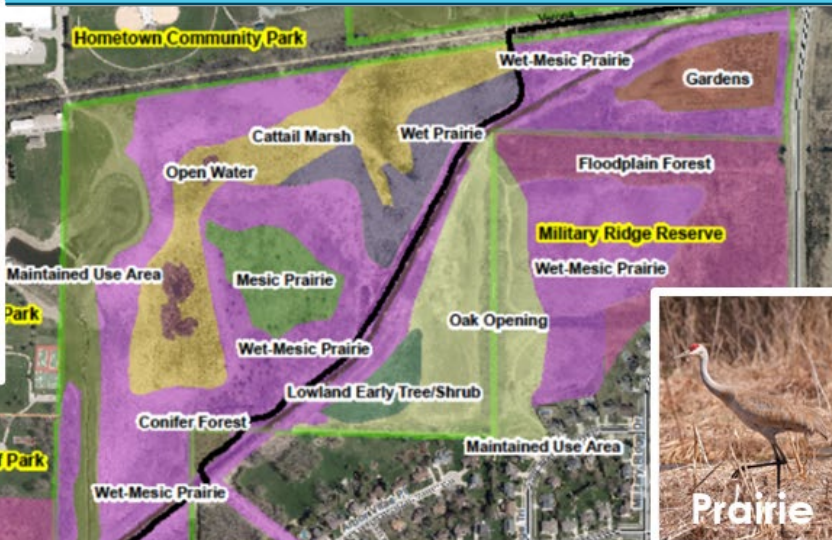


# Friends Badger Mill Creek Environmental Corridor

BMC Stakeholder Meeting  
17 April 2024



# Friends BMCEC... *Our Site*

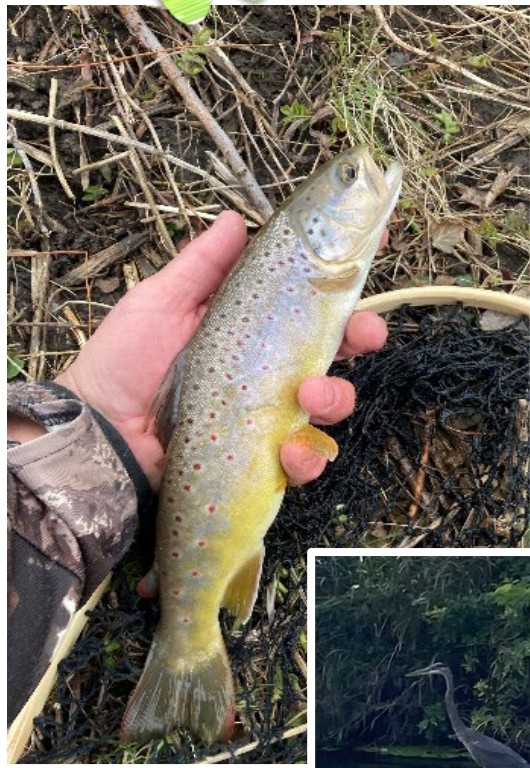




# Why do we care? ... *Protecting wildlife habitat*

## Our Mission

To protect and sustain natural resources within the Badger Mill Creek Environmental Corridor by participating in the restoration and conservation of natural plant and animal communities, and geologic/hydrologic features; and by promoting environmental stewardship through connecting people with nature and each other.





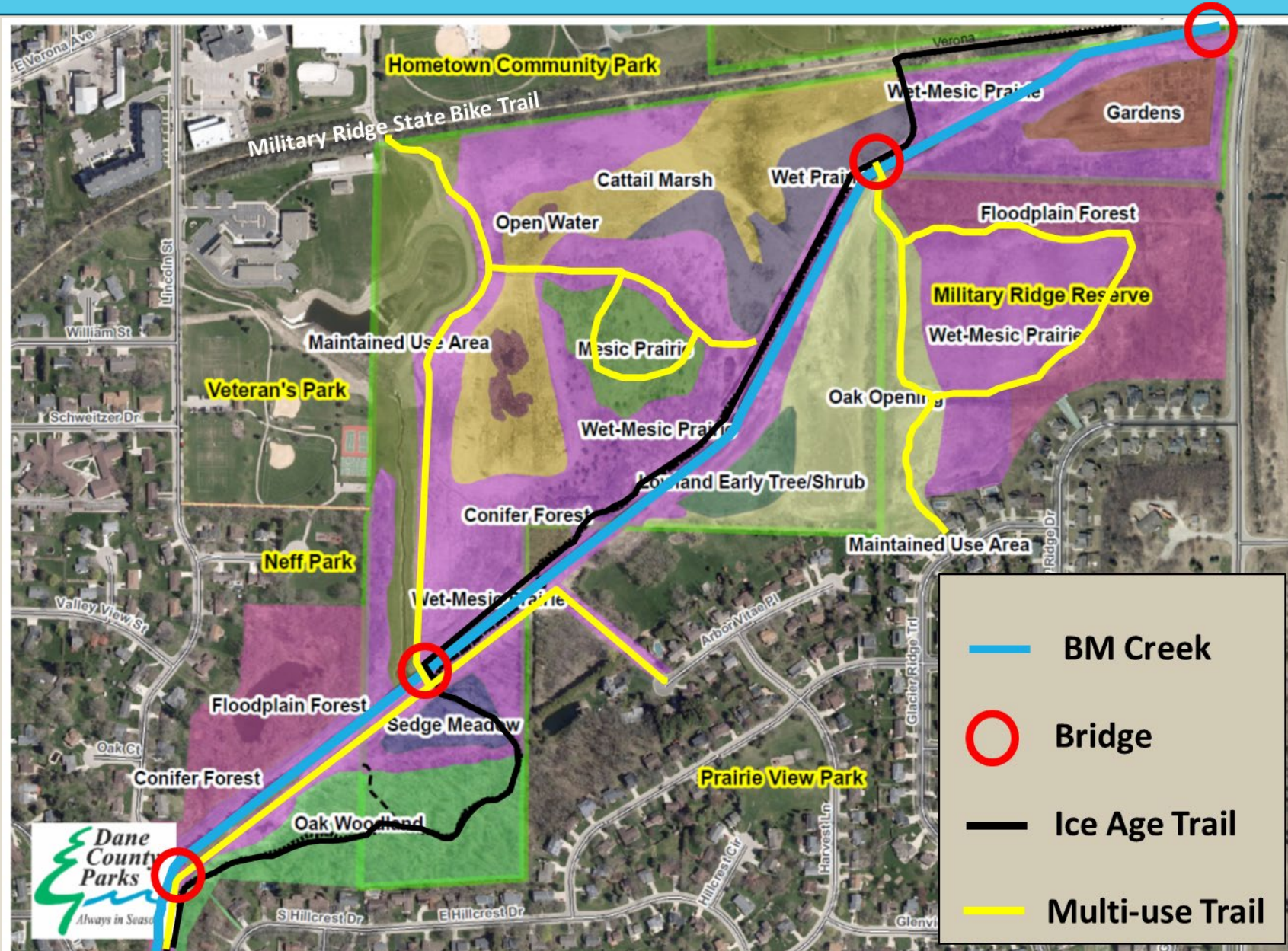
# Why do we care? ... *Habitat restoration, some current projects*

- Clearing invasive shrubs and trees in the oak opening
- Site preparation of 5 acre fallow parcel. Native planting planned for fall of 2024
- Invasive weed control in the sedge meadow
- Clearing brush and trees along the Ice Age Trail for future native planting.



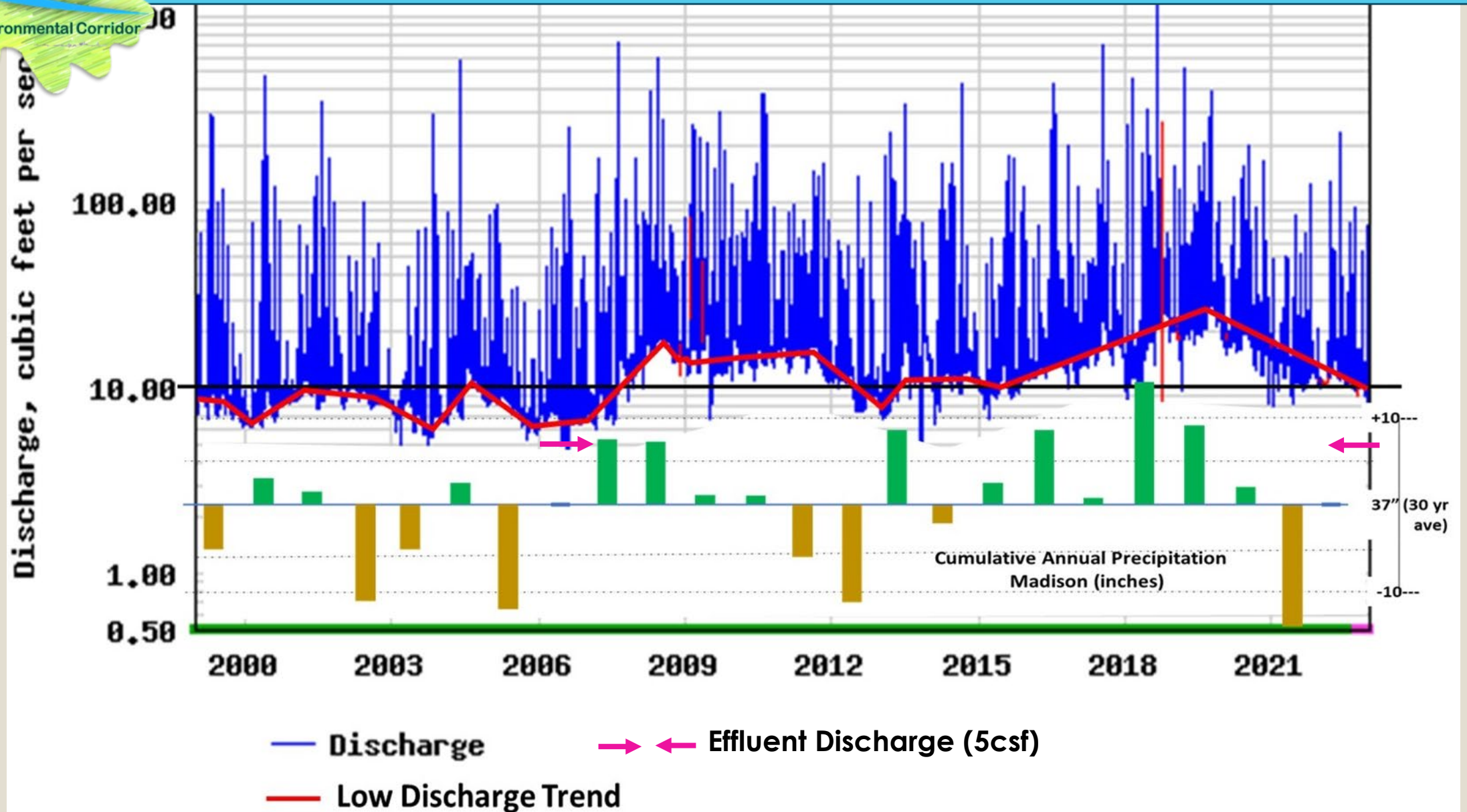


# Why do we care? ... Connecting people to nature



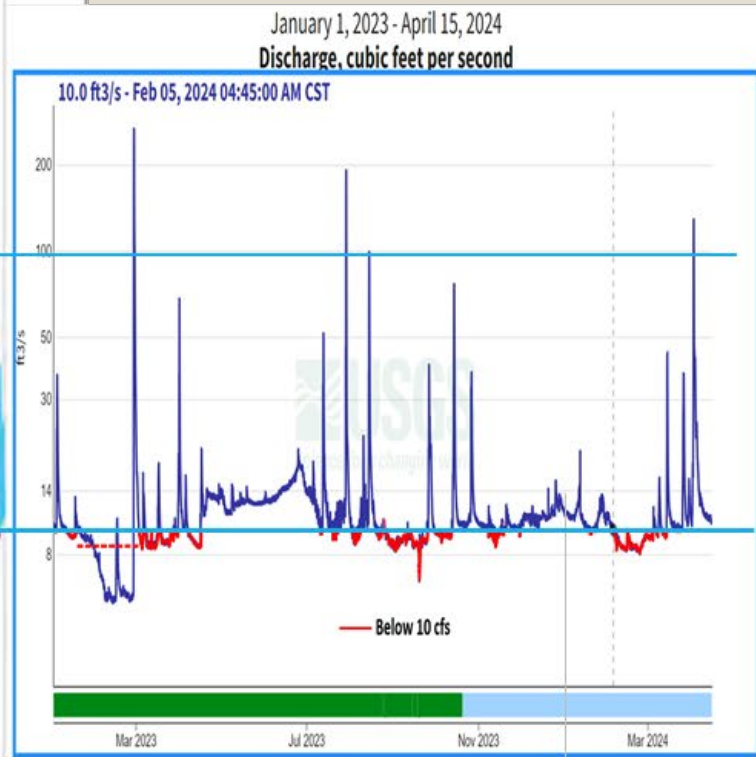
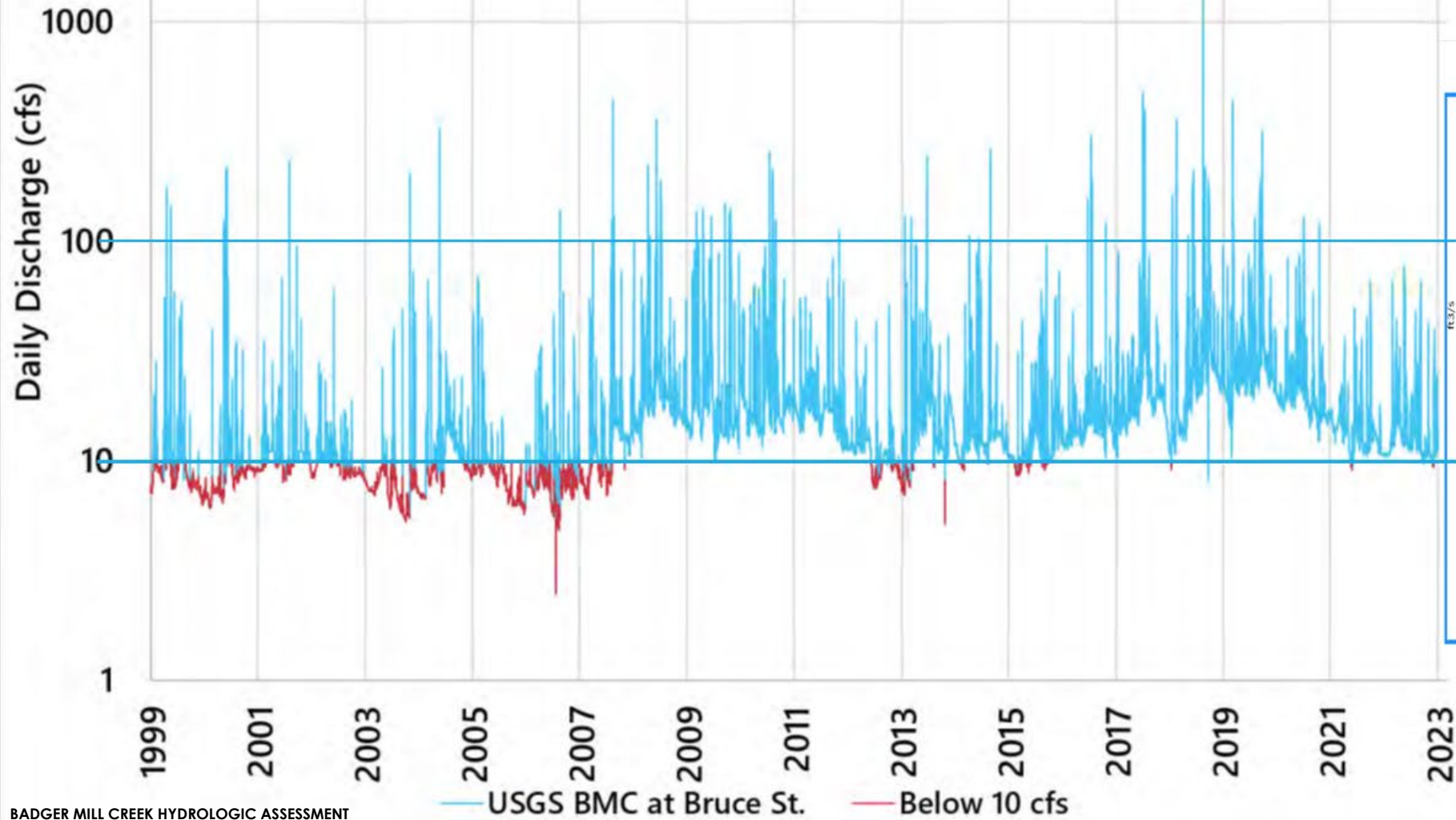


# Why do we care? ... Stream health & resiliency to climate change





# Why do we care? ... Stream health & resiliency to climate change





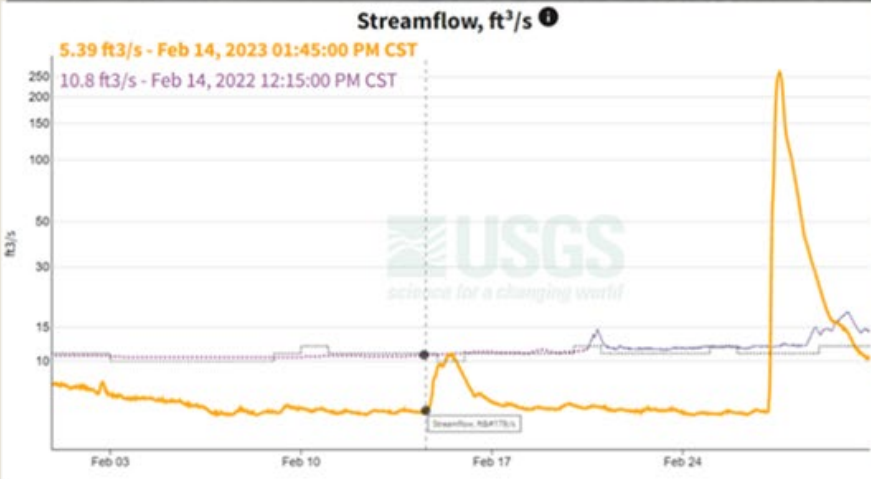
# Why do we care? ... Stream health & resiliency to climate change



Photos taken when discharge was 5 cfs and effluent discharge (also ~5 cfs) was stopped.

Discharge dropped to 8 cfs during the dry summer of 2023 and in early winter of 2024.

Imagine the stream with a 40% reduction from that shown.







## Why do we care? ... *It is important to...*

.....invest in an urban corridor connecting natural areas in an increasingly urban landscape

.....preserve the health of the stream and riparian habitat

.....support the resiliency of the stream to climate change impacts

.....prioritize the health and resiliency of people by connecting them with nature