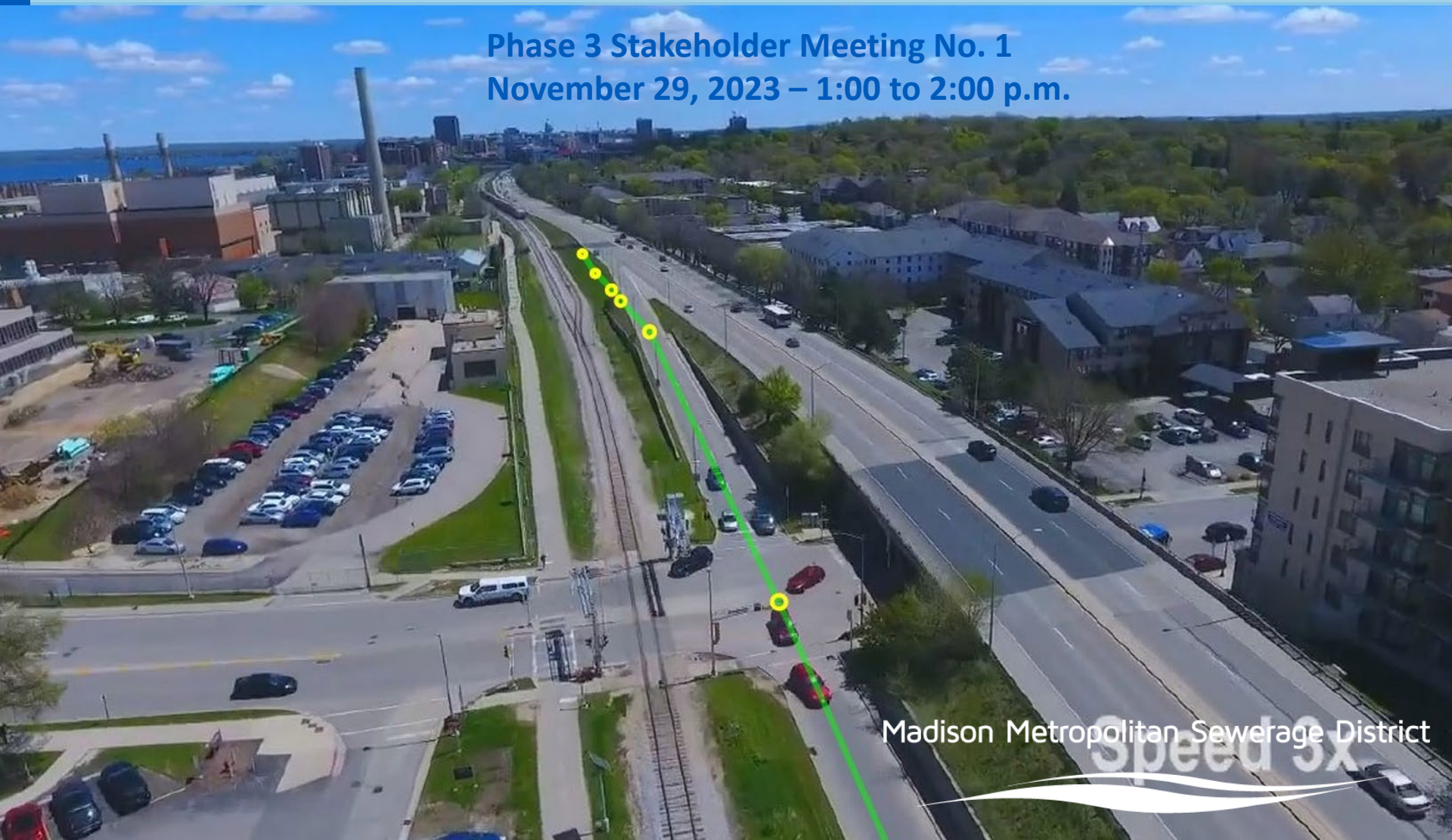


West Interceptor – Shorewood Relief Sewer Project

Phase 3 Stakeholder Meeting No. 1
November 29, 2023 – 1:00 to 2:00 p.m.

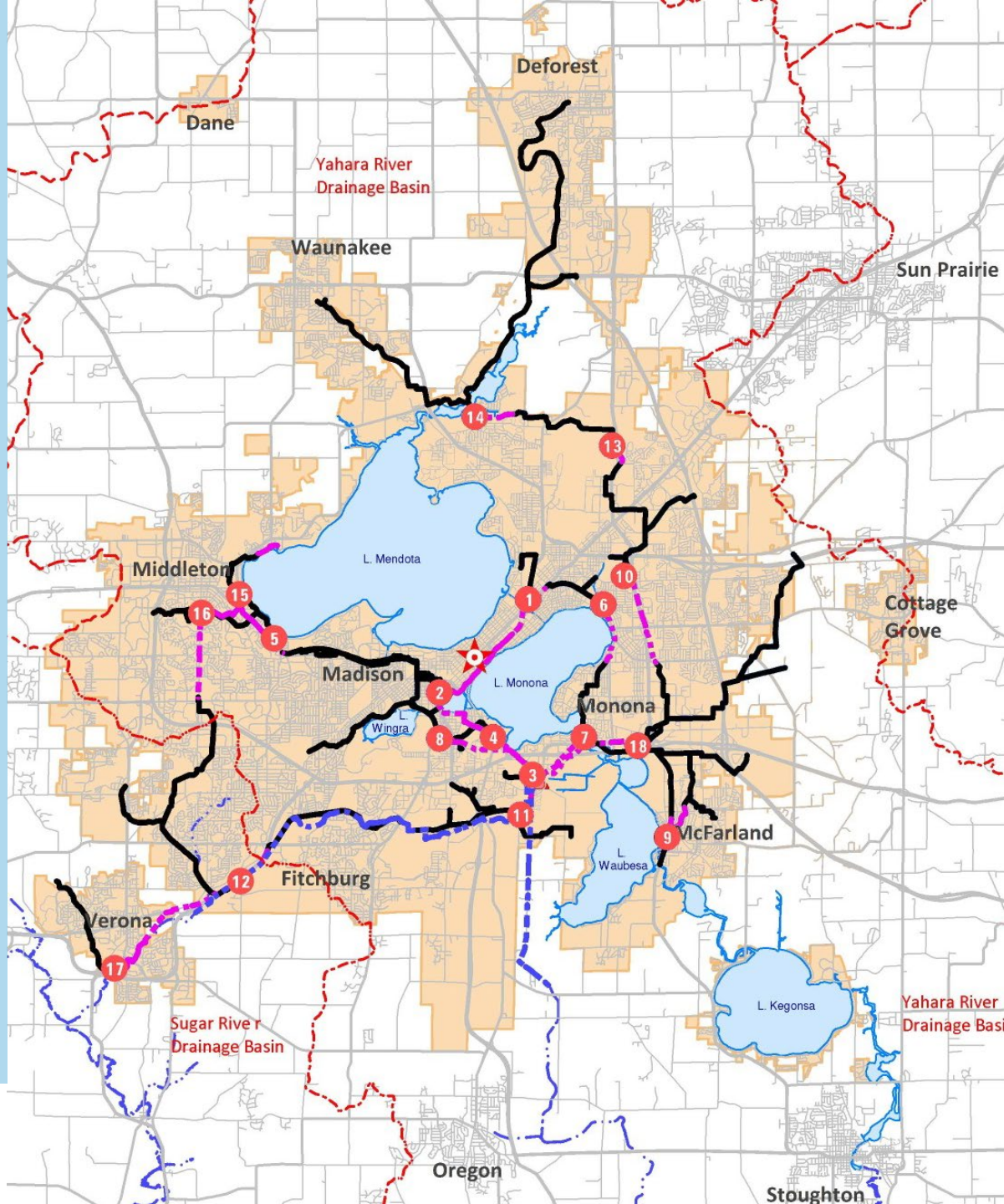


Madison Metropolitan Sewerage District

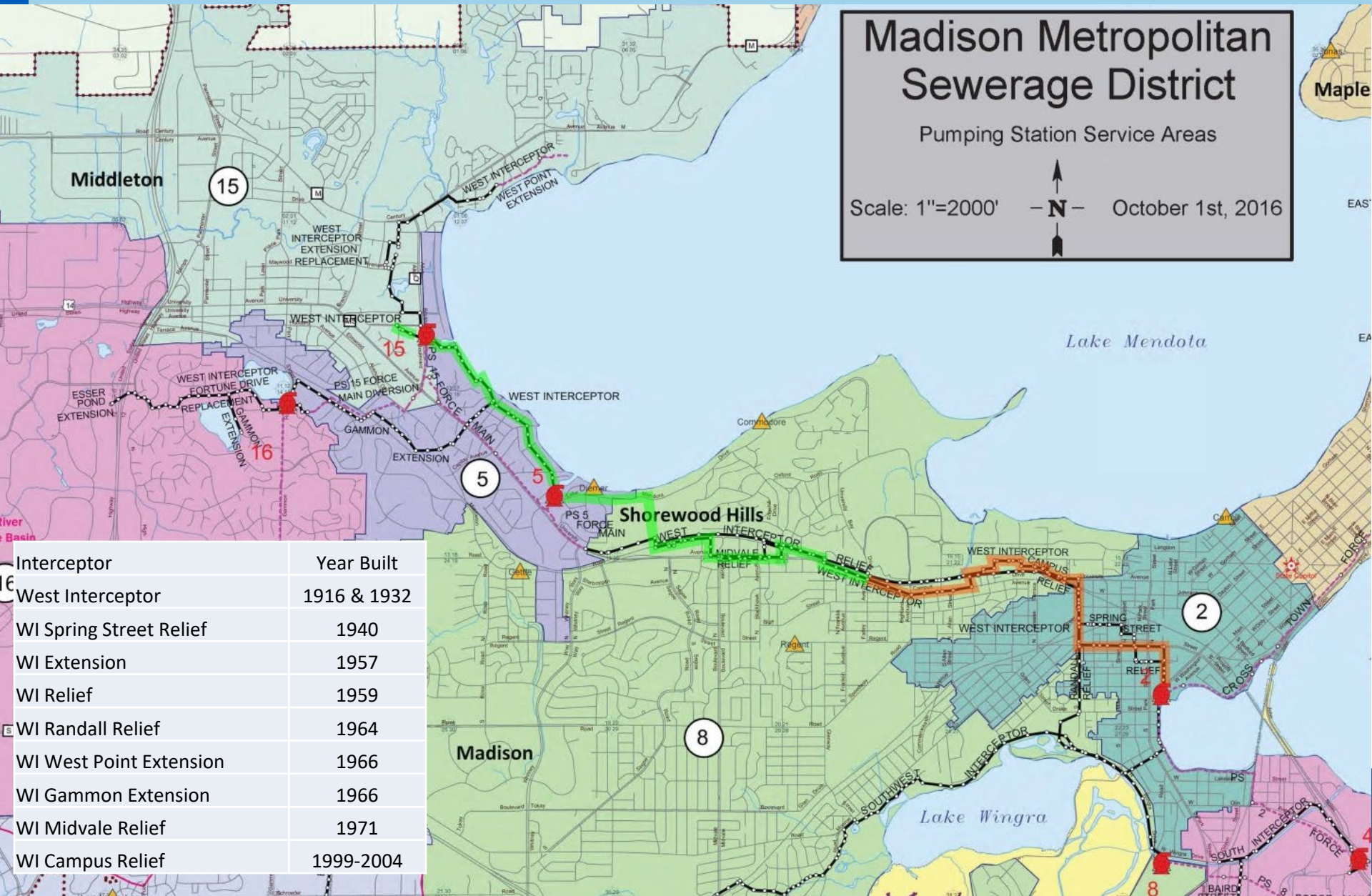
Speed 3x

About MMSD

- Established in 1930
- Regional provider for 26 communities
- 360,000 people
- 184 square miles
- 141 miles of pipe
- 41 million gallons per day on average

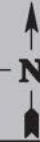


West Interceptor System



Madison Metropolitan Sewerage District

Pumping Station Service Areas

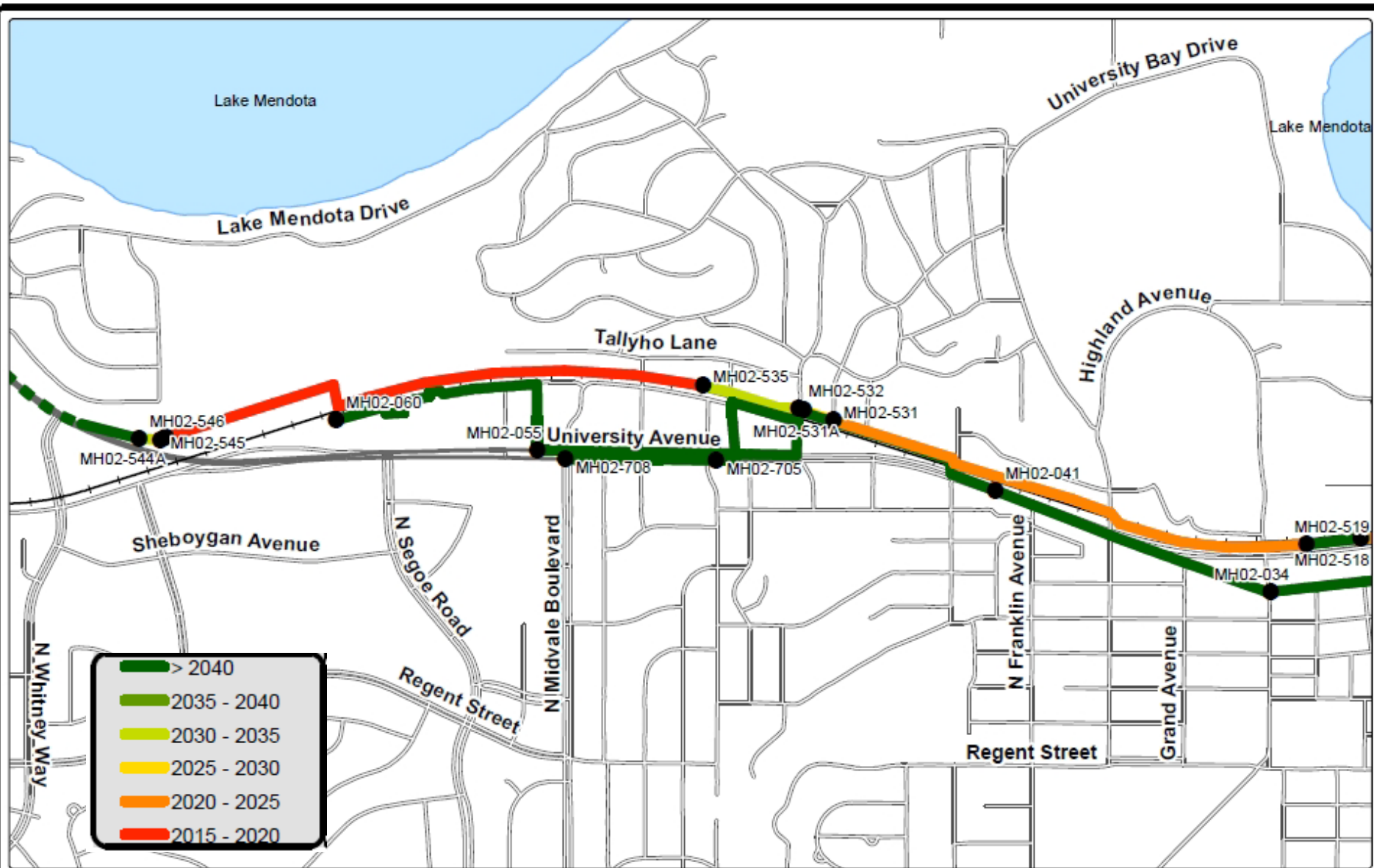


Scale: 1"=2000'

October 1st, 2016

Interceptor	Year Built
West Interceptor	1916 & 1932
WI Spring Street Relief	1940
WI Extension	1957
WI Relief	1959
WI Randall Relief	1964
WI West Point Extension	1966
WI Gammon Extension	1966
WI Midvale Relief	1971
WI Campus Relief	1999-2004

Capacity Needs Drive the Project



Phases and Current Status

Phase 1: Approx 5,700 ft

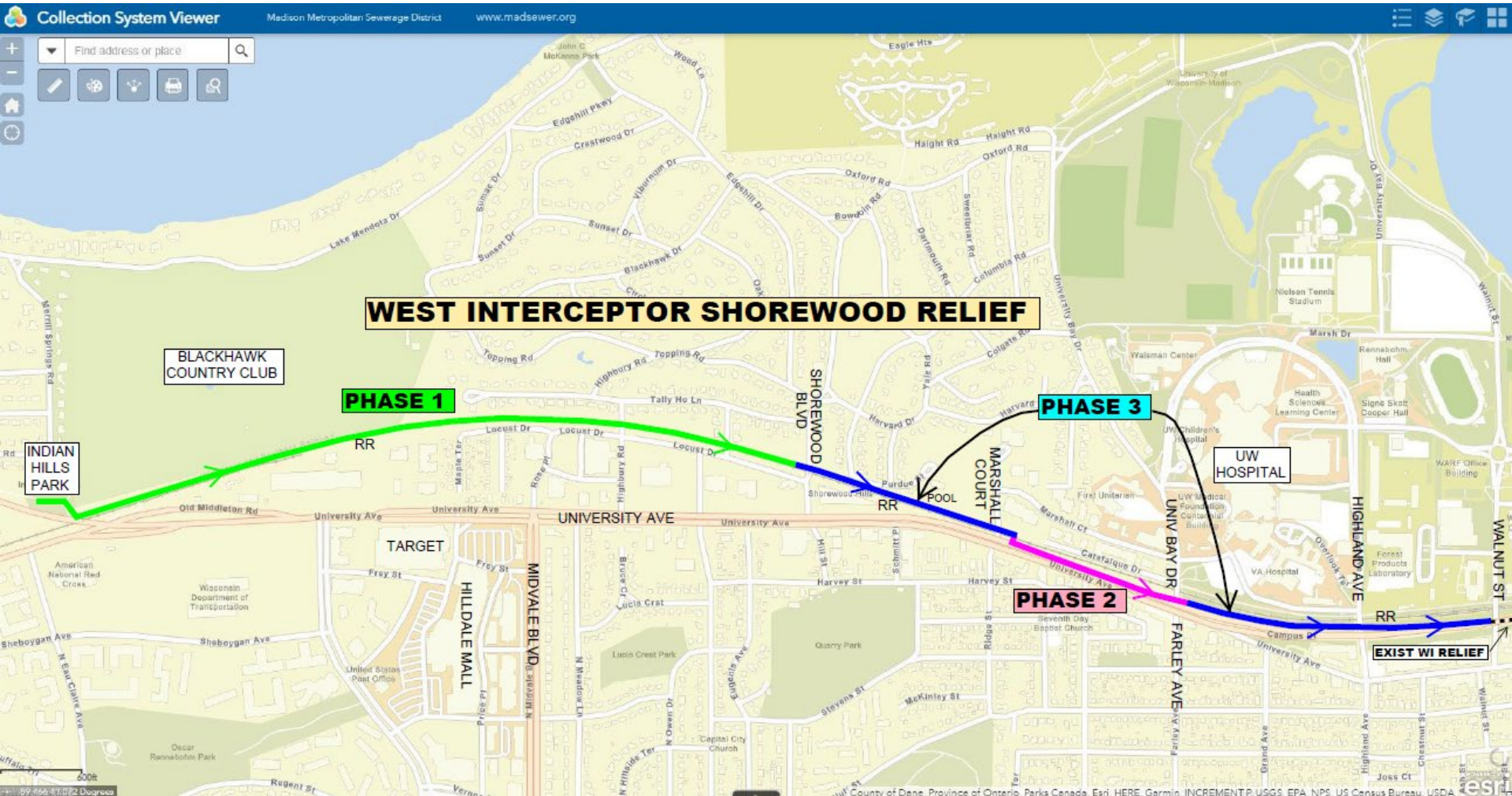
Phase 2: Approx 1,500 ft

Phase 3 Shorewood: Approx 1,870 ft

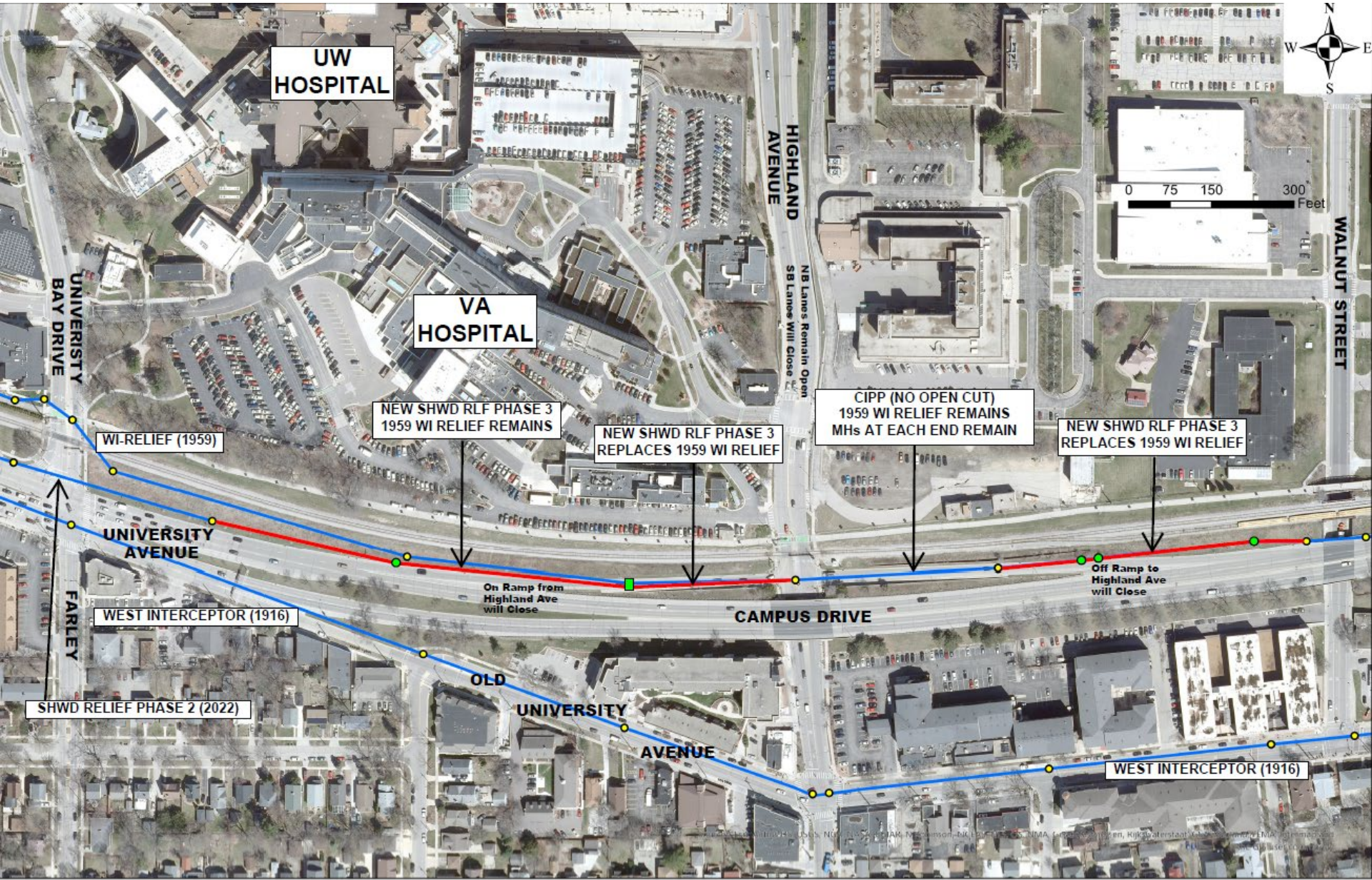
Phase 3 Highland: Approx 2,000 ft

Total:

11,070 ft



Phase 3 – Highland Section



Estimated Traffic Control Phases

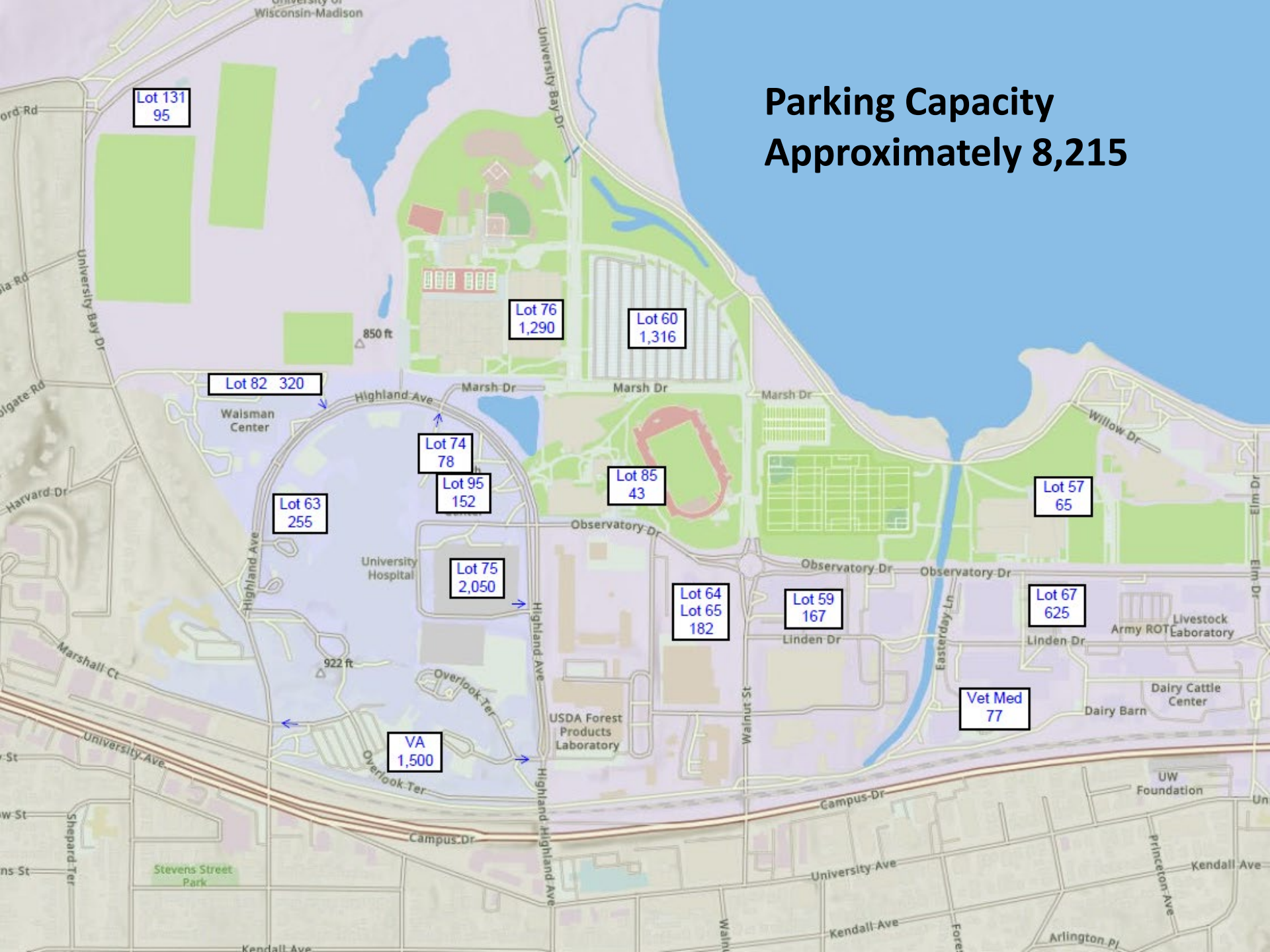
May 15 – June 27 (6 Weeks) Off Ramp to Highland Ave Closed

June 27 – July 26 (4 Weeks) Off Ramp to Highland Ave Closed
N Bound Highland Ave Open
S Bound Highland Ave Closed
On Ramp to Univ Ave Closed

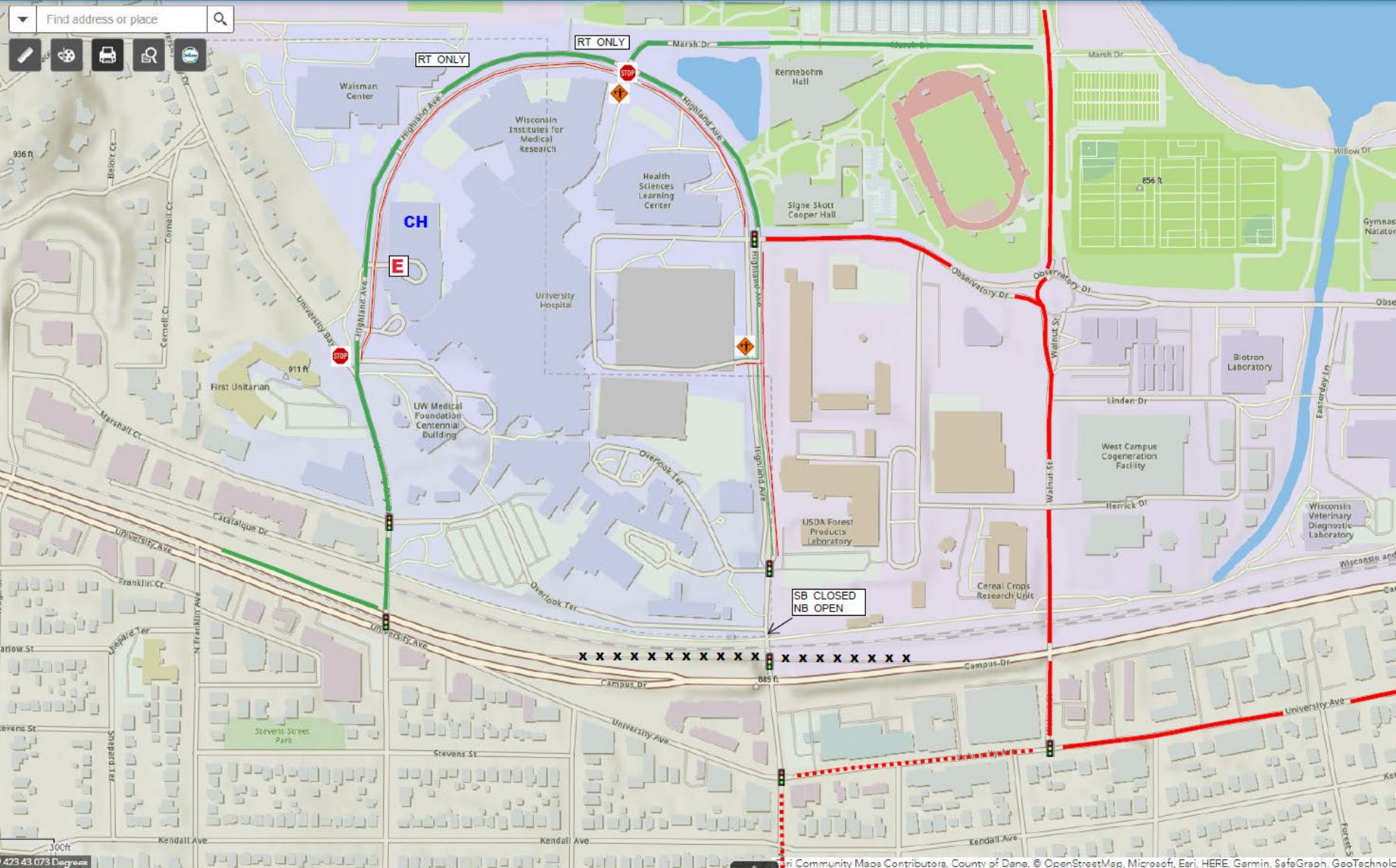
July 27 – Sept 6 (6 Weeks) Off Ramp to Highland Ave Open
On Ramp to Univ Ave Closed
Highland Open



Parking Capacity Approximately 8,215



Potential Routes



Questions?

For questions contact:

Eric Hjellen, P.E., ENV SP

Madison Metropolitan Sewerage District,
Project Manager

Office: 608-222-1201 ext. 348

Cell: 608-347-3613

erich@madsewer.org

