

CITY OF MADISON

PLACE "TRAIL CLOSED" SIGN, 24" X 12" FOR DURATION OF MMSD GRAVITY SEWER WORK ON TEMPORARY SIGN SUPPORT, WITH THE SIGN READABLE FROM THE MILITARY RIDGE STATE TRAIL.

PLACE "TRAIL CLOSED" SIGN, 24" X 12" ON TYPE III BARRICADE.

SEE TC1 FOR DETAILS ON TRAFFIC CONTROL AT USH 18/151 ACCESS

SEE TC2 FOR DETAILS ON TRAFFIC CONTROL AT THE MILITARY RIDGE TRAIL / HAUL ROAD CROSSING.

INSTALL "PROJECT INFO" SIGN ON 24"X36" ALUPANEL SIGN ON TWO U-CHANNEL POSTS

INSTALL "PROJECT INFO" SIGN ON 24"X36" ALUPANEL SIGN ON TWO U-CHANNEL POSTS

SEE TC1 FOR DETAILS ON TRAFFIC CONTROL AT PHEASANT LANE ACCESS

PLACE "TRAIL CLOSED" SIGN, 24" X 12" ON TYPE III BARRICADE FOR DURATION OF MMSD GRAVITY SEWER WORK.

ALL GOOSE LAKE TRAILS TO BE CLOSED FOR DURATION OF MMSD SANITARY GRAVITY SEWER INSTALLATION.

TRAIL CLOSED FOR DURATION OF MMSD GRAVITY SEWER INSTALLATION.

TRAIL SEGMENT TO BE STRAIGHTENED POST-CONSTRUCTION

INSTALL "PROJECT INFO" SIGN ON 24"X36" ALUPANEL SIGN ON TWO U-CHANNEL POSTS

DANE COUNTY WETLANDS

TRAIL SEGMENT TO BE RELOCATED POST-CONSTRUCTION

INSTALL "PROJECT INFO" SIGN ON 24"X36" ALUPANEL SIGN ON TWO U-CHANNEL POSTS

PLACE "TRAIL CLOSED" SIGN, 24" X 12" ON TYPE III BARRICADE FOR DURATION OF MMSD GRAVITY SEWER WORK.

EXISTING TRAIL (TYP.)

NEW TRAIL SEGMENT

NEW RELOCATED TRAIL SEGMENT

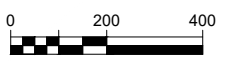
MMSD SANITARY GRAVITY SEWER PROJECT LOCATION

MMSD SANITARY FORCEMAIN PROJECT LOCATION

TOWN OF VERONA

GENERAL NOTES

- THE FOLLOWING SIGNS SHALL BE POSTED A MINIMUM OF 2 WEEKS IN ADVANCE OF TRAIL CLOSURES: TRUCK CROSSING, ROAD WORK AHEAD, AND PROJECT INFO SIGNS.



PROJECT DATE:	DRAWN BY:	KCL	NO.	DATE	REVISION	BY:
			3	5/19/2023	BIDDING	MJW
			4	6/22/2023	BIDDING-FINAL	MJW
			5	9/6/2023	CONFORMED PLANS	MJW



ENGINEERING | ARCHITECTURE | SURVEYING
 FUNDING | PLANNING | ENVIRONMENTAL
 1702 Pankratz St Madison, WI 53704
 (608) 242-7779 www.msa-ps.com
 © MSA Professional Services, Inc.

PUMPING STATION 17 FORCEMAIN RELIEF PHASE 2
 MADISON METROPOLITAN SEWER DISTRICT
 USH 151 CORRIDOR - VERONA, WI

TRAFFIC CONTROL - DANE COUNTY TRAILS

PROJECT NO.
01579041
 SHEET
TC4