

PUMPING STATION 17 FORCE MAIN RELIEF PHASE 2

**Public Information Meeting #4
September 20, 2023**

Madison Metropolitan Sewerage District





Opening & Housekeeping Items

1. Format
2. Mute/Chat
3. Questions



Agenda

1. About the District
2. Project Background
3. Construction Corridor/Specifics
4. Selected Improvements Update
5. Trail Closures/Detours
6. Construction Schedule
7. Communication during construction
8. Questions

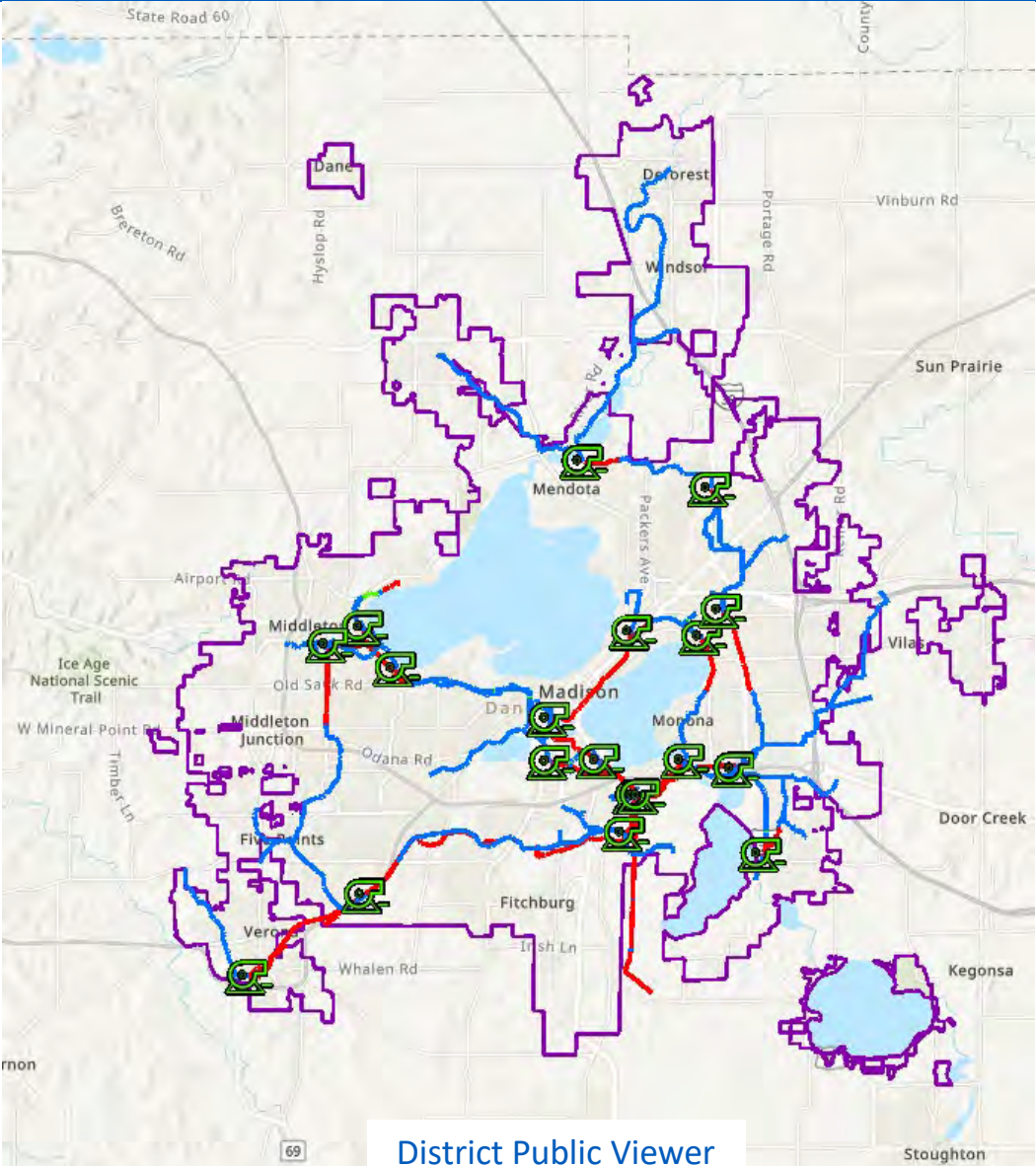
About the District

400,000+

People served in 26 communities

36

Millions of gallons of wastewater treated on average day



145+

Miles of pipe
(Gravity & Force main)

18

Pumping Stations

Force Main Sewer

Flow has to be “forced” through the main because gravity alone is not enough to move it.

Gravity Sewer

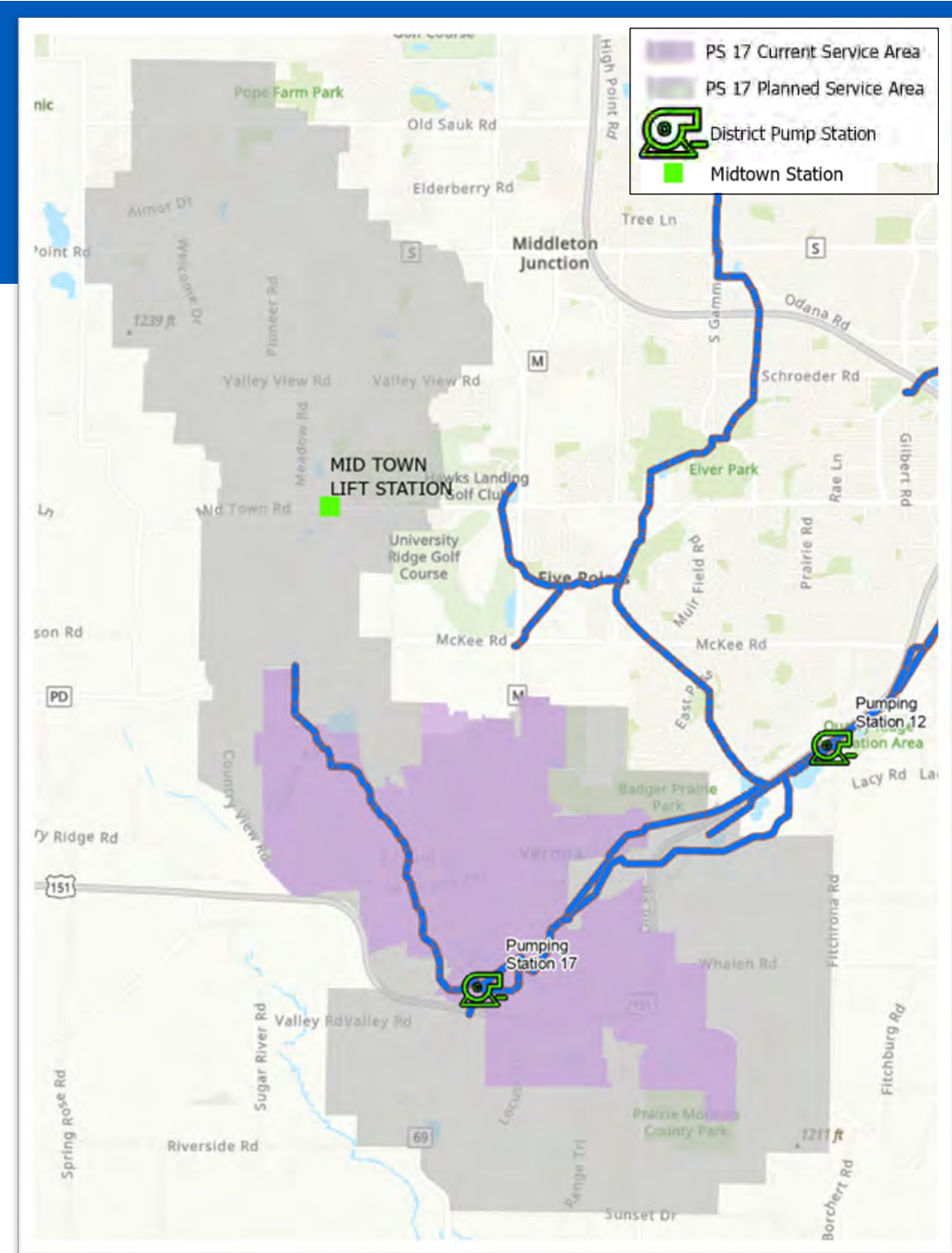
Flow uses gravity to get to pump stations and treatment plants.



What is a force main?

Pumping Station 17 – Planned Service Area

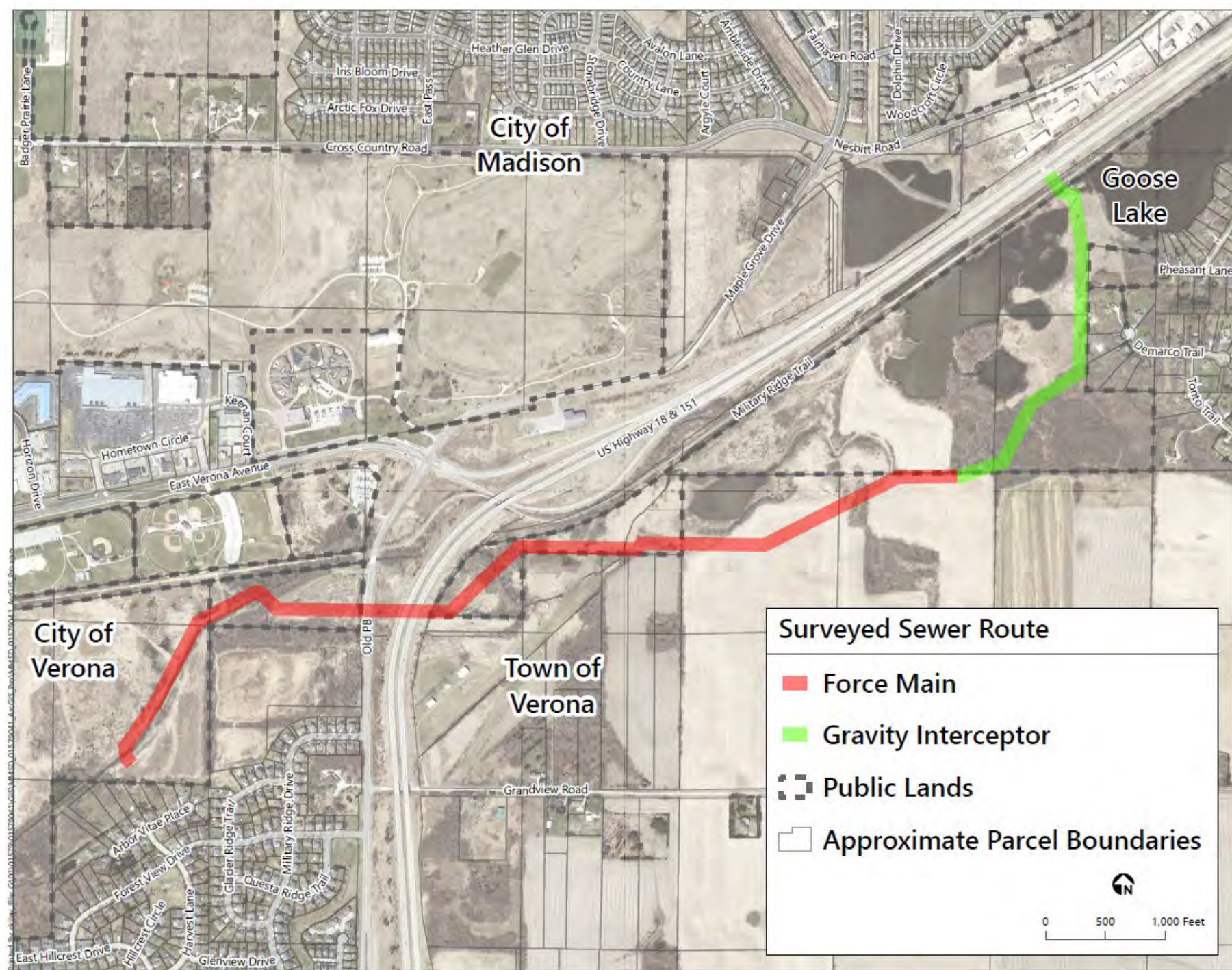
- Anticipated future service area shown in gray
- Station **long-term** to serve:
 - City of Verona
 - Town of Verona (portion)
 - City of Madison (portion)
 - Town of Middleton (portion)
- Current Capacity Limitations:
 - Mid Town PS
 - LBMCI Connection
 - PS 17
 - PS 17 FM



Project Background



Final Route



Construction Corridor



NO.	DATE	REVISION
1	9/19/2023	100% PROJECT SUBMITTAL
2	9/19/2023	REVISIONS
3	9/22/2023	REVISIONS
4	9/22/2023	REVISIONS

MSA ENGINEERING | ARCHITECTURE | SURVEYING
 FUNDING | PLANNING | ENVIRONMENTAL
 1703 Parkside St. Madison, WI 53704
 608.262.1777 www.msa.com

PUMPING STATION 17 FORCEMAIN RELIEF PHASE 2
 MADISON METROPOLITAN SEWER DISTRICT
 USH 151 CORRIDOR - VERONA, WI

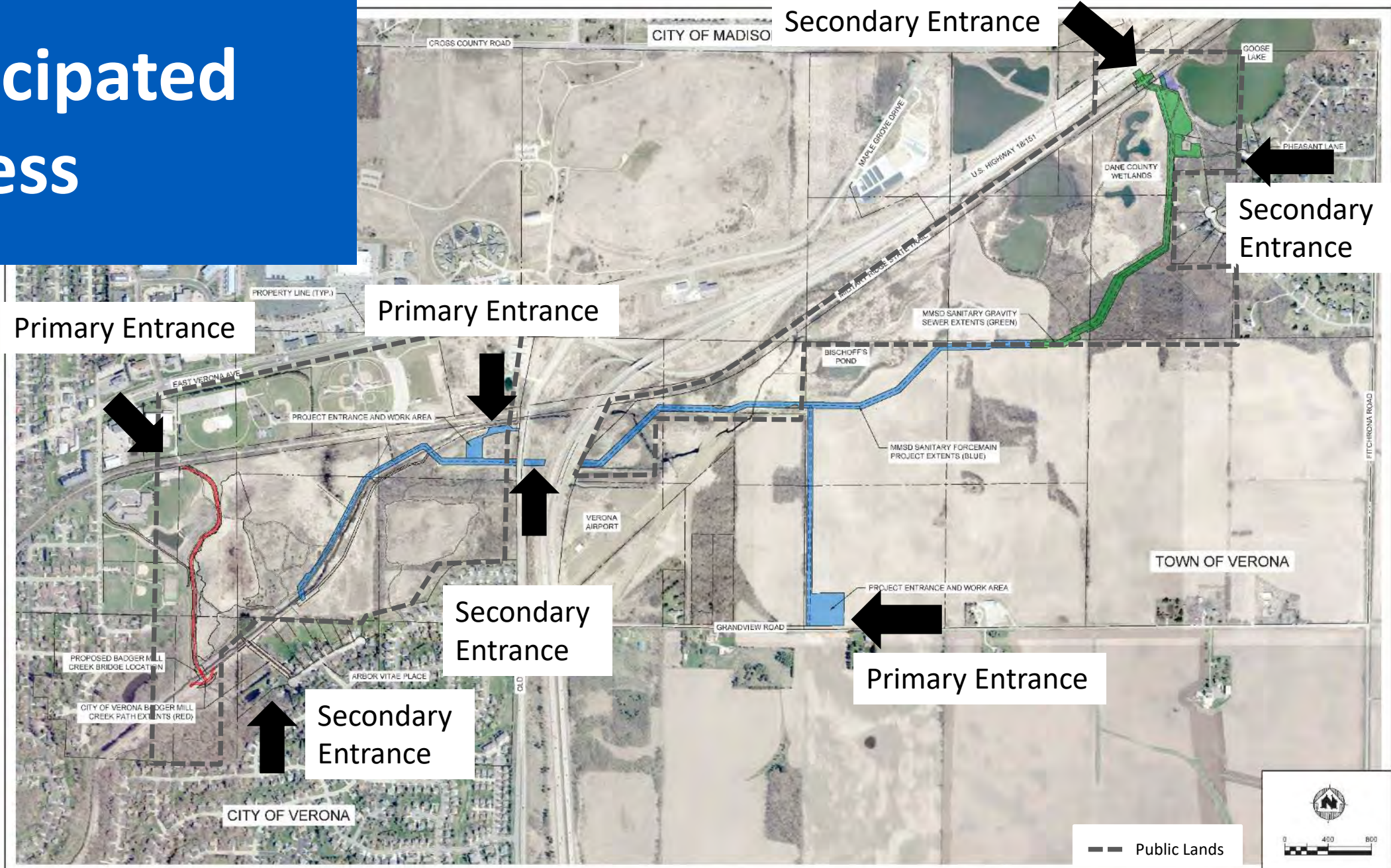
PROJECT OVERVIEW

0 400 800

11/04/23 01579041

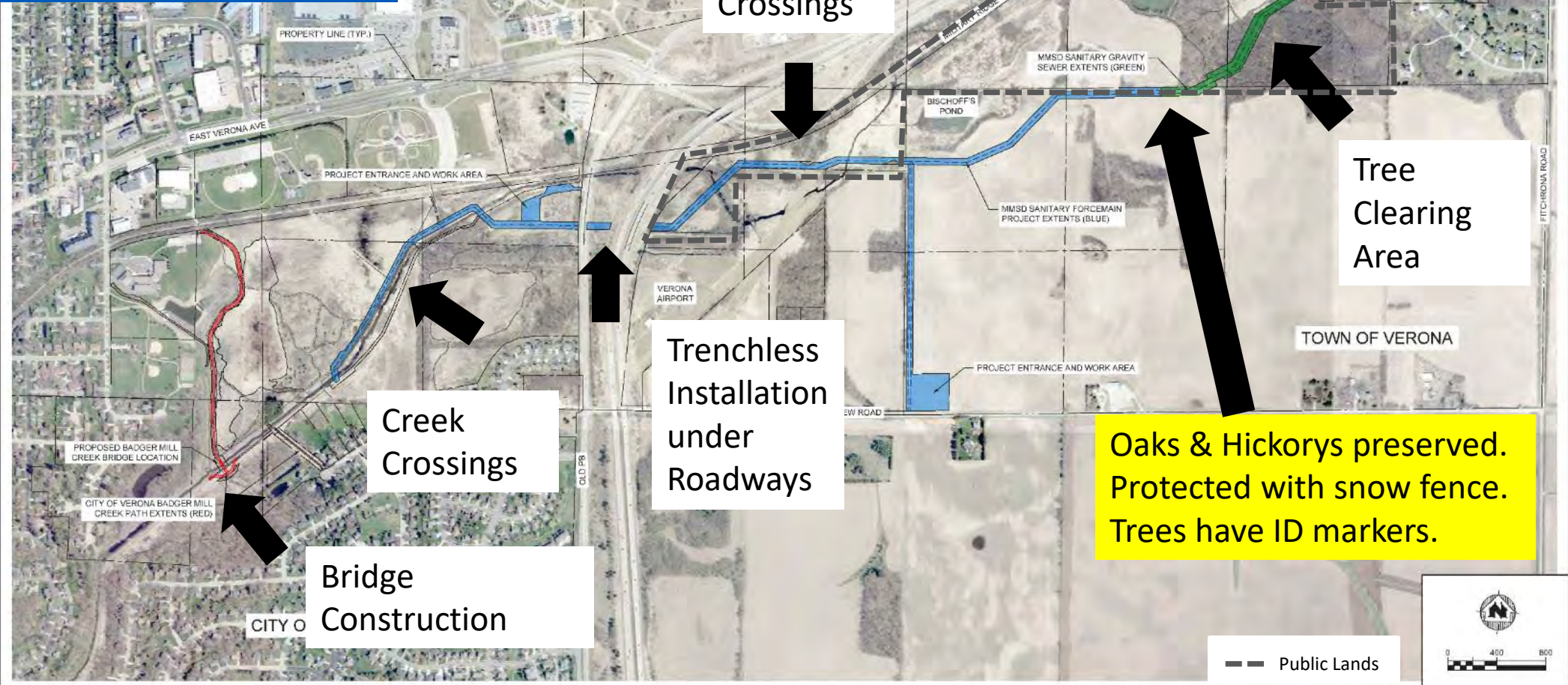
EX1

Anticipated Access



PROJECT DATE:	DRAWN BY: KCL 2 11/19/2020	NO. 2	DATE 11/19/2020	REVISION 100% PROGRESS SUBMITTAL	BY MAM
DESIGNED BY: MAM 3 11/19/2020	CHECKED BY: KCL 4 11/22/2021	NO. 3	DATE 11/19/2020	REVISION 100% PROGRESS SUBMITTAL	BY MAM
ENGINEERING ARCHITECTURE SURVEYING PLANNING PROGRAMMING TRANSPORTATION 1702 Parkside St. Madison, WI 53704 (608) 242-7777 www.msa.com					
PUMPING STATION 17 FORCEMAIN RELIEF PHASE 2 MADISON METROPOLITAN SEWER DISTRICT USH 151 CORRIDOR - VERONA, WI			PROJECT OVERVIEW		01579041 EX1

Construction Key Notes



PROJECT DATE:	DRAWN BY: KCL 2	DATE: 11/19/2023	REVISION:	BY: MJA
	DESIGNED BY: MJA 3	DATE: 11/19/2023	100% PROGRESS SUBMITTAL	MJA
	CHECKED BY: KCL 4	DATE: 11/22/2023	REVISION: 1.0	MJA

MSA ENGINEERING | ARCHITECTURE | SURVEYING
 CONSULTING | PLANNING | TRANSPORTATION
 1702 Parkside St Madison, WI 53704
 (608) 242-2779 www.msa.com

PUMPING STATION 17 FORCEMAIN RELIEF PHASE 2
 MADISON METROPOLITAN SEWER DISTRICT
 USH 151 CORRIDOR - VERONA, WI

PROJECT OVERVIEW

01579041
 EX1



Project Specifics

- Anticipated length is 11,350 feet or > 2 miles total
 - 8,000 of force main sewer
 - 3,350 feet of interceptor sewer
- Anticipated depth is 10 – 28 feet
- Anticipated width of disturbance varies ~ 60-100 feet.
- Bridge construction
- Tree removals
- Asphalt paving
- Restoration



Photo: Looking east, east of Lincoln Street Bridge

Selected Improvements

Complete with Construction Project:

- 1 – Badger Mill Creek Path Extension & Paving of Arbor Vitae Connection
- 7 – Oak Treeline Restoration & Select Clearing
- 9 – Native Prairie Restoration
- 10 – Native Prairie Restoration
- 11 – Pheasant Lane Trail Widening

Complete by Dane County after project:

- 3 – Native Prairie Restoration*
- 6 – Native Prairie Restoration

Complete by Ice Age Trail after project:

- 2 – Re-Alignment of Ice Age Trail

(Map to follow)

* with Friends of Badger Mill Creek

Friends of Badger Mill Creek Work Completed / Plans



Photo: Looking south, south of Lincoln Street Bridge

Invasive Removals (completed):

- Oak tree line near Military Ridge Reserve
- South perimeter of Military Ridge Reserve
- Ice Age Trail alignment in woods, west of Arbor Vitae Place
- Along Badger Mill Creek path

Area #3*:

Phase 1 – Spring 2023 herbicide treatment

Phase 2 – Spring 2024 herbicide treatment

Phase 3 – Seeding (Schedule TBD)

*working with Lars Higdon at Dane Co. Parks

corrected with minutes

Information provided by Brian Christian

SELECTED IMPROVEMENTS MADE POSSIBLE BY MADISON METROPOLITAN SEWERAGE DISTRICT, DANE COUNTY, CITY OF VERONA, TOWN OF VERONA, ICE AGE TRAIL, & FRIENDS OF BADGER MILL CREEK ENVIRONMENTAL CORRIDOR



* Final route to be determined in-field by Ice Age Trail

Native Prairie Restoration Goals

- Historical landscape – wetland & savanna
- Fire-dependent species – oak & hickory
- Habitat/ecosystem value



Selected Improvement #1 Badger Mill Creek Path



Selected Improvement #2 Ice Age Trail Realignment





NOTICE

**TEMPORARILY
CLOSED**

**FOR YOUR
SAFETY**

**TRAIL
CLOSED**

Anticipated Trail Detours & Closures

Military Ridge State Trail Anticipated Crossing

- Active during stage 1 activities
- Fall 2023 – Summer 2024



Badger Mill Creek Path Anticipated Closure

- Closure during Stage 1 activities
- Fall 2023 – Summer 2024
- Between Lincoln Street & Arbor Vitae Place

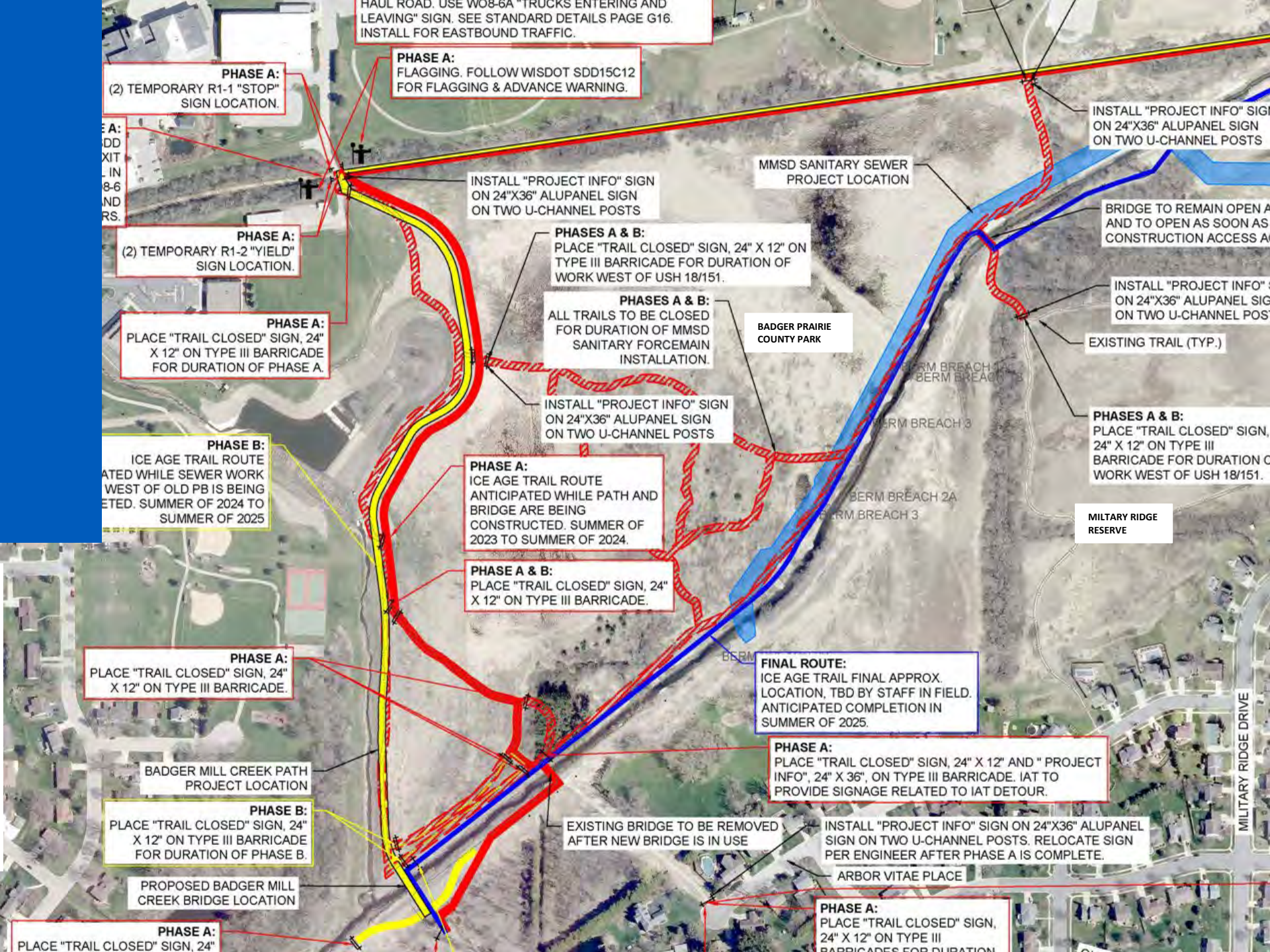


Trails

Anticipated Detour & Closures

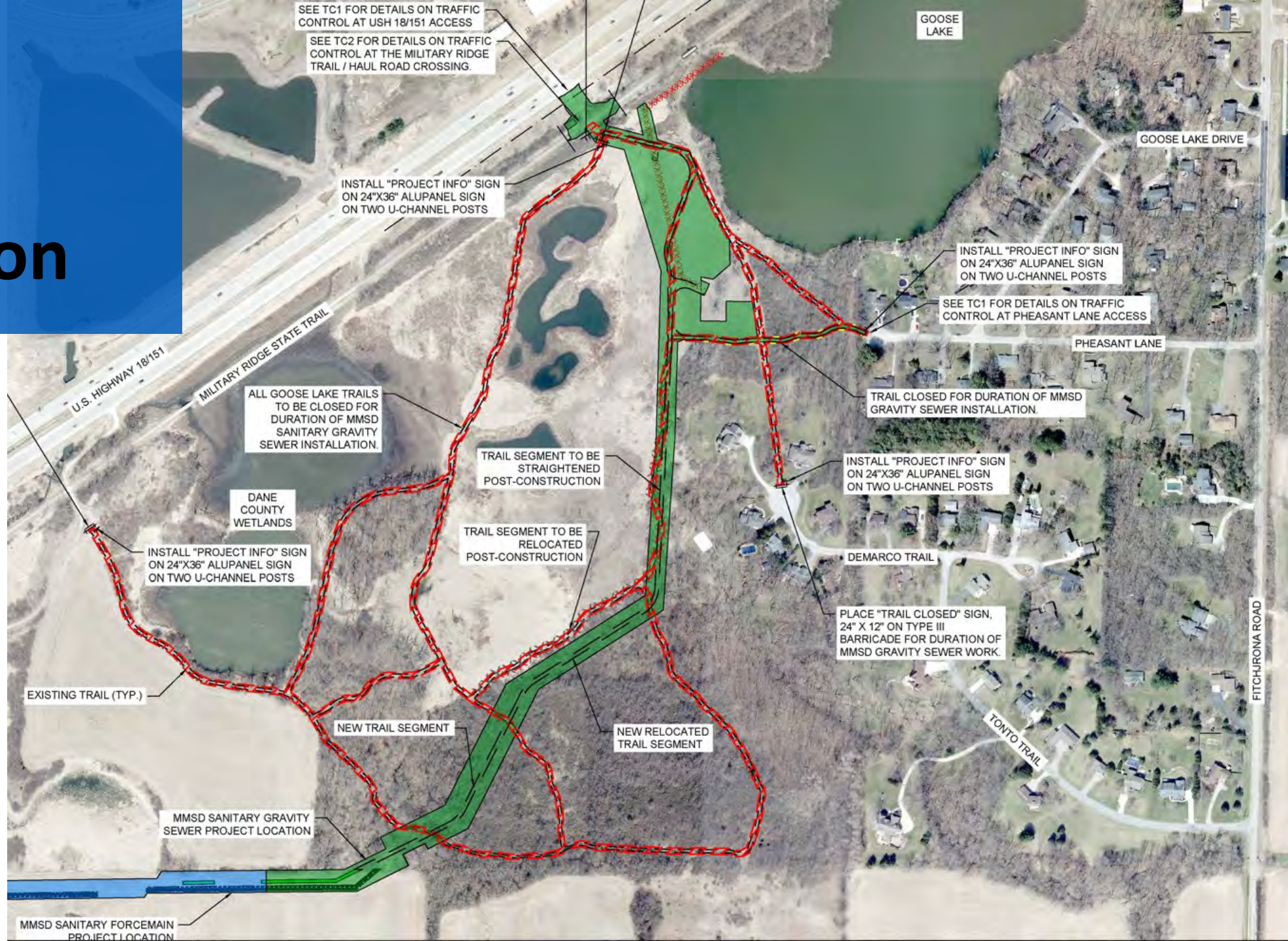
City Section

- Starting Fall 2023
- IAT Detour
- IAT Re-route
- Local grassed trails closed



Local Trail Closures Town Section

- Local trails closed Fall 2023 for duration of project.



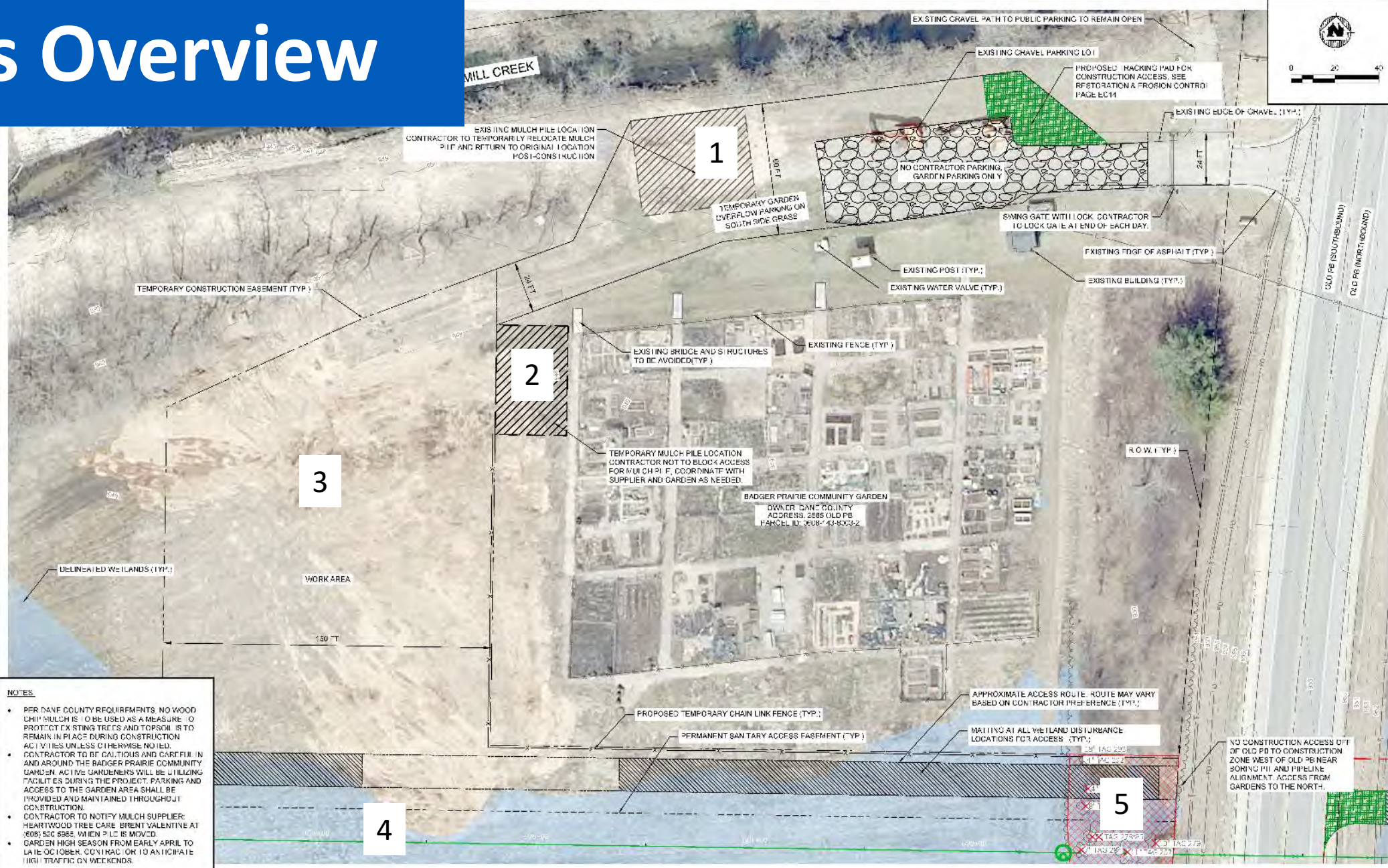
Gardens Access

1. Setup in fall of 2023. Anticipating majority of truck traffic from fall 2023 thru spring of 2025.
2. Separated construction access lane.
3. Garden parking to temporarily move to south side only.



Gardens Overview

1. Mulch pile to be temp. relocated
2. Mulch pile to remain
3. Storage area for project
4. Sewer pipe open trenching area
5. Trenchless pit work zone

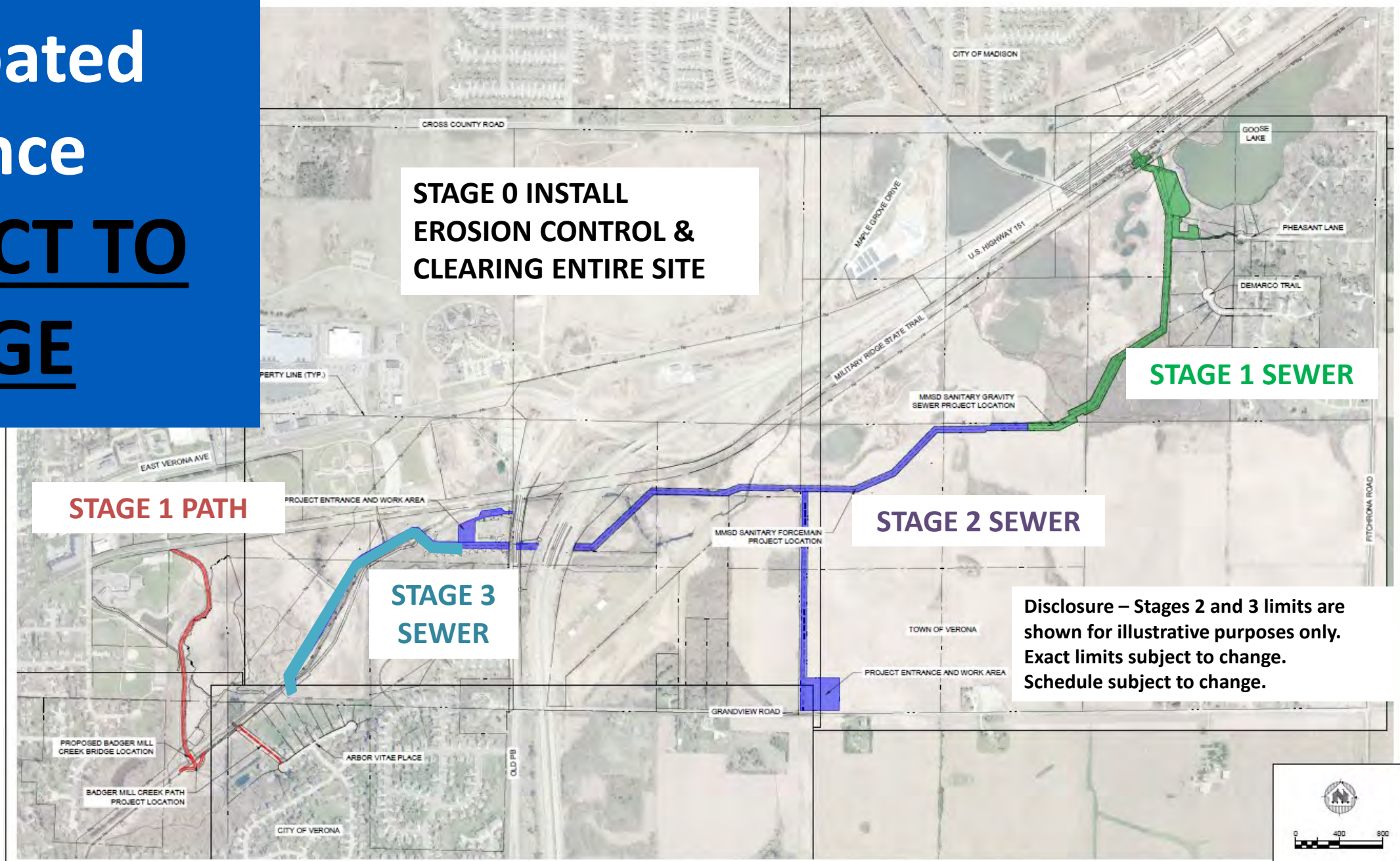


NOTES

- PER DAKE COUNTY REQUIREMENTS, NO WOOD CHIP MULCH IS TO BE USED AS A MEASURE TO PROTECT EXISTING TREES AND TOPSOIL IS TO REMAIN IN PLACE DURING CONSTRUCTION ACTIVITIES UNLESS OTHERWISE NOTED.
- CONTRACTOR TO BE CAUTIOUS AND CAREFUL IN AND AROUND THE BADGER PRAIRIE COMMUNITY GARDEN. ACTIVE GARDENERS WILL BE UTILIZING FACILITIES DURING THE PROJECT. PARKING AND ACCESS TO THE GARDEN AREA SHALL BE PROVIDED AND MAINTAINED THROUGHOUT CONSTRUCTION.
- CONTRACTOR TO NOTIFY MULCH SUPPLIER: HEARTWOOD TREE CARE BRENT VALENTE AT 608-530-5885 WHEN PILE IS MOVED.
- GARDEN HIGH SEASON FROM EARLY APRIL TO LATE OCTOBER. CONTRACTOR TO ANTICIPATE HIGH TRAFFIC ON WEEKENDS.

Anticipated Sequence

SUBJECT TO CHANGE



STAGE 0 INSTALL EROSION CONTROL & CLEARING ENTIRE SITE

STAGE 1 SEWER

STAGE 1 PATH

STAGE 2 SEWER

STAGE 3 SEWER

Disclosure – Stages 2 and 3 limits are shown for illustrative purposes only. Exact limits subject to change. Schedule subject to change.



PROJECT DATE:	DRAWN BY:	NO.	DATE:	REVISION:	BY:
2023031114 AK, 01010700070001, Force MMSD Project/ACC/Consultor/Document/Phase/1/1/001 Page 04/06 (Overview Sheet).dgn	NCL	1	1/12/2023		MSW
	DESIGNED BY:				
	CHECKED BY:				

PRELIMINARY



**PUMP STATION 17 FORCEMAIN RELIEF PHASE 2
MADISON METROPOLITAN SEWER DISTRICT
USH 151 CORRIDOR - VERONA, WI**

PROJECT OVERVIEW

PROJECT NO: 01579041
SHEET: EX1



Anticipated Schedule

Stage 0

Start - November 2023

Stage 1

Winter 2023-Spring 2024

Badger Mill Creek Path – Open June 2024

Stage 2

Winter 2023-2024

Continues throughout 2024

Stage 3

Complete June/July 2025

Summer 2025

All work complete, warranty period begins

Disclosure – Stages 2 and 3 limits are shown for illustrative purposes only. Exact limits subject to change. Schedule subject to change.

Project Webpage

District will use project website to post schedule updates and communicate

The screenshot shows the Madison Metropolitan Sewerage District website. The header includes the district name, navigation links (COMMISSIONER, CAREERS, CONTACT), a language selector, and a search icon. The main navigation bar lists: Who We Are, What We Do, Pollution Prevention, Do Business With Us, and News & Resources. The page title is "Current Projects: Pumping Station 17 Force Main Relief, Phase 2". Below the title is a breadcrumb trail: Home / What We Do / Current Construction Projects / Pumping Station 17 Force Main Relief, Phase 2. A map shows the project location in the Verona/Fitchburg area. A "PROJECT DETAILS" sidebar on the right lists: Project Type: Construction, Sewer Relief; Location: This phase of the Pumping Station 17 Force Main Relief will continue north of Arbor Vitae Place and run east to the Goose Lake area; Impact: Major; Schedule: Design: November 2021-April 2023; Bid: May 2023; Construction: Summer/Fall 2023 - Summer 2025; Status: Design Phase. The "Project Overview" section begins with: "The Madison Metropolitan Sewerage District's Pumping Station 17 helps convey sanitary waste from the City of Verona and City of Madison to the Nine Springs Treatment Plant in a pressurized sewer known as a force main. This force main was constructed in 1995. Due to historical and projected growth in these areas and the fact that local pumping stations will soon reach their capacity a

madsewer.org/ps17-force-main-relief

Madison Metropolitan Sewerage District



Contact Info

Madison Metropolitan Sewerage District

Theran Jacobson, P.E. | Project Engineer

TheranJ@madsewer.org

MSA Professional Services, Inc.

Kevin Lord, P.E., PLS | Municipal Engineer, Surveyor

klord@msa-ps.com

City of Verona - Badger Mill Creek Paved Path

Adam Waszak | Interm Director of Public Works

Adam.waszak@ci.verona.wi.us

Ice Age Trail

Chad DuChateau | Director of Trail Operations

chad@iceagetrail.org

Dane County

Theresa Nelson | Stormwater Engineer

Nelson.Theresa@countyofdane.com

Dane County

Chris James | Senior Landscape Architect

james@countyofdane.com

Town of Verona

W. Christopher Barnes, P.E. | Director of Public Works

CBarnes@town.verona.wi.us

Friends of Badger Mill Creek

Brian Christian | Local Contact

bchristi490@gmail.com





Questions?

