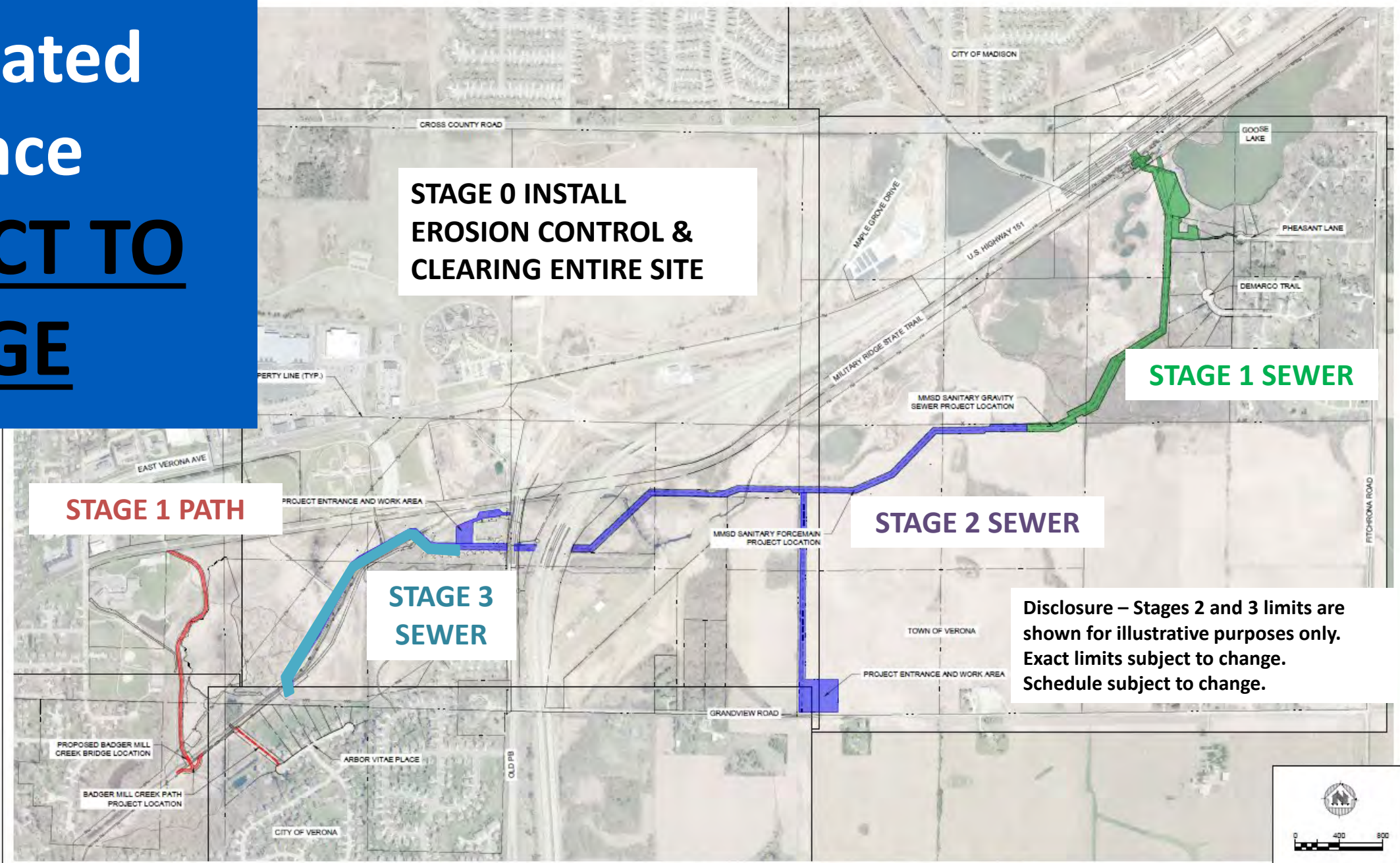


# Anticipated Sequence

## SUBJECT TO CHANGE



**STAGE 0 INSTALL EROSION CONTROL & CLEARING ENTIRE SITE**

**STAGE 1 SEWER**

**STAGE 1 PATH**

**STAGE 2 SEWER**

**STAGE 3 SEWER**

**Disclosure – Stages 2 and 3 limits are shown for illustrative purposes only. Exact limits subject to change. Schedule subject to change.**



PROJECT DATE:	DRAWN BY:	NO.	DATE:	REVISION:	BY:
2023031114 AK, 01/16/2023	NCL	1	1/12/2023	PRELIMINARY	MSW
DESIGNED BY:	CHECKED BY:				
NCL	NCL				

**MSA** ENGINEERING | ARCHITECTURE | SURVEYING  
 FUNDING | PLANNING | ENVIRONMENTAL  
 1702 Parkrats St Madison, WI 53704  
 (608) 245-7770 www.msa-us.com  
 © MSA Professional Services, Inc.

**PUMP STATION 17 FORCEMAIN RELIEF PHASE 2  
 MADISON METROPOLITAN SEWER DISTRICT  
 USH 151 CORRIDOR - VERONA, WI**

PROJECT OVERVIEW

PROJECT NO: 01579041  
 SHEET: EX1