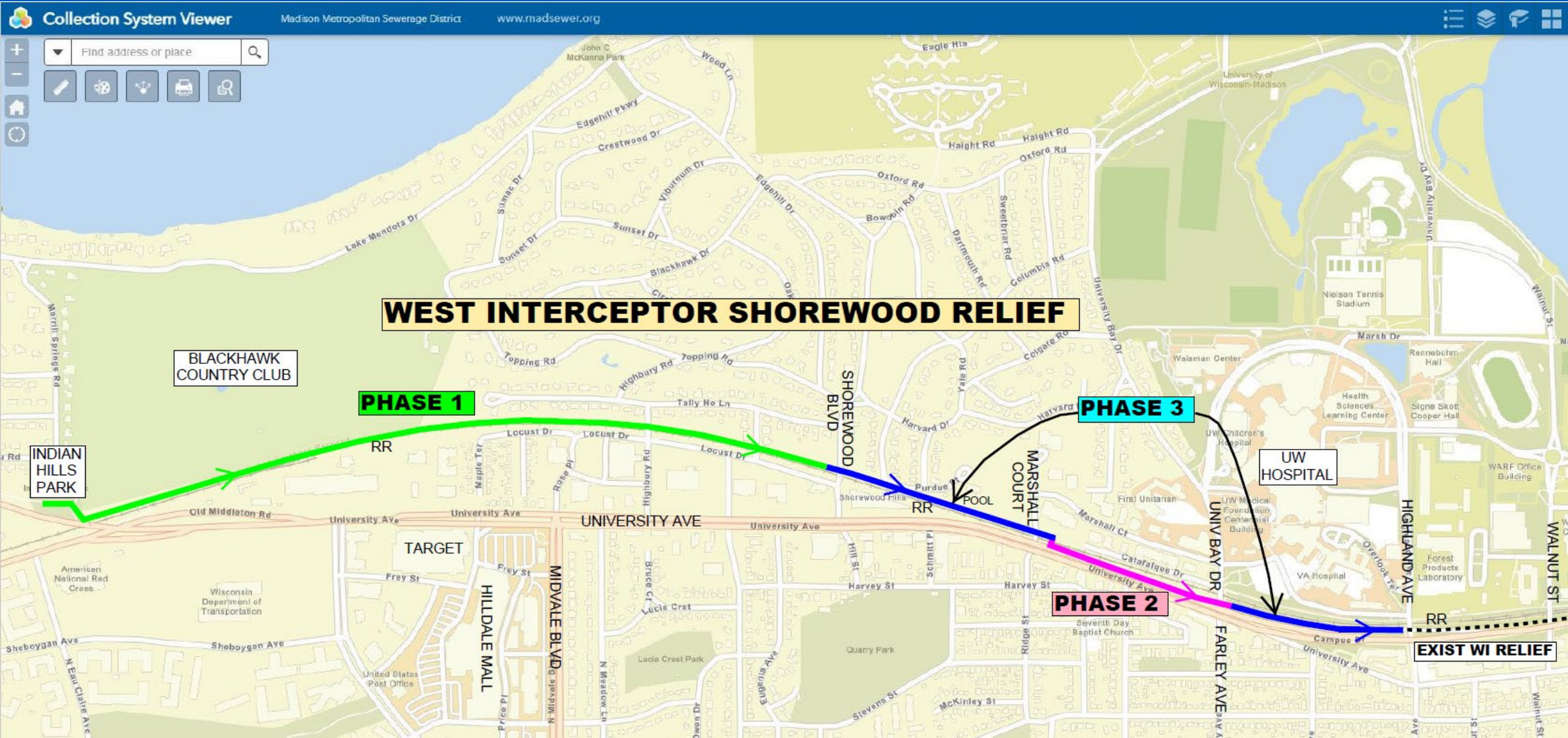


Increase Project Scope and Increase in Total Project Cost: West Interceptor Shorewood Relief Phase 3

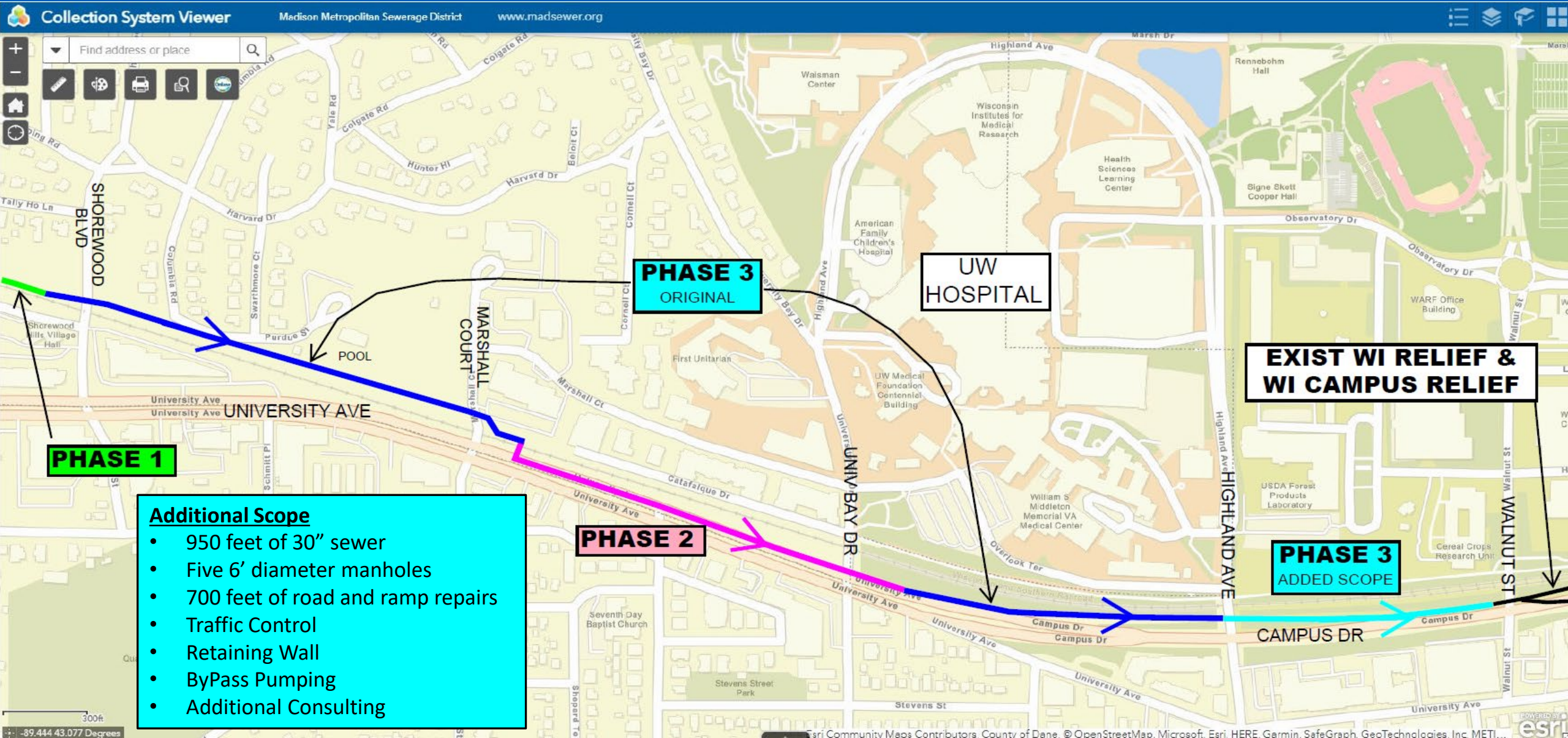
June 15, 2023



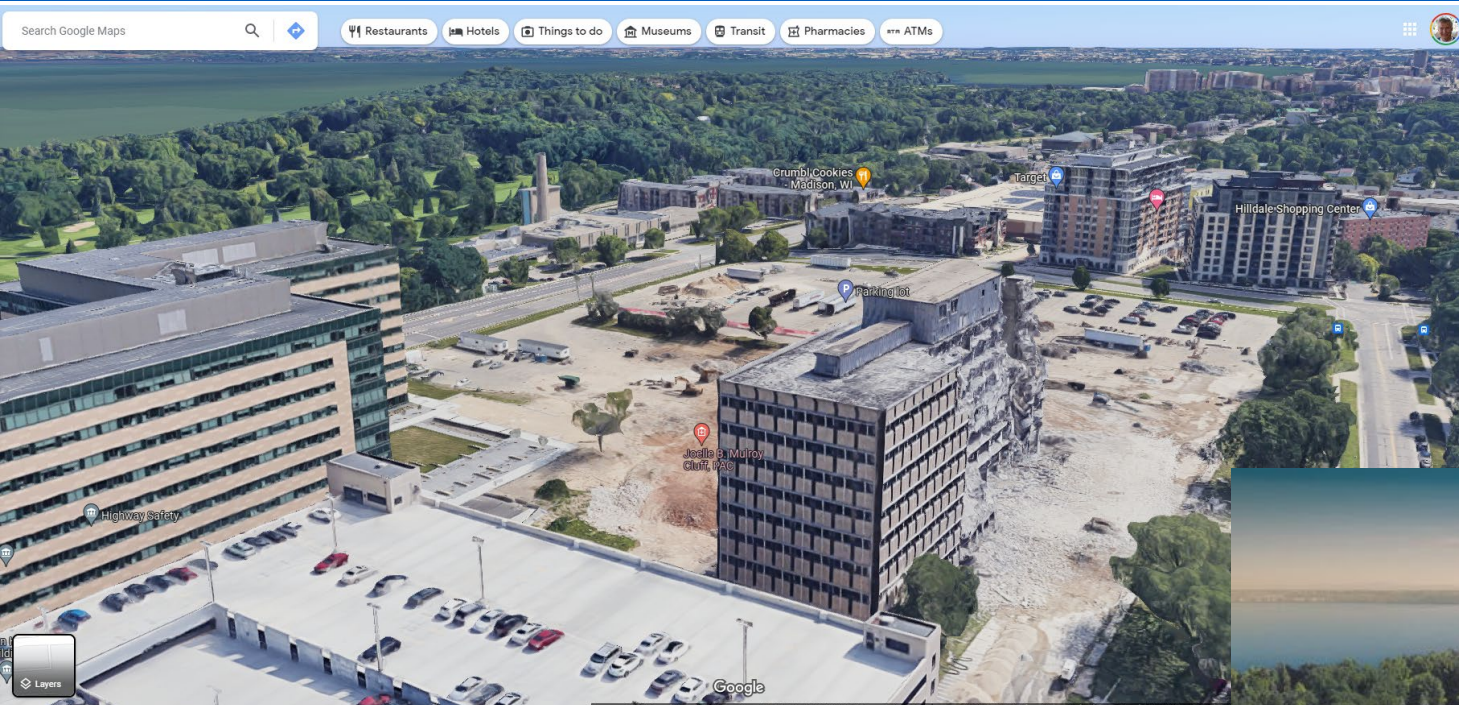
Original Map of WI Shorewood Relief – Phase 1, 2, & 3



New Map of WI Shorewood Relief – Phase 2, & 3



Infill Example – Madison Yards/Hill Farms

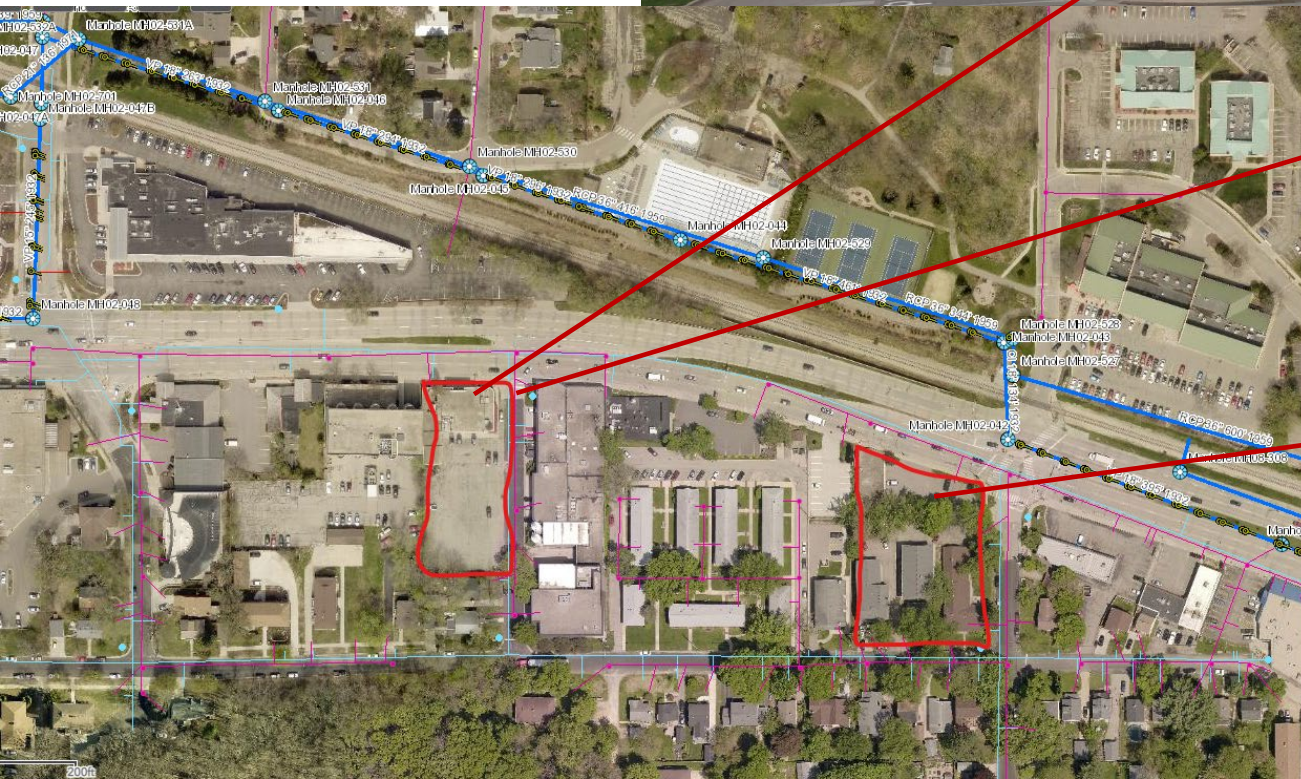


21 Acre Mixed Use Development
Construction Started 2021
Formerly Hill Farms Offices and Parking Lot

Up to 540 Residential Units
125+ Hotel Rooms
1,000,000 SF Office (2,500+ Employees)
50,000 SF Retail, Restaurant, Coffee Shop, Bar, Entertainment
50,000 SF Whole Foods Market



Infill Examples



Resolution

2023-06-15-R6

The Commission is requested to approve Resolution 2023-06-15-R6, increasing the scope and total project cost of the West Interceptor Shorewood Relief-Phase 3 Project from \$5,481,000 to \$7,625,000.

Questions?

Madison Metropolitan
Sewerage District

Visitor

Madison Metropolitan
Sewerage District

Madison Metropolitan Sewerage District

Madison Metropolitan Sewerage District