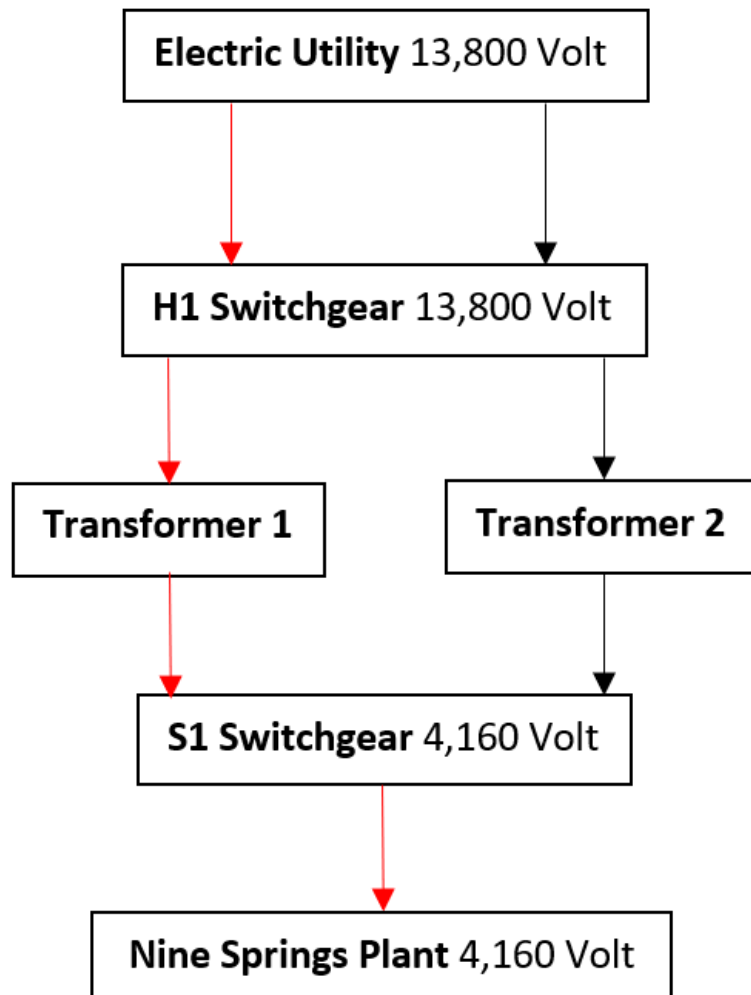


Approval of Increased Transaction Amount: Contract for Professional Services for NSWTP Electrical Service Equipment Replacement

June 15, 2023

Madison Metropolitan Sewerage District

Background



The Electrical Service Equipment Provides
Critical Connection to Electrical Grid



Madison Metropolitan Sewerage District



Site Map





Financial Impact

	Total Project Cost	Estimate of Consultant Fees
Approved 2023 CIP	\$4.739 million	\$535,000
Draft 2024 CIP	\$13.8 million	\$972,295



Project Cost Estimate Increased

Significant changes to scope

- Main switchgear complete replacement in new location vs. rehab in place
- Larger brick and mortar vs. small prefabricated steel building
- Increased cost of electrical equipment, materials and labor due to inflation





Stage 1 – Alternatives Analysis

Complete - \$87,305

Stage 2, Stage 3 - Design

Proposed - \$594,990

Stage 4 – Construction Services

Future – Estimate \$290,000

Professional Services Donohue & Associates

Madison Metropolitan Sewerage District



Resolution

The Commission is requested to approve Resolution 2023-06-15-R5, to amend the professional services agreement for engineering consulting services for the NSWTP Electrical Service Equipment Replacement project and to approve an increase in transaction amount from \$535,000 to \$682,295 for these services.

- Increase transaction amount from \$535,000 to \$682,295 to complete design phase
- Continue Professional Services Contract with Donohue & Associates, Inc.



An aerial photograph of a large industrial facility, possibly a refinery or chemical plant, with a semi-transparent blue overlay. The facility includes several large storage tanks, a complex network of pipes and walkways, and a large rectangular building. A yellow rectangular box highlights a specific area in the upper right, while three red rectangular boxes highlight a cluster of structures below it. The word "Questions?" is centered in white text.

Questions?