

CAPITAL PROJECT UPDATE: PUMPING STATION FORCE MAIN RELIEF PHASE 2

Commission Meeting
March 30, 2023

Madison Metropolitan Sewerage District





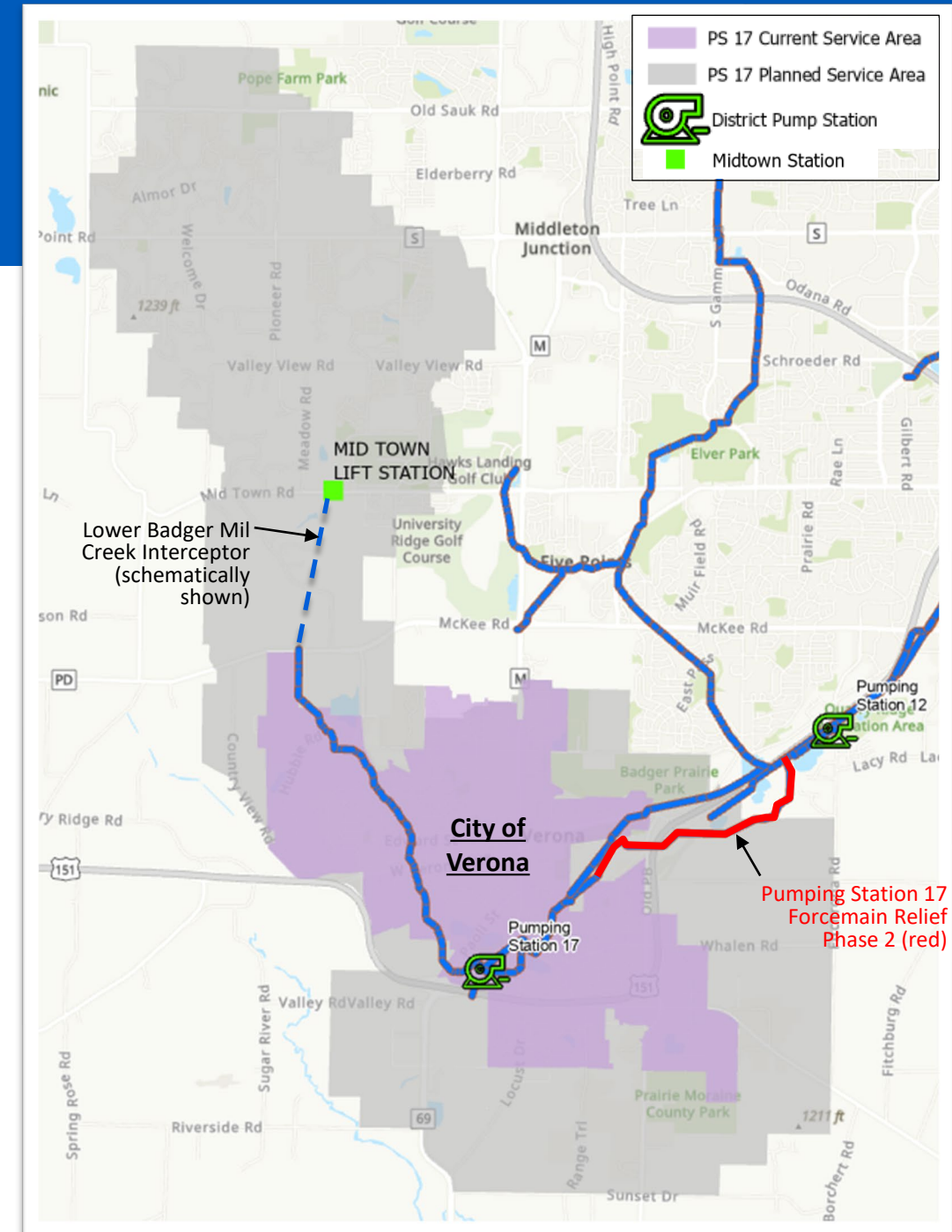
Agenda

- Where we have been?
Project Background
- Where are we now?
Design Update
- What's next?
Commission Next Steps

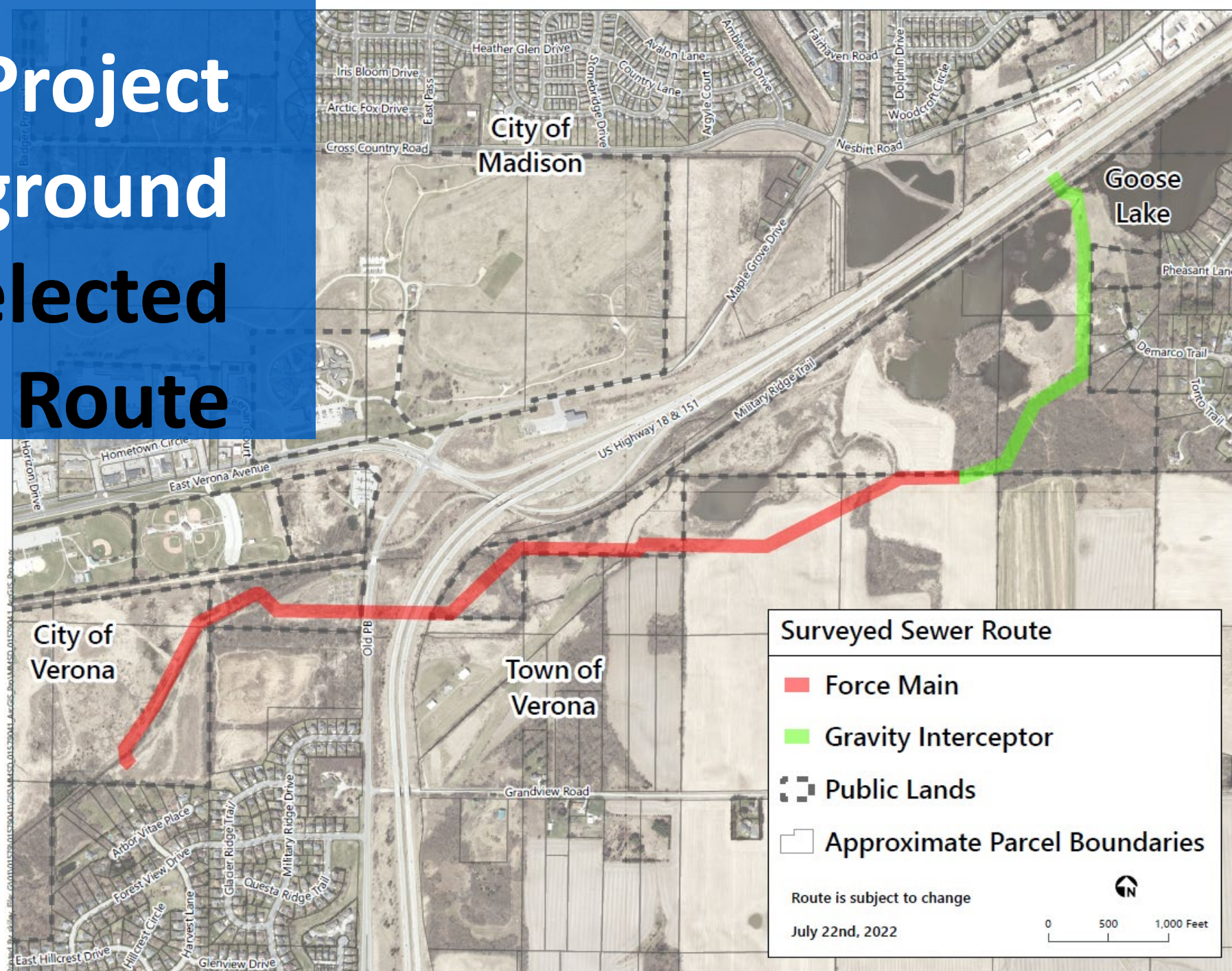
Project Background

Purpose

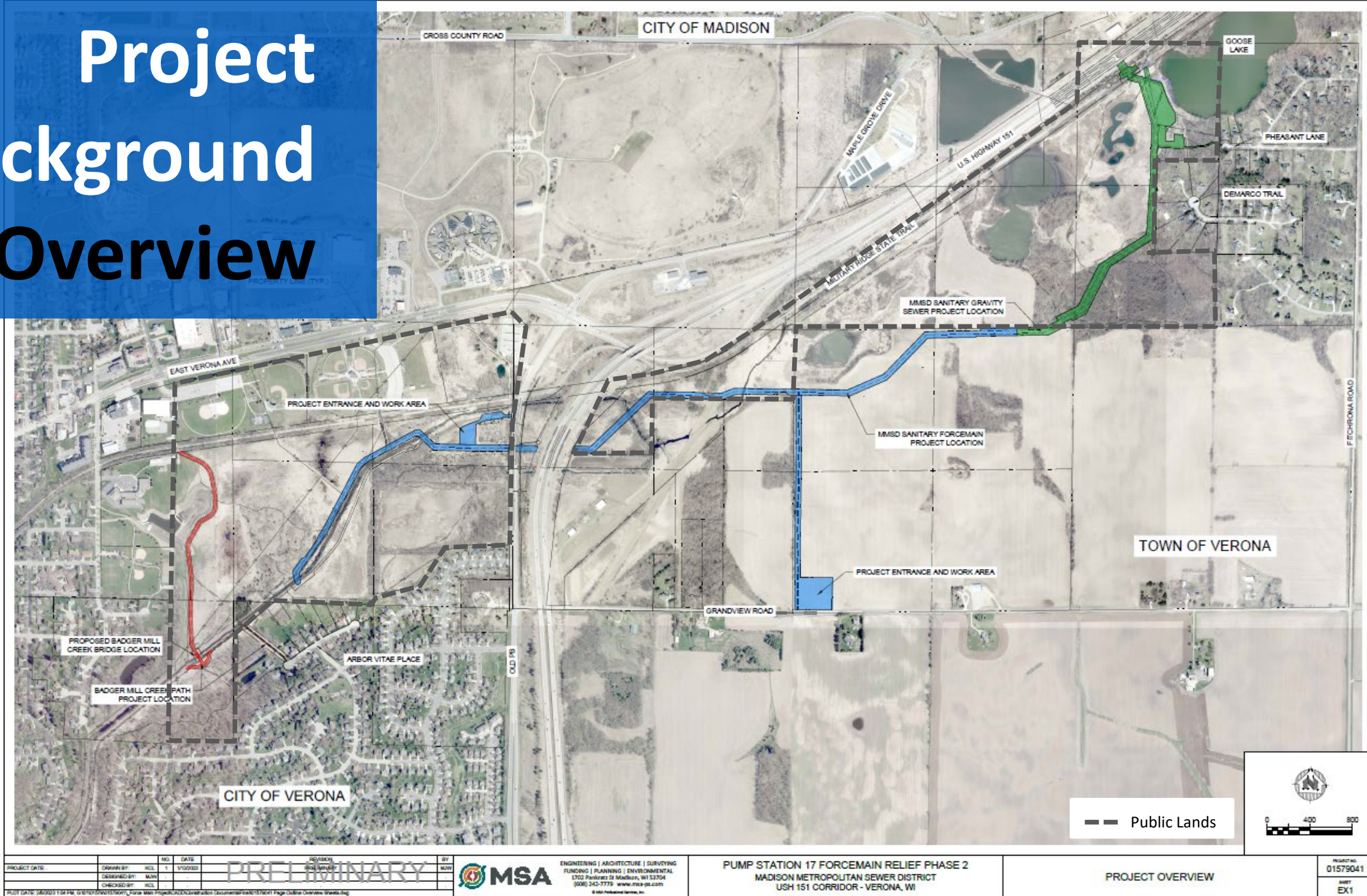
- Need: Capacity Based
- Related to:
 - Growth in LBMC drainage basin
 - Lower Badger Mill Creek Interceptor
 - City of Madison's Midtown Station
- PS17 Forcemain Relief Phase 1 Completed in 2021



Project Background Selected Route



Project Background Overview





Design Update

- **Completing Final Design**
- **Acquiring Easements**
- **Obtaining Permits**
- **Finalizing Agreements**
- **Assembling Contract Documents**



Wetland Permitting

- Completed the pre-permit steps and proceeding with best management actions to mitigate and restore post-construction.
- Anticipate purchasing wetland bank mitigation credits.
- Mitigation bank credits cost may total \$350,000 to \$450,000 – TBD by WDNR.



Agreements

- Two Anticipated:
 - City of Verona – paved path
 - Town of Verona – sewer work
- Why? Close physical proximity and timing overlap with City and Town projects
- Benefits for all involved for single joint construction contract, District to lead

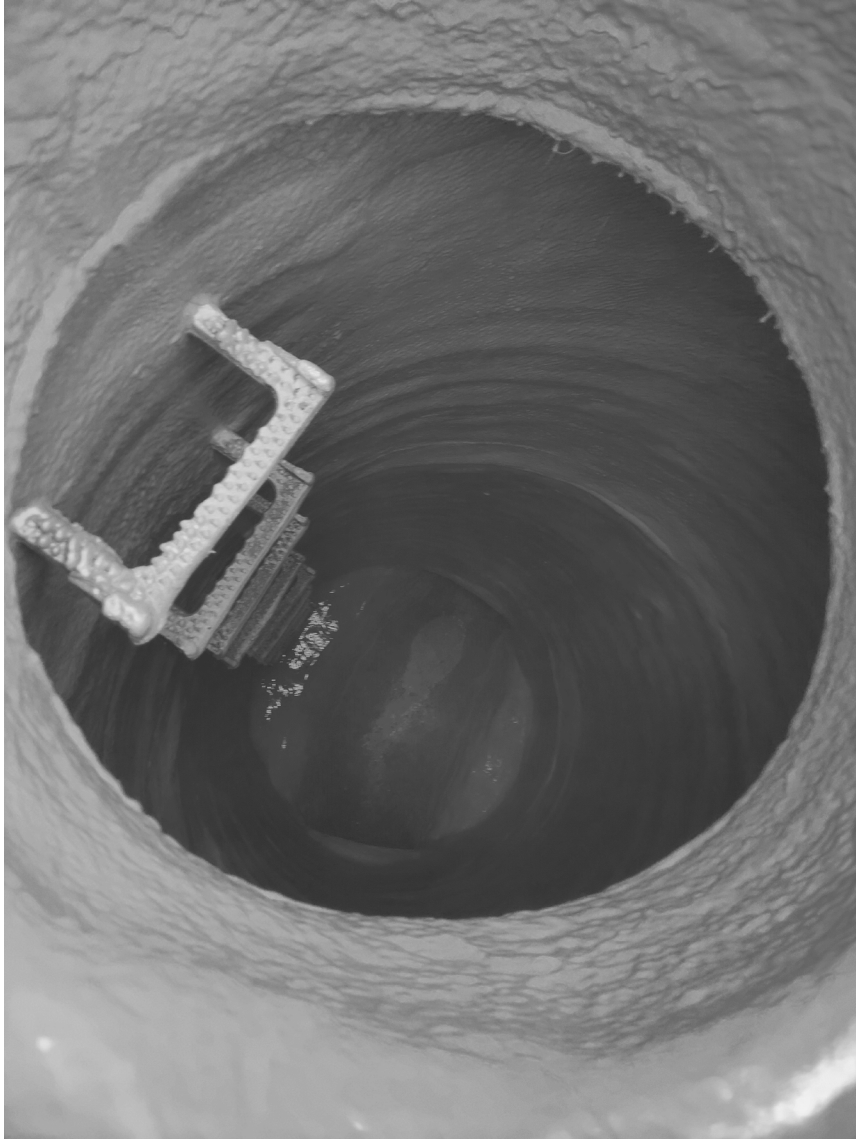
Madison Metropolitan Sewerage District



Agreements – What's in it for the District?

- City of Verona Agreement: Complete Path
 - Create reliable forcemain access for District
 - Access maintained by City of Verona
- Town of Verona Agreement: Relocate Facilities
 - District needs to relocate facilities in future regardless
 - Reduces vulnerable infrastructure & reduces I&I
 - Safer monitoring manhole for District staff
 - Safer overland access for District staff





Commission Next Steps

1. **Approval of Transaction Amount: Wetland Mitigation Banking Payment**
2. **Authorize Agreement: City of Verona**
3. **Authorize Agreement: Town of Verona**
4. **Sewer Extension Approval**
5. **Review of Bids and Award of Contract**



Questions?

Madison Metropolitan Sewerage District

