

Capital Project Update: Lower Badger Mill Creek Interceptor – Phases 5-6

Commission Meeting
1/23/23



Outline

- Where we have been?
- Where are we going?
- What are the challenges ahead?



Background



- Related to PS 17/PS 17 FM Relief Phase 2
- Related to growth in LBMC drainage basin
- Design completed to Midtown-2006
- North of Midtown - By Madison – 2012-2016
 - various temp lift stations, Midtown Road station remains)



What has already been built?

- Phase 1 – 2006
- Phase 2 – 2008
- Phase 3 – 2014.
- Phase 4 – 2018
- Phase 5 & 6 – PD to Midtown
the missing link.

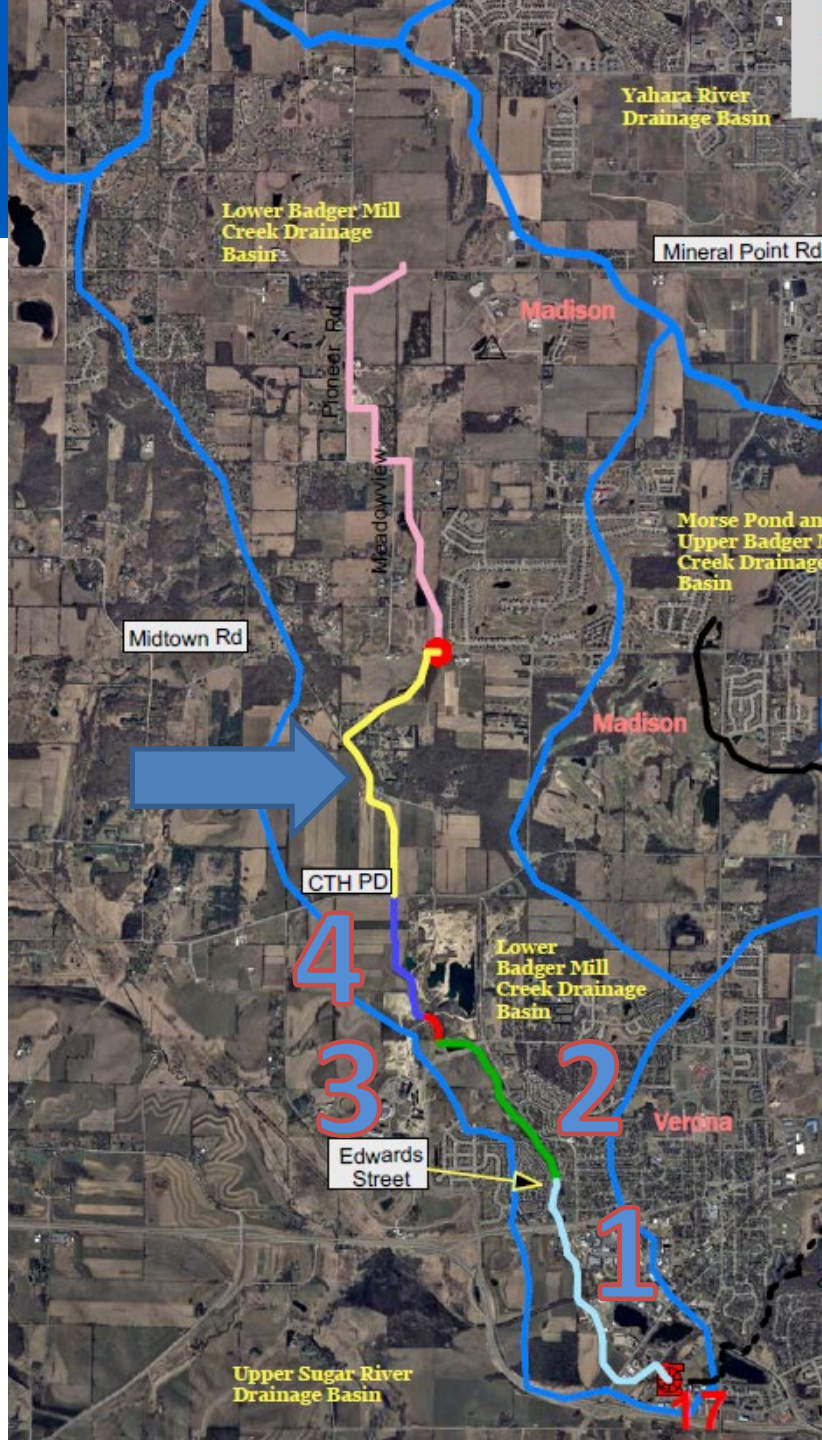


Figure 1: LBMCI Phases 5 & 6



What is getting built next?

- Phase 5 – Anticipated construction 2023
 - Marty farm area - Ardent Glen development in City of Verona
- Phase 6 – Anticipated construction 2024
 - Along Shady Oak lane, through existing residential development and ag lands





What are we working on now?

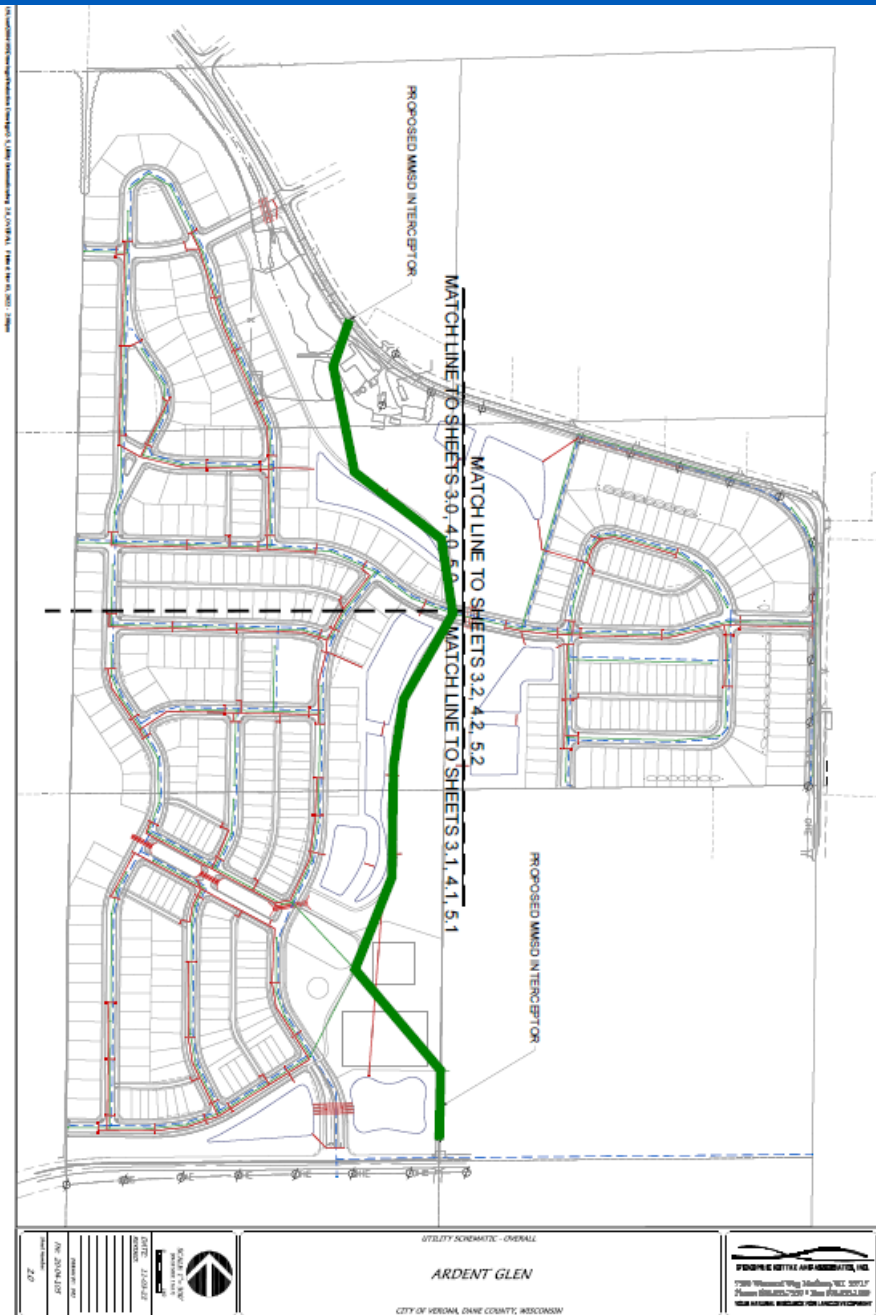
- Phase 5 and 6 in design
- Review + refresh needed from 2005 design
- Currently refining route/profile
- Working with Veridian on Phase 5
- Planning for Phase 6 in 2024
- Held in person open house December 2022



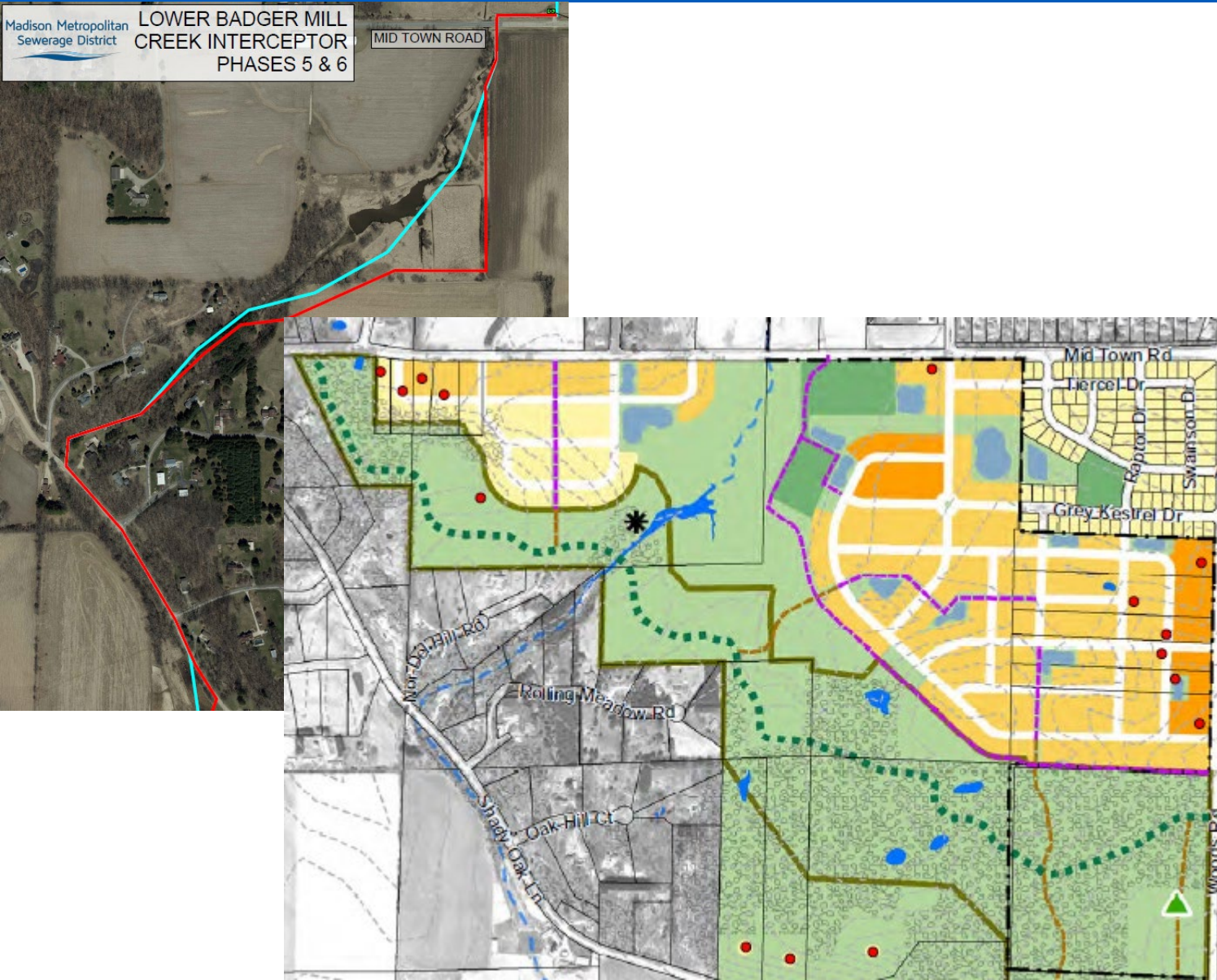
Phase 5

- Ardent Glen
- Working with the Developer
- Bike path access
- Will need “mini project” this spring to deal with relaying some pipe at PD to accommodate Verona’s PD schedule.

Madison Metropolitan Sewerage District



Phase 6



- Along Shady Oak, through backyards, and agricultural to the north
- Coordination with City of Madison Shady Wood n'hood plan
- Coordination with possible continuation of Ice Age Trail



What will be some challenges ahead?



- Route needs to be here
 - Dictated by topography
 - This is the “missing link” – connecting to existing to north and to south
- Steep, wooded terrain, “flashy” stream
- Richardson’s cave, Karst formations, well concerns
- General opposition of neighbors
 - Easements on private land needed



Questions?

Madison Metropolitan
Sewerage District

Visitor

Madison Metropolitan
Sewerage District

Madison Metropolitan Sewerage District

Madison Metropolitan Sewerage District