



September 13, 2022

**Subject: Pump Station 17 Force Main Relief Phase 2  
Potential Improvements Survey Synopsis**

**Introduction**

The following letter is intended to share the results of the Pump Station 17 Force Main Relief Phase 2 potential improvements survey with the public.

**Background**

The Madison Metropolitan Sewerage District conducted an online public survey from August 24<sup>th</sup> through September 7<sup>th</sup> on potential improvements for the project corridor. The survey was conducted via Google Forms and included two attachments. A total of 11 potential improvements were presented for public input, see Attachment 1. The improvements shown were based upon input from Dane County, City of Verona, Town of Verona, Ice Age Trail, and adjacent residents.

In Attachment 2, four options for the Badger Mill Creek (Creek) paved path and Ice Age Trail were shown. These four options included the paved path on various sides of the Creek. These four options presented the Ice Age Trail in different locations, but primarily being relocated to the south of the Creek as was Ice Age Trail staff's preference at the time.

**Intent**

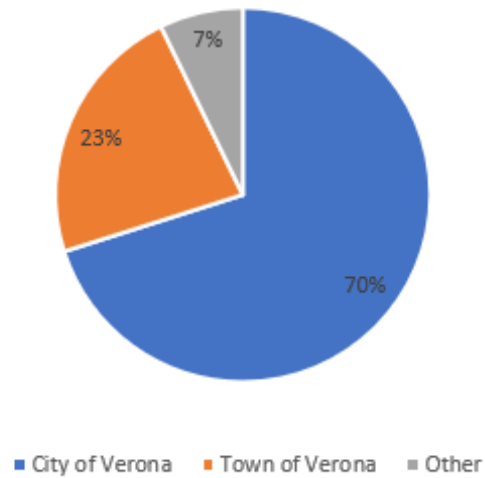
The intent of the public survey is to provide input to the design team on potential improvements to be implemented. In the survey it was noted: "improvements to be selected based on public interest, available community involvement, stakeholder input, available resources, and feasibility."

**Results**

The survey received 109 responses. Results of the survey were reviewed by the District, City of Verona, Dane County, Town of Verona, and Ice Age Trail. The results of the survey are presented in the following pages.

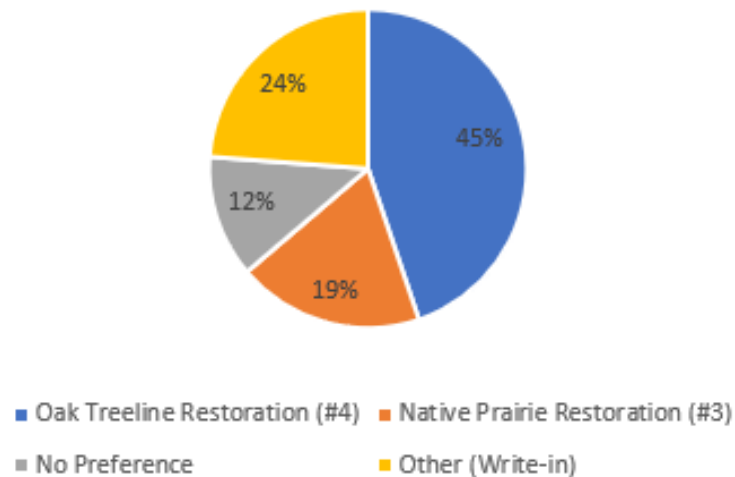
1. Most survey respondents reside in City of Verona. See Figure 1 below.

**Figure 1:** In which municipality do you reside?



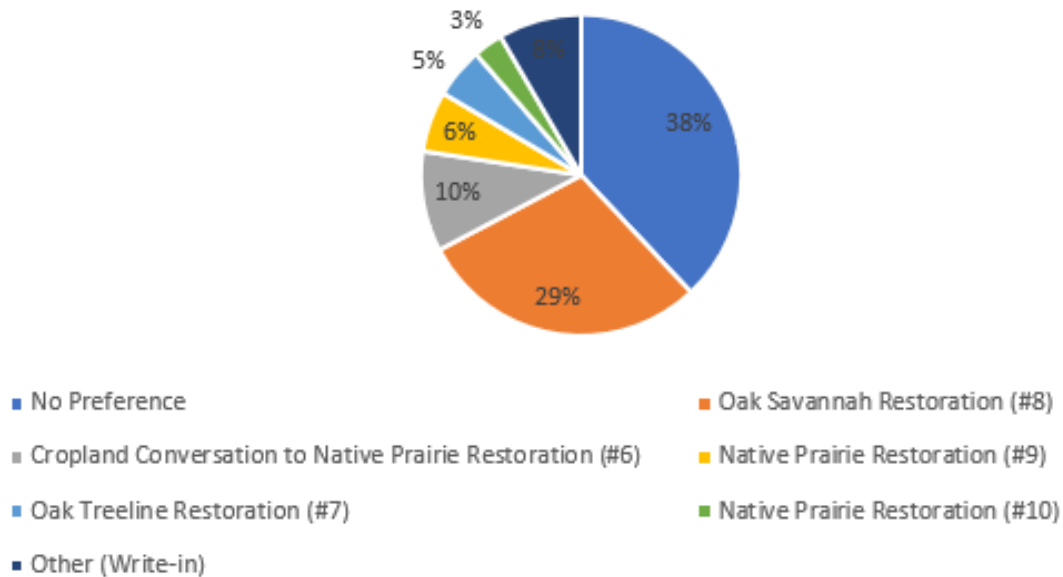
2. In the Arbor Vitae Place area, the Oak Tree Restoration (#4) improvement was preferred by most survey respondents. See Figure 2 below.

**Figure 2:** In the Arbor Vitae Place area, which restoration improvement do you like best?



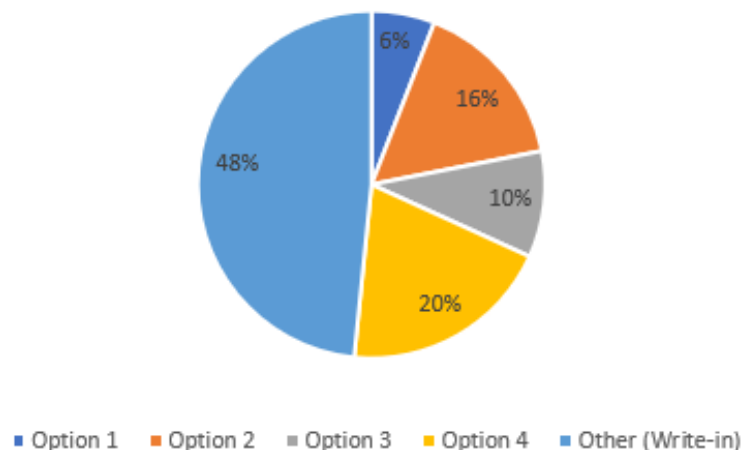
3. In the Goose Lake Conservancy area, no preference received the most votes followed by the Oak Savannah Restoration (#8) improvement. See Figure 3 below.

**Figure 3:** In the Goose Lake Conservancy, which restoration improvement do you like best?



4. Close to half of the survey respondents preferred a different paved path and Ice Age Trail option and did not vote for any of the Options 1 through 4. See Figure 4 below.

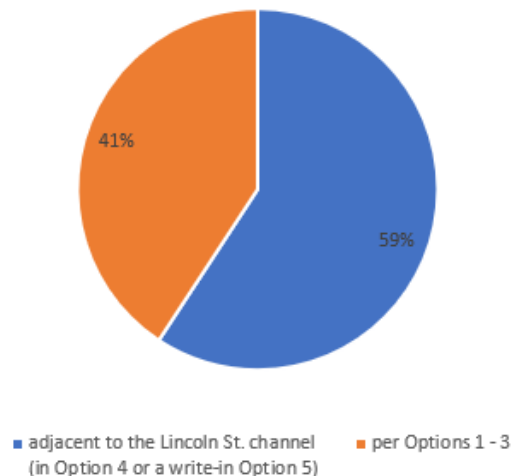
**Figure 4:**  
For the paved path & Ice Age Trail realignment, overall,  
which option do you like best?



5. Most respondents preferred the paved path to follow the Lincoln Street channel as presented in Option 4 or write-in Option 5. See Figure 5 below and Attachment #3 for Option 5.

**Figure 5 (inferred question):**

For the paved path & Ice Age Trail realignment,  
respondents prefer the paved path to:



### Next Steps

The District and Dane County will further discuss which improvements will move forward with this project. Both will continue coordination with Friends Groups. Improvements will be selected based on public interest, available community involvement, stakeholder input, available resources, and feasibility.

City of Verona Public Works Sewer & Water Committee will be presented the results of the survey regarding the paved path alignment selection which will include a practical alternatives analysis which is required to obtain construction permits. Options #1 through Option #5, see Attachment 3 will be presented. This meeting is tentatively scheduled for early October 2022. The intent is to have a decision at the Committee meeting in October for the paved path proposed alignment

Ice Age Trail Alliance staff in response to the survey comments are intending to align the Ice Age Trail as shown in Option #5.

As noted in the survey, selected improvements will be detailed in future project related public meetings.

### Closing

If you have any questions or concerns, please contact the District, who is the lead entity coordination. Thank you for your continued interest and input on this critical infrastructure project.



Rachel Feil, P.E. ENV SP  
Madison Metropolitan Sewerage District  
Project Engineer 2

Chris James  
Dane County  
Senior Landscape Architect

Theresa Nelson, P.E.  
Dane County  
Stormwater Engineer

Theran Jacobson, P.E.  
City of Verona  
Director of Public Works

W. Christopher Barnes, P.E.  
Town of Verona  
Director of Public Works

Chad DuChateau  
Ice Age Trail  
Director of Trail Operations

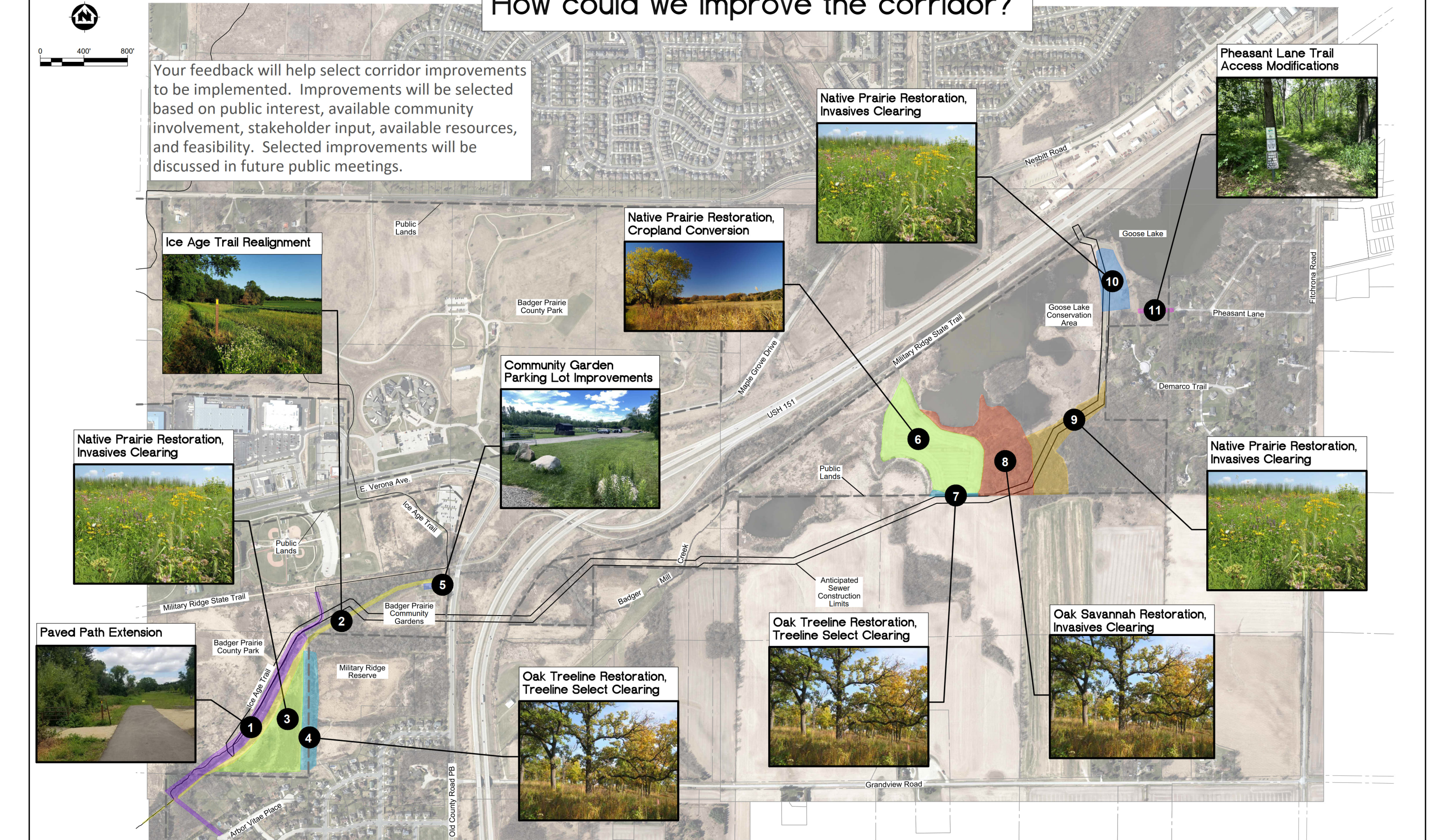
Encl: Attachment 1: Potential Improvements Overview Map

Attachment 2: Options #1 - #4 for the paved path and Ice Age Trail

Attachment 3: Option #5 (added)



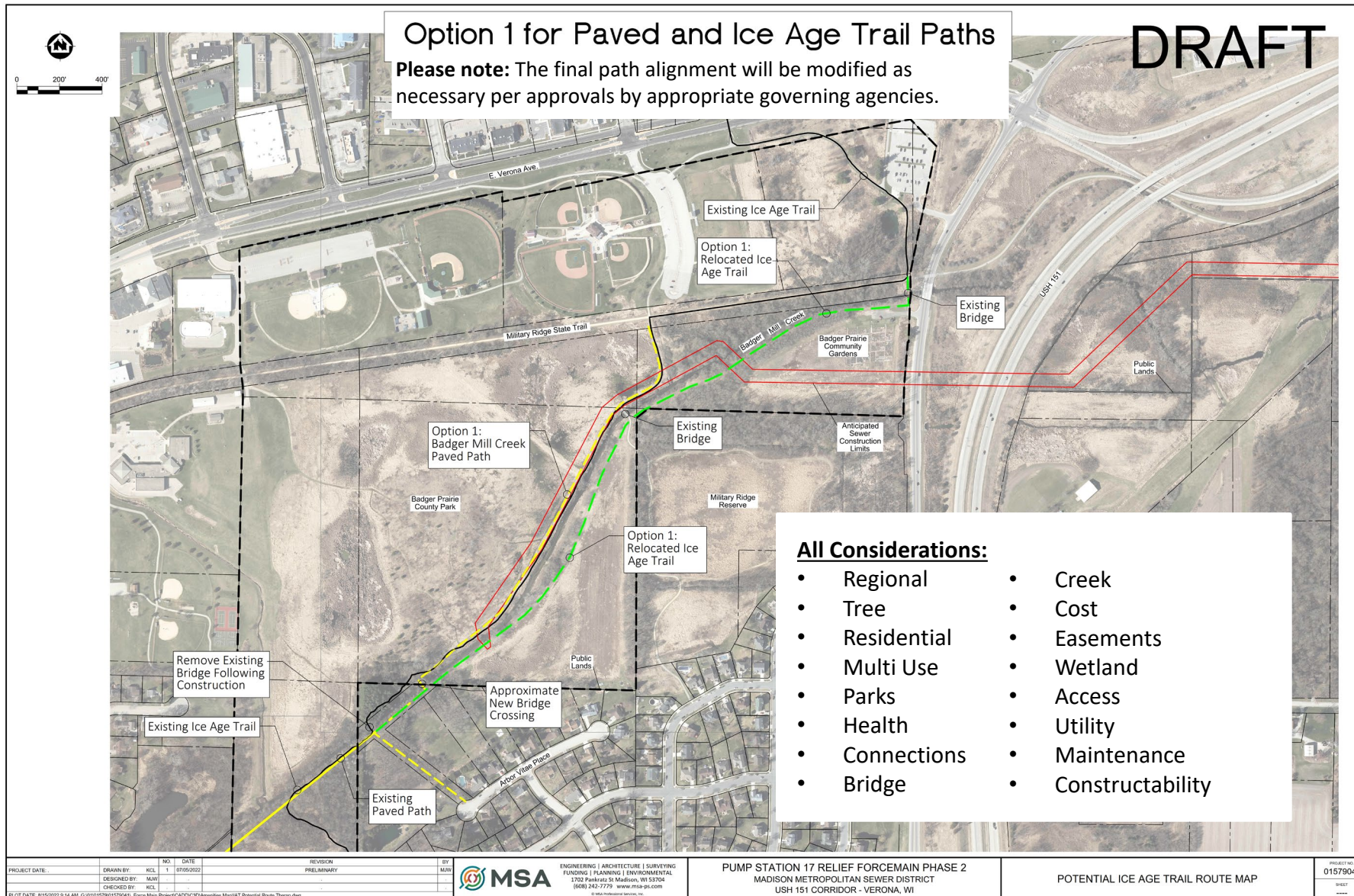
# How could we improve the corridor?





# Paved Path – Option 1

Please note - there are 4 options total presented in this PDF.



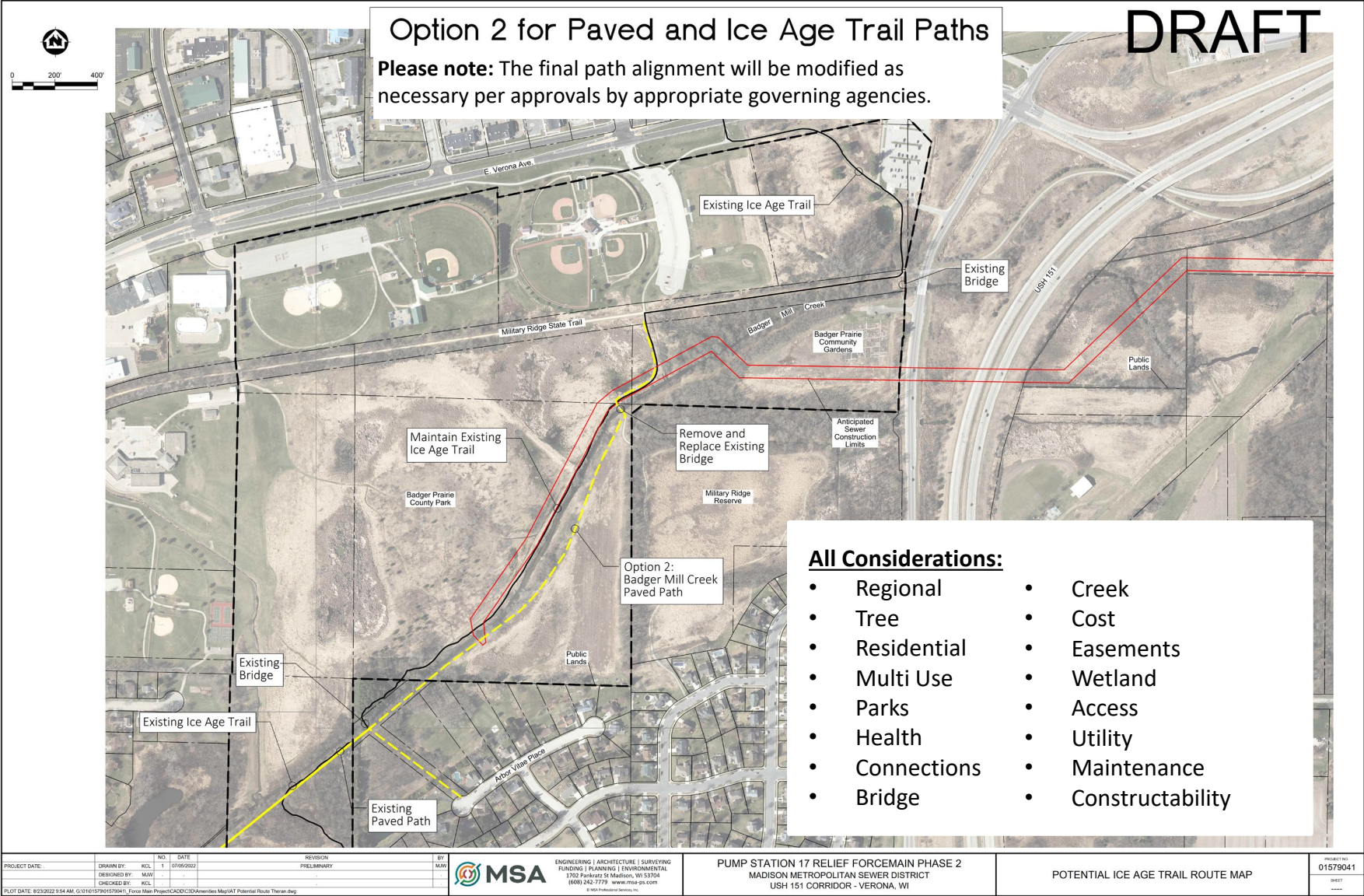
## Ice Age Trail National Scenic Trail

- One of only 11 National Scenic Trails in the US.
- A 1000-mile footpath that immerses users in the world-renowned Ice Age features of Wisconsin, meandering from St. Croix Falls, down to Janesville and up to Sturgeon Bay.
- Built and maintained entirely by volunteers, over 2000 across the state.
- Primary uses are hiking, walking, backpacking, snowshoeing and related educational activities.
- Strives to be a natural surface footpath, where it meets Paved trails designed for multi-use activities the hiker experience is impacted.



# Paved Path – Option 2

Please note - there are 4 options total presented in this PDF.



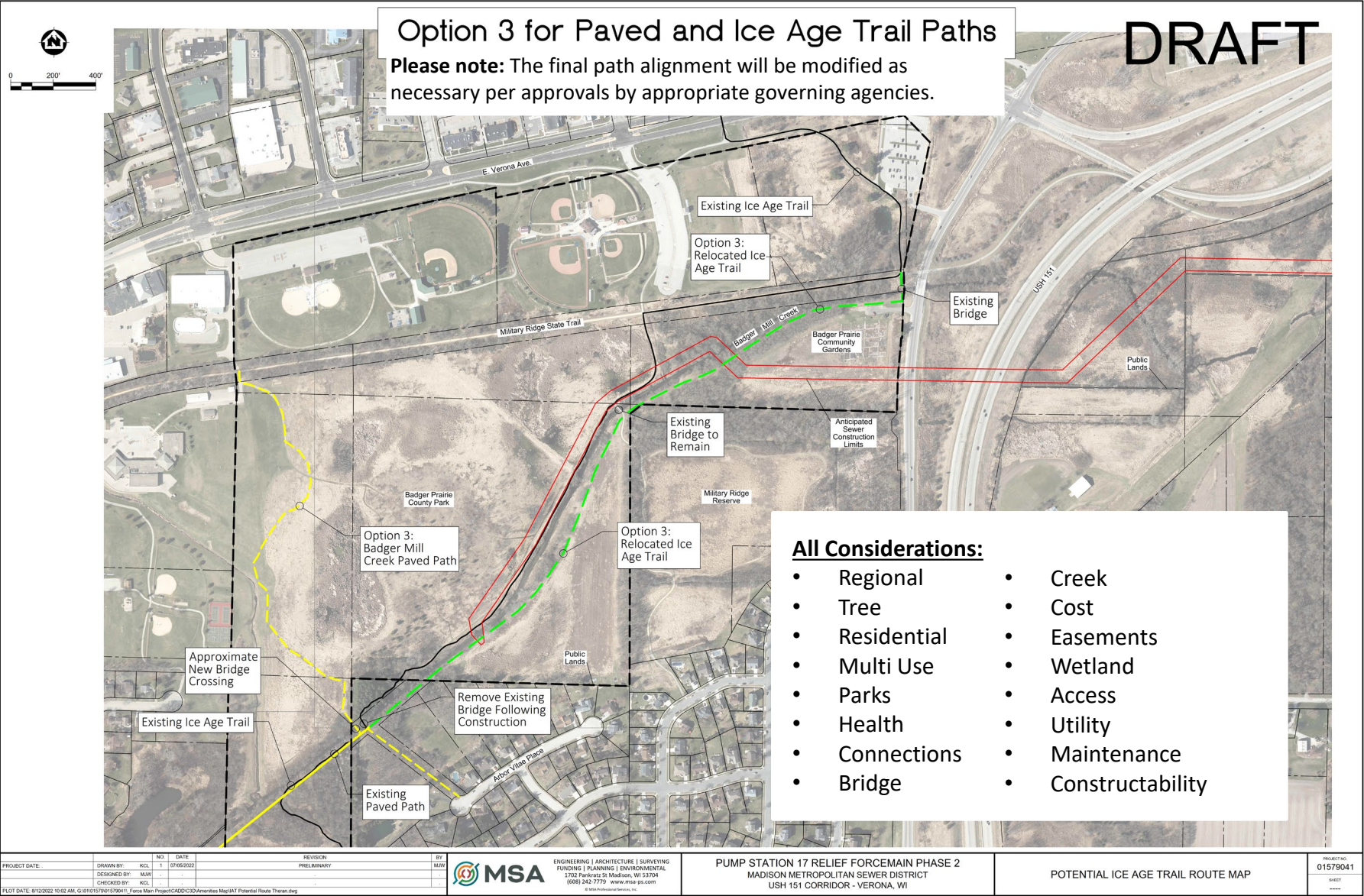
### Ice Age Trail National Scenic Trail

- One of only 11 National Scenic Trails in the US.
- A 1000-mile footpath that immerses users in the world-renowned Ice Age features of Wisconsin, meandering from St. Croix Falls, down to Janesville and up to Sturgeon Bay.
- Built and maintained entirely by volunteers, over 2000 across the state.
- Primary uses are hiking, walking, backpacking, snowshoeing and related educational activities.
- Strives to be a natural surface footpath , where it meets Paved trails designed for multi-use activities the hiker experience is impacted.



# Paved Path – Option 3

Please note - there are 4 options total presented in this PDF.



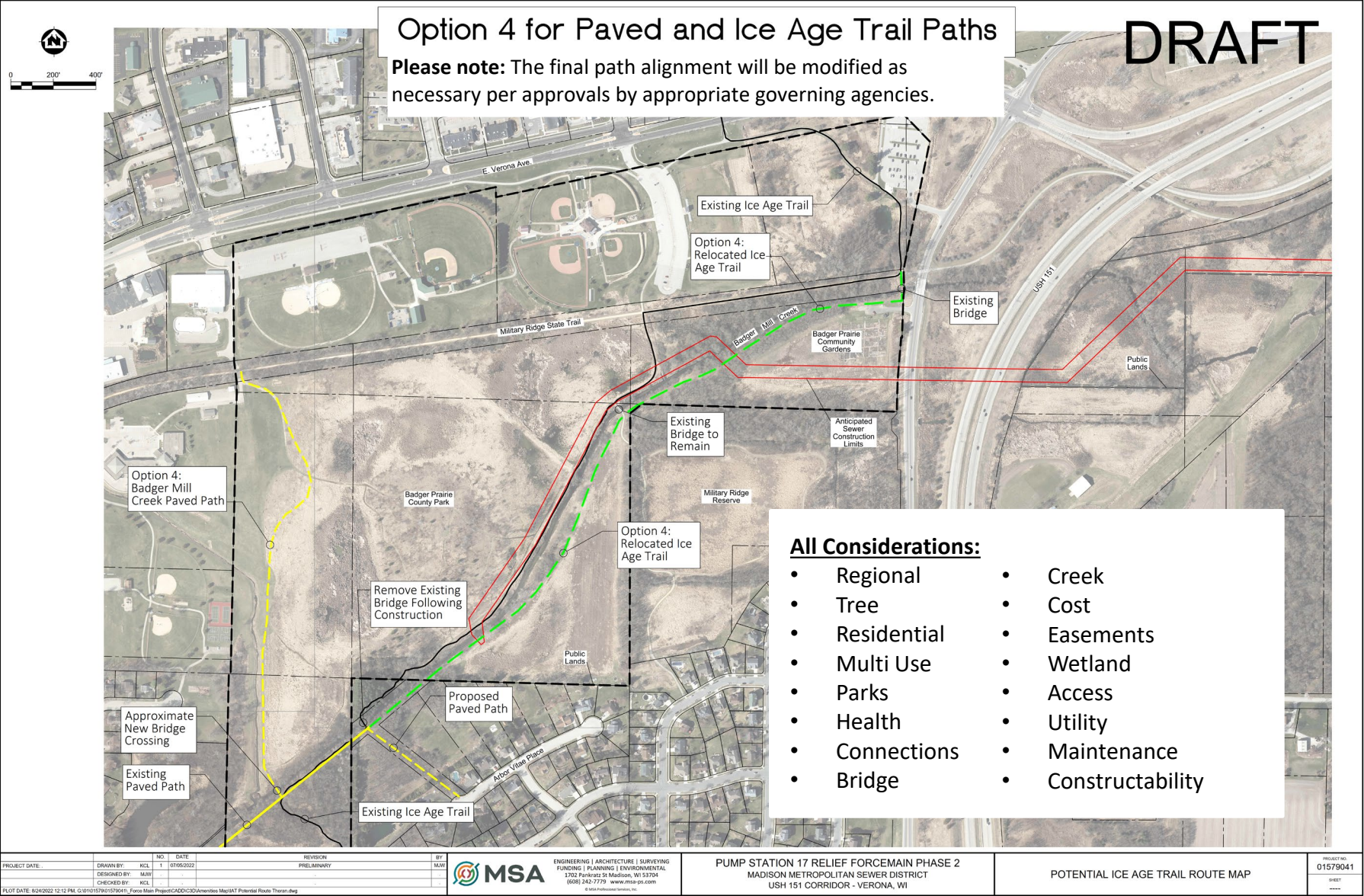
### Ice Age Trail National Scenic Trail

- One of only 11 National Scenic Trails in the US.
- A 1000-mile footpath that immerses users in the world-renowned Ice Age features of Wisconsin, meandering from St. Croix Falls, down to Janesville and up to Sturgeon Bay.
- Built and maintained entirely by volunteers, over 2000 across the state.
- Primary uses are hiking, walking, backpacking, snowshoeing and related educational activities.
- Strives to be a natural surface footpath , where it meets Paved trails designed for multi-use activities the hiker experience is impacted.



# Paved Path – Option 4

Please note - there are 4 options total presented in this PDF.



### Ice Age Trail National Scenic Trail

- One of only 11 National Scenic Trails in the US.
- A 1000-mile footpath that immerses users in the world-renowned Ice Age features of Wisconsin, meandering from St. Croix Falls, down to Janesville and up to Sturgeon Bay.
- Built and maintained entirely by volunteers, over 2000 across the state.
- Primary uses are hiking, walking, backpacking, snowshoeing and related educational activities.
- Strives to be a natural surface footpath , where it meets Paved trails designed for multi-use activities the hiker experience is impacted.



## OPTION 5: MODIFIED ICE AGE TRAIL

Ice Age Trail staff in response to the survey comments are intending to align the Ice Age Trail as shown in this option.

Please note the results of the survey will be presented to the City of Verona Public Works Sewer & Water Committee. The intent is to have a decision at the Committee meeting in October 2022 for the paved path proposed alignment.

