

# 2023 Proposed Operating Budget

September 15, 2022

Madison Metropolitan Sewerage District





2013

2018

2014

2019

2015

2020

2016

2021

2017

2022



GOVERNMENT FINANCE OFFICERS ASSOCIATION

*Distinguished  
Budget Presentation  
Award*

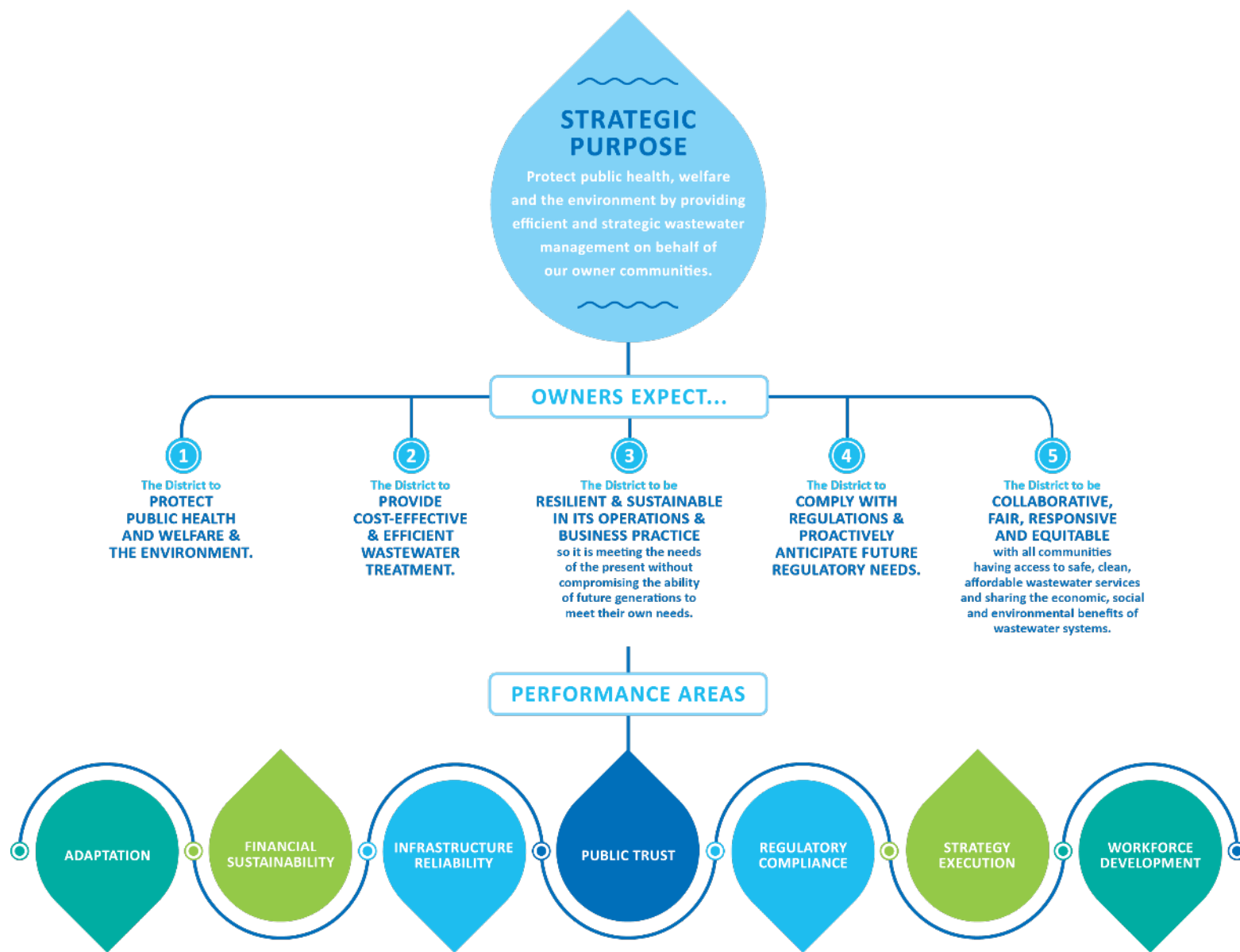
PRESENTED TO

Madison Metropolitan  
Sewerage District  
Wisconsin

*Jeffrey A. Casan*

Executive Director / CEO





# New District Strategic Plan



# Impact on Households

**\$432**

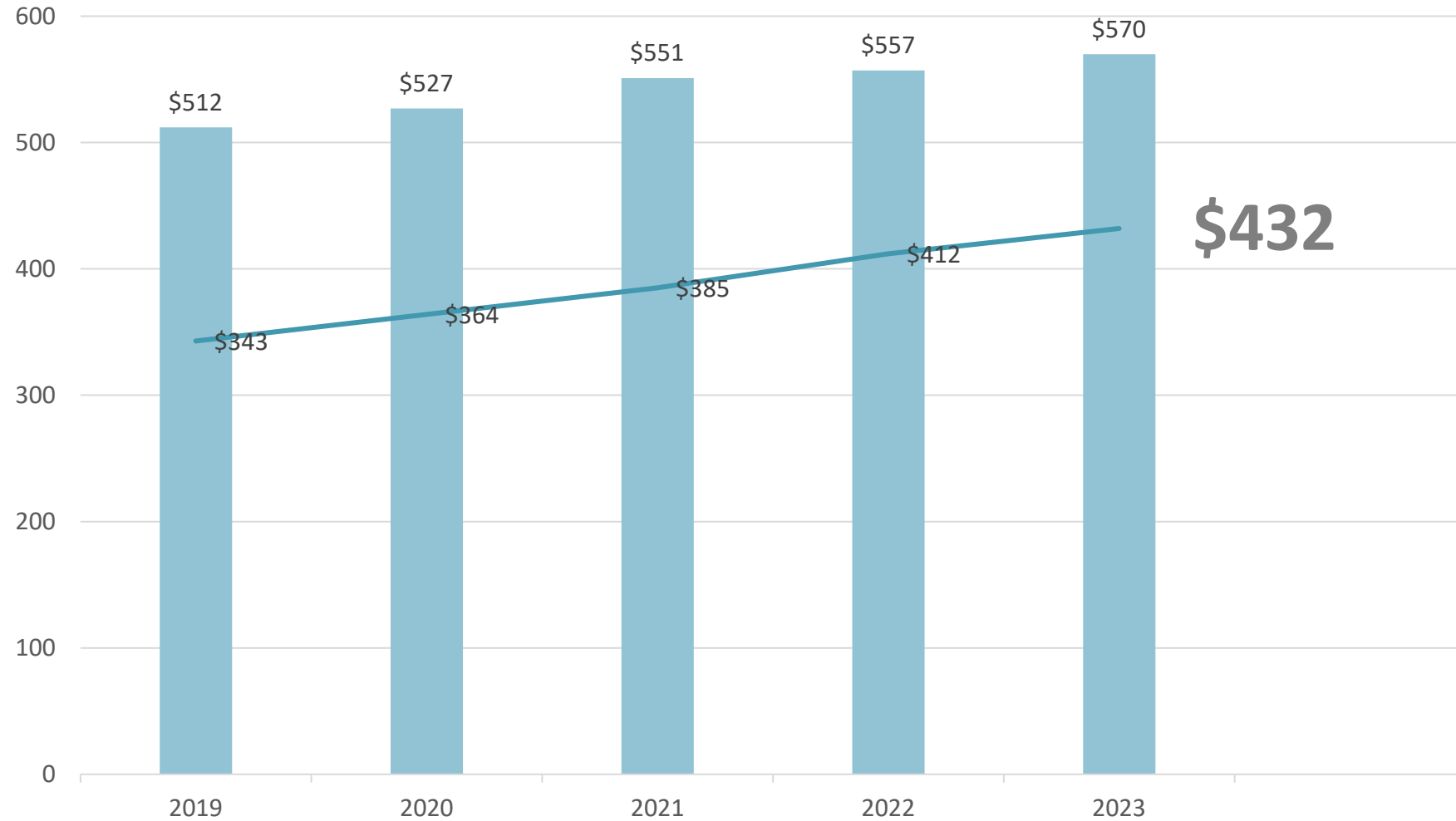
On average, per year

**\$2.83**

More per month



# National Service Charge Trends



NACWA 2022

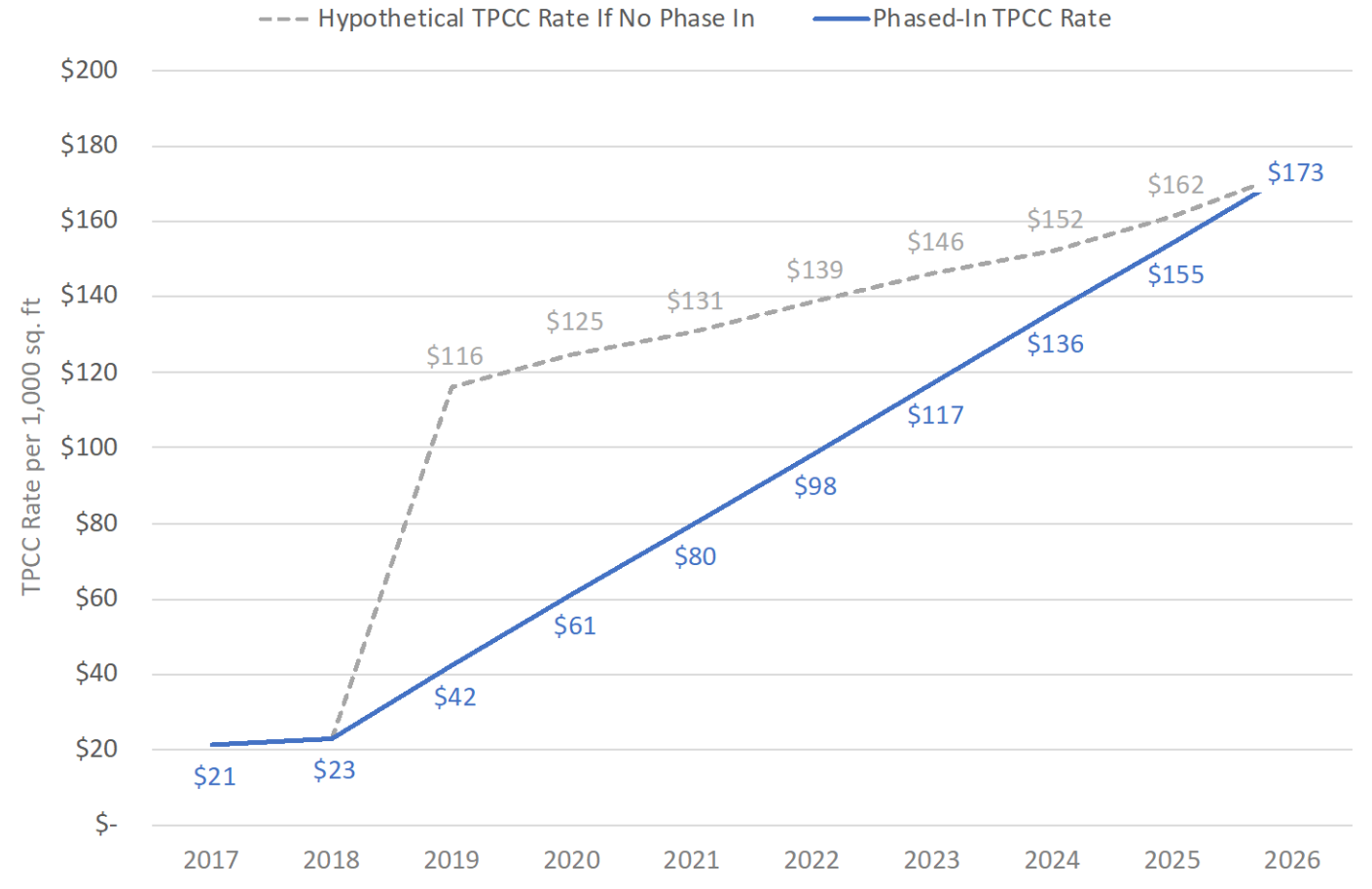
Madison Metropolitan Sewerage District



# Connection Charges

- Following the phase-in plan
- TPCC 30% increase
- CFCC 1.3% inflationary adjustment

**Treatment Plant Connection Charge — Rate Phase In**  
*Assumes 2.8% Annual Escalation in Costs*



*TPCC rate shown*  
*CFCC rates vary by basin*



# 2022 Budget

- Revenues
- Expenditures
- Reserves



# Budget Process

- Starting point
- Interests
- Holistic view







# 2023 Budget

- Service charge increase 8.9%
- Inflation trends
- Cash financing capital
- Investments





# 2023 Budget

Budget item	% increase	Amount
<b>Workforce</b>	3.25%	\$1.5 million
<b>Capital</b>	2.75%	\$1.3 million
<b>Operating needs</b>	2%	\$1 million
<b>IT</b>	0.75%	\$750,000

Amounts rounded



# Timeline



**September 22**

DCCVA meeting

**September 29**

Public hearing and deliberation

**October 13**

Commission deliberation and final direction

**October 27**

Commission adopts 2023 budgets and new rates

**November 1**

Customers notified of new rates

Madison Metropolitan Sewerage District



**Thank you!**  
**Questions?**

