

# Yahara Watershed Improvement Network (WINS)



# Yahara WINS



- Review: the What, Why, and Who of Yahara WINS
- Progress so far
- Ongoing watershed efforts



# What is Yahara WINS?



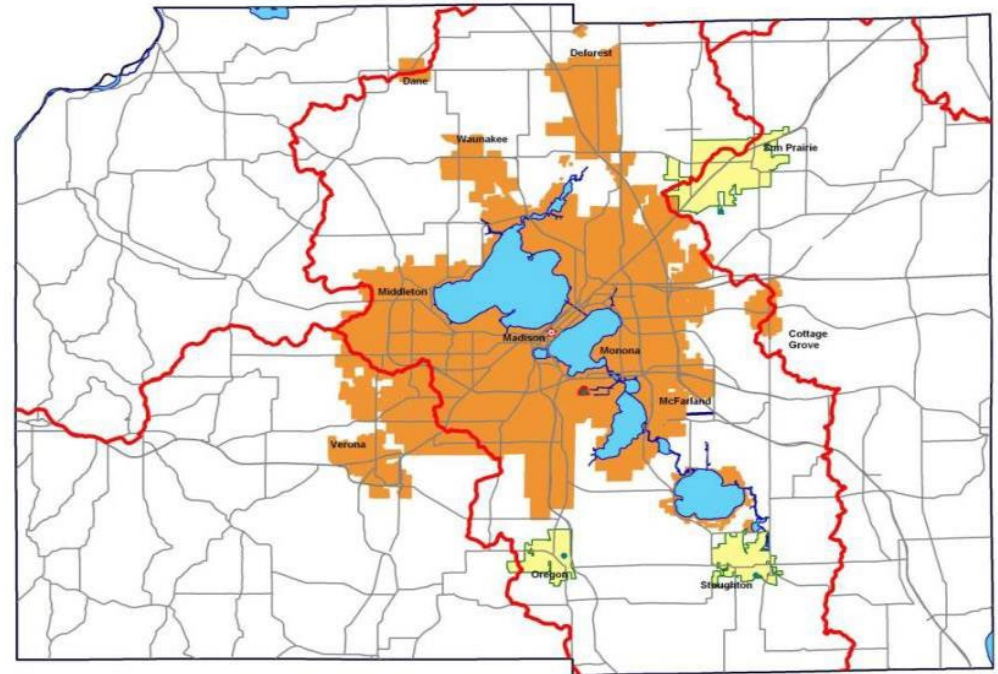
- Yahara WINS is an initiative to achieve clean water goals for the Yahara Watershed
  - Community partners collaborating on a strategy called **adaptive management**
    - All sources of phosphorus work together to reduce phosphorus runoff
    - More effective and less expensive than everyone working individually on separate solutions



# Why Yahara WINS?



## Rock River Total Maximum Daily Load (TMDL)



Madison Metropolitan Sewerage District



# Why Yahara WINS?



## TYPICAL MMSD PHOSPHORUS CONCENTRATIONS



# Who is Yahara WINS?



## Intergovernmental Agreement (IGA) Signatories

### **Towns**

Blooming Grove  
Burke  
Cottage Grove  
Dunn  
Middleton  
Westport

### **Villages**

Cottage Grove  
DeForest  
Maple Bluff  
McFarland  
Shorewood Hills  
Waunakee  
Windsor

### **Cities**

Fitchburg  
Madison  
Middleton  
Monona  
Stoughton  
Sun Prairie

### **Others**

Madison Metropolitan  
Sewerage District  
Village of Oregon  
Wastewater Treatment  
Plant  
Stoughton Utilities  
UW-Madison  
Wisconsin Department of  
Natural Resources

## Interested Parties

Clean Lakes Alliance  
**Yahara Pride Farms**  
River Alliance of Wisconsin  
**U.S. Geological Survey**  
U.S. EPA  
**Madison Gas & Electric**  
Yahara Lakes Association  
**Dane County**  
Friends of Pheasant Branch  
Wisconsin Department  
of Agriculture, Trade and  
Consumer Protection  
Friends of Badfish Creek  
**Rock County**  
**Columbia County**  
**Rock River Coalition**

**Bold** = Partner that has a  
funding agreement with Yahara  
WINS.

## IGA Executive Committee Members

### ***Voting Members***

President: Martin Griffin,  
Madison Metropolitan  
Sewerage District  
Vice President: Tom Wilson, Town  
of Westport  
Secretary: Greg Fries, City of  
Madison  
Treasurer: Jeff Rau, Village of  
Oregon  
At-large member: Judd Blau,  
Village of DeForest

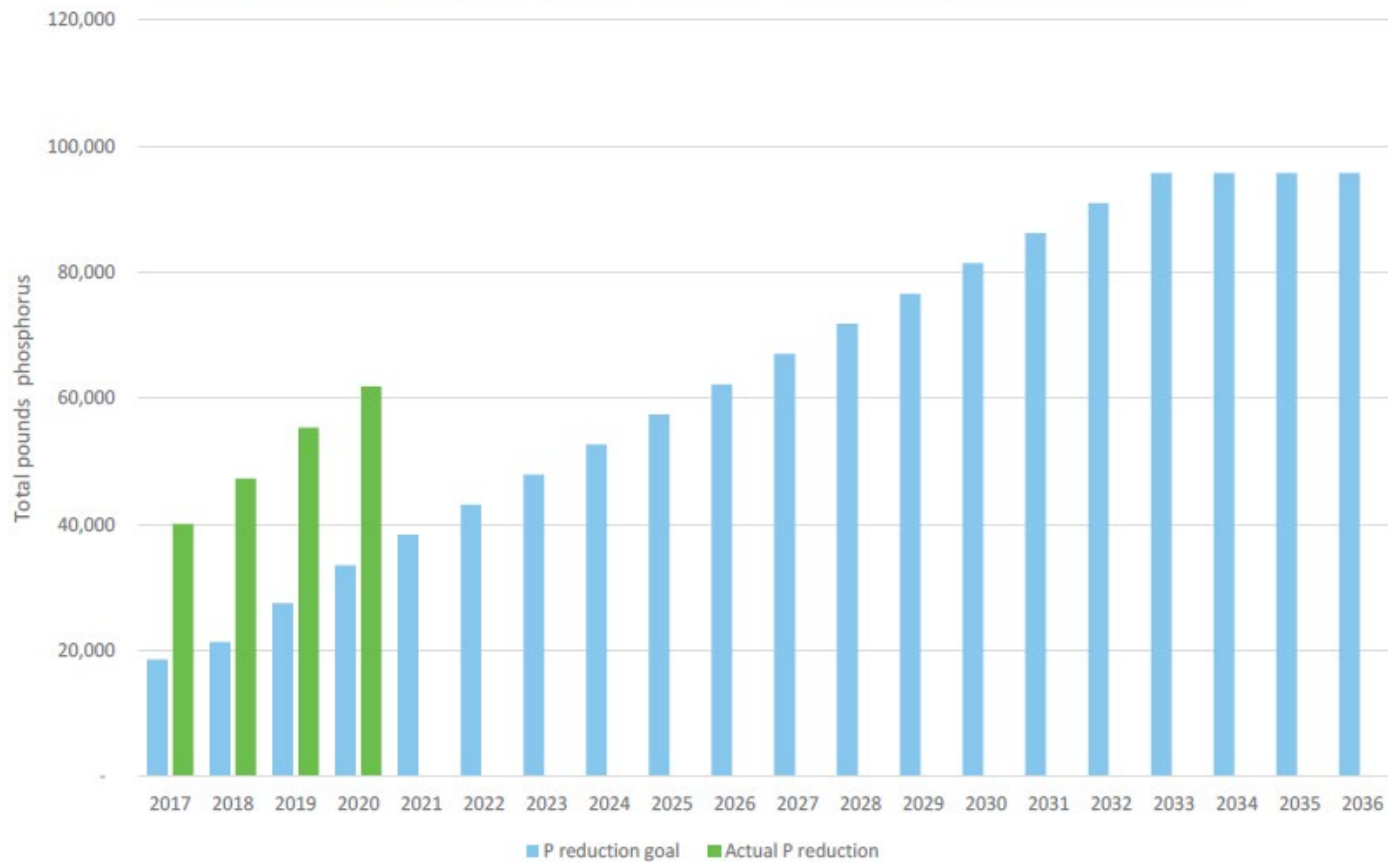
### ***Non-voting Advisory Members***

Laura Hicklin, Dane County  
Bob Uphoff, Yahara Pride Farms  
James Tye, Clean Lakes Alliance

# Yahara WINS progress



P Reduction Goal and Actual Annual P Reductions by Yahara WINS



# Yahara WINS progress



## 2021 PHOSPHORUS REDUCTIONS

**2021 REDUCTION  
GOAL:**

38,290 POUNDS

**REPORTED 2021  
REDUCTION:**

88,854 POUNDS

- Majority of reported pounds in 2021 are annual pounds
- Working to better align the various partner P accounting methods



The Yahara Watershed is divided into eight areas, called reaches, that correspond to the water bodies that receive that area's runoff and smaller tributary streams. They're defined by the phosphorus and sediment budget for the area called the Total Maximum Daily Load (TMDL).

# REDUCTIONS BY TMDL REACH

All reductions in this map are in pounds.

**DORN CREEK**  
(TMDL REACH 63)  
Projected phosphorus reduction, 2021: 820  
Actual reported: 8,304

**PHEASANT BRANCH CREEK**  
(TMDL REACH 62)  
Projected phosphorus reduction, 2021: 3,661  
Actual reported: 5,289

**NINE SPRINGS CREEK**  
(TMDL REACH 65)  
Projected phosphorus reduction, 2021: 1408  
Actual: 544

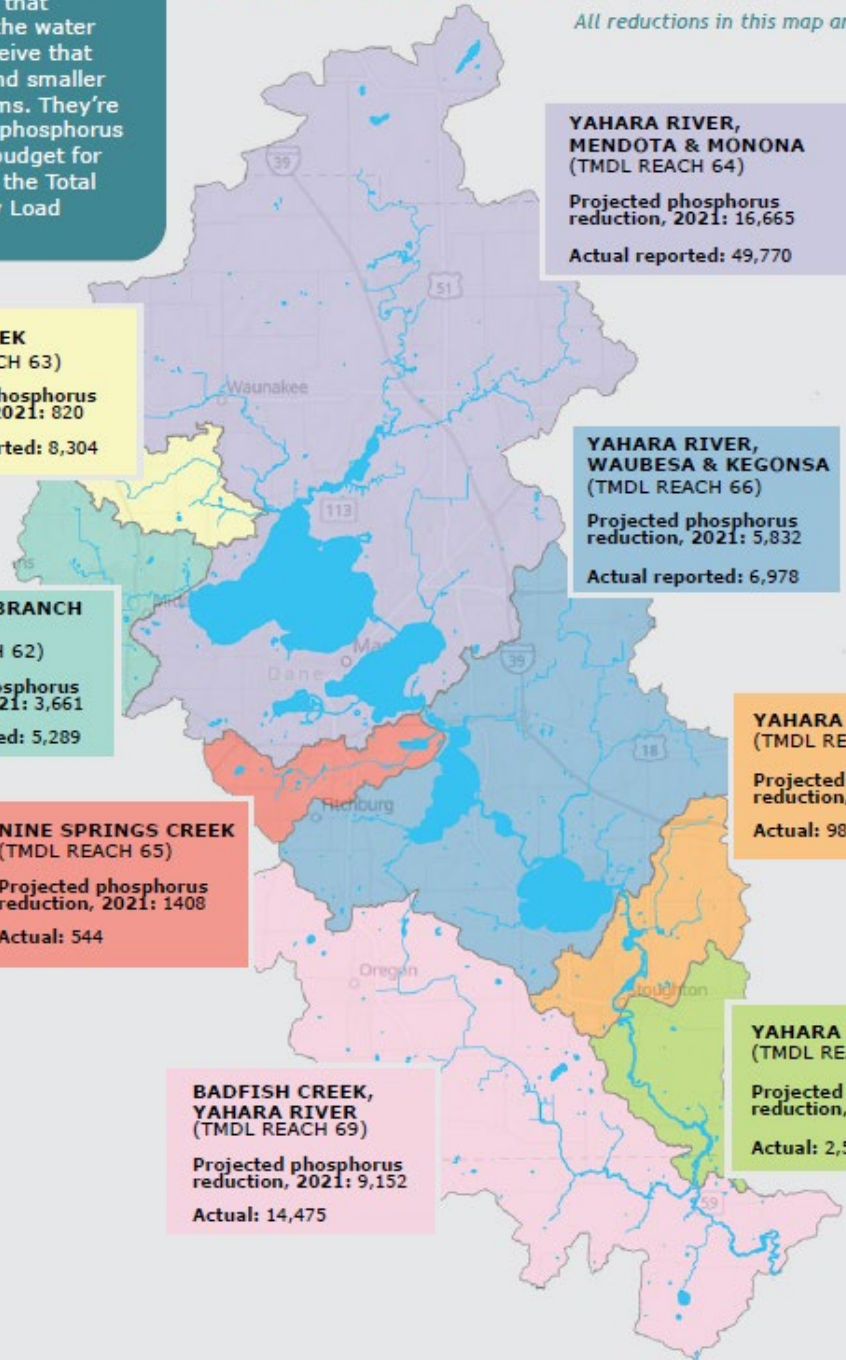
**BADFISH CREEK, YAHARA RIVER**  
(TMDL REACH 69)  
Projected phosphorus reduction, 2021: 9,152  
Actual: 14,475

**YAHARA RIVER, MENDOTA & MONONA**  
(TMDL REACH 64)  
Projected phosphorus reduction, 2021: 16,665  
Actual reported: 49,770

**YAHARA RIVER, WAUBESA & KEGONSA**  
(TMDL REACH 66)  
Projected phosphorus reduction, 2021: 5,832  
Actual reported: 6,978

**YAHARA RIVER**  
(TMDL REACH 67)  
Projected phosphorus reduction, 2021: 15  
Actual: 987

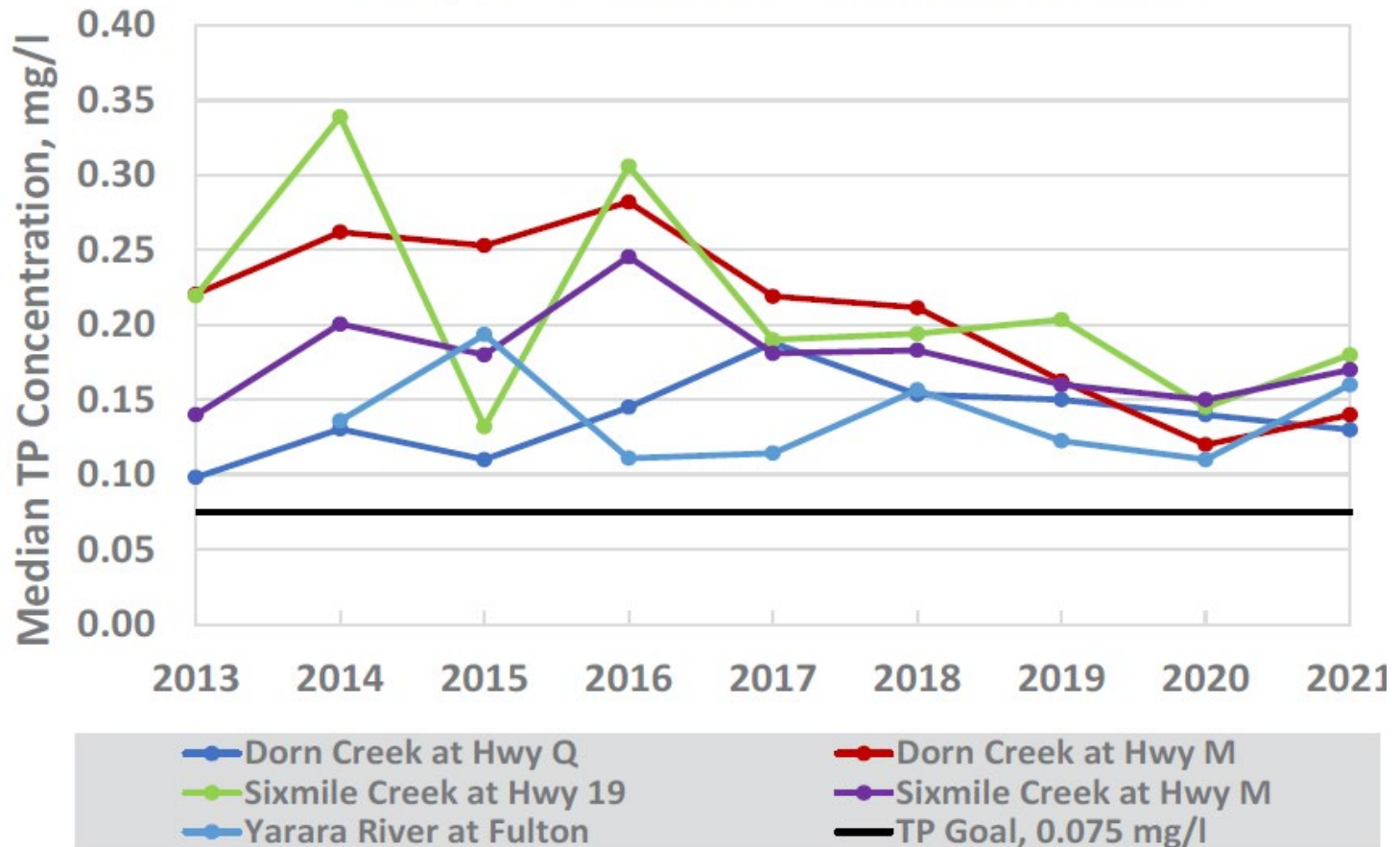
**YAHARA RIVER**  
(TMDL REACH 68)  
Projected phosphorus reduction, 2021: 737  
Actual: 2,507



# Yahara WINS progress



Median TP Concentrations  
May-Oct on or near 15th of each month



# Watershed Efforts

























# Watershed Efforts



## Soil Health and Nutrient Availability Plots



A group of ducks is captured in a dynamic scene at a water treatment facility. Several ducks are splashing in the water in the foreground, while others are in flight, crossing a concrete wall. The background shows more of the facility's circular basins and a building under a clear sky.

Thank you!

[www.yaharawins.org](http://www.yaharawins.org)

Kim Meyer, Watershed Programs Coordinator  
[kimm@madsewer.org](mailto:kimm@madsewer.org), 608-334-6259

Madison Metropolitan Sewerage District

The logo for the Madison Metropolitan Sewerage District, featuring a stylized white wave graphic.