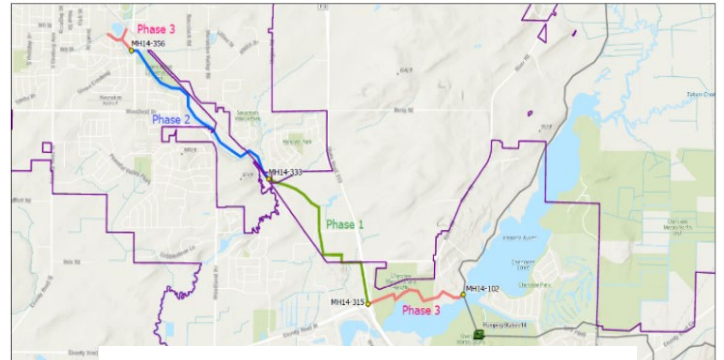


Northeast Interceptor (NEI) Waunakee Extension Capacity Improvements Phase 1 Project

Construction Update: 2/06/2025

BACKGROUND:

- MMSD's NEI Waunakee Extension Capacity Improvement Projects will provide additional capacity for the growing areas of Dane, Waunakee and Westport. Phase 1 provides relief and replacement sewers from the Yahara Heights County Park to the south end of the Savannah Village Subdivision.
- [Phase 1 Location and Route.](#)



NEI – WE Capacity Improvement Overview



Pipe and Manhole Connection

WORK:

- [Construction Progress and Location Map](#)

- **Current Work:**

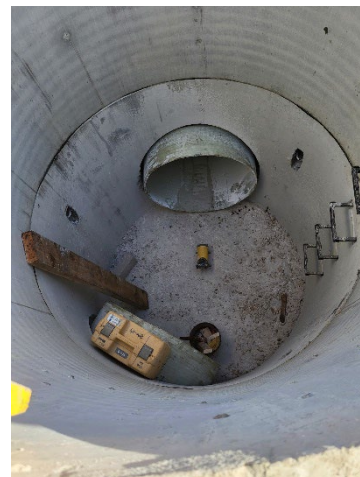
- Manhole and interceptor pipe placement through Kennedy Farm Fields
- Dewatering for pipe and manhole placement

- **Future Work:**

- Trenchless construction under STH 113 at Kennedy Dr.
- Kennedy Drive closure to place dewatering, erosion control, pipe and manholes and repave the road
- Final restoration of work areas to begin in Spring/Summer.



Cast-In-Place Concrete Structure at North Connection to the Existing Interceptor



Inside of an Installed Manhole

TRAFFIC IMPACTS:

- **STH 113:** Traffic Restrictions are currently in place:
 - o On going NB STH 113 shoulder closures
 - o Daily NB STH 113 outside lane closures from 7am to 4pm (when work requires)

- **River Road @ STH 113:**
 - o Permanent Restoration Closure – *Summer of 2025*
 - *Scheduled for mid-June 2025 for 1-2 weeks*
 - *Detour Route (see figure below):*
 - *STH 113 to River Rd: STH 113 to Bong Rd (east) to River Rd*
 - *River Rd to STH 113: River Rd to Bong Rd (west) to STH 113*
 - o Permanent Restoration Closure – *Summer of 2025*

- **Kennedy Drive:** – *To Begin March 3, 2025, and last for 4 – 5 Months*

River Road Closure Detour Route

