



April 15, 2022

**Adjacent Resident  
Address**

**Delivery Method:  
USPS Mail**

**Subject: Pump Station 17 Rehabilitation & Force Main Relief Phase 2  
Route Selection**

Dear Resident,

The Madison Metropolitan Sewerage District has selected a route for the Pump Station 17 Rehabilitation & Force Main Relief Phase 2 project. The route was selected by the project design team after gaining input at the February 23, 2022 meeting, reviewing public feedback, consulting with stakeholder groups, and weighing considerations. Thank you for helping us make this selection.

A variation of Alternate 4 has been selected, the preliminary route map is enclosed. Based on feedback, we have modified the selected route. A few comments on this route:

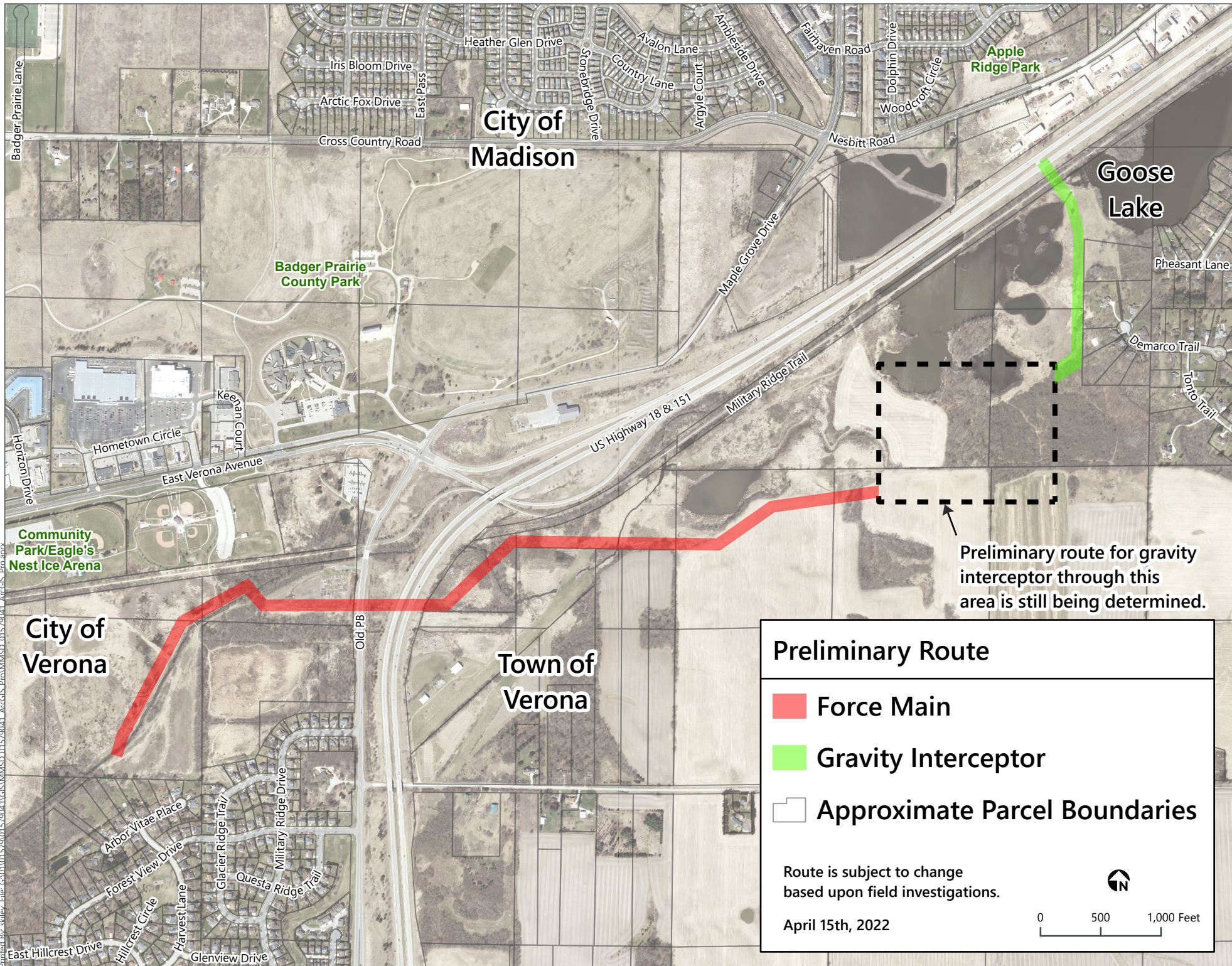
- With this route, the force main was adjusted to cross to the northside of Badger Mill Creek to preserve the existing trees in the Military Ridge Reserve before heading east.
- This route will detour the Military Ridge Trail. The design team will coordinate with trail organizations to minimize impacts. These will be discussed in future public meetings.
- This route will detour the Ice Age Trail. The design team will work with the Ice Age Trail Alliance on impacts and restoration. These will be discussed in future public meetings.
- The design team understands disruption to natural areas is a concern. Plans to minimize and restore these areas will be presented in future public meetings. Specifically, the route in the Goose Lake Conservancy area is still being determined to minimize impacts to mature trees.

As we proceed with this corridor in surveying, the route is subject to change. Join us at the next public meeting in summer 2022 for an update. Please visit the project webpage or sign up to receive notifications: <https://www.madsewer.org/project/pumping-station-17-force-main-relief-phase-2/>

If you have questions or concerns, please reach out. Thank you continued interest and input on this critical infrastructure project.

Sincerely,  
Rachel Feil, P.E. ENV SP  
Project Engineer I

Encl: Preliminary Route Map 4/15/2022 (reverse)




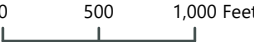
Preliminary route for gravity interceptor through this area is still being determined.

**Preliminary Route**

- Force Main
- Gravity Interceptor
- Approximate Parcel Boundaries

Route is subject to change based upon field investigations.

April 15th, 2022

Printed By: skilew, File: G:\01\01579\01579041\GIS\MMMSD\_01579041\_ArcGIS\_Pro\MMMSD\_01579041\_ArcGIS\_Pro.aprx