

Yahara WINS

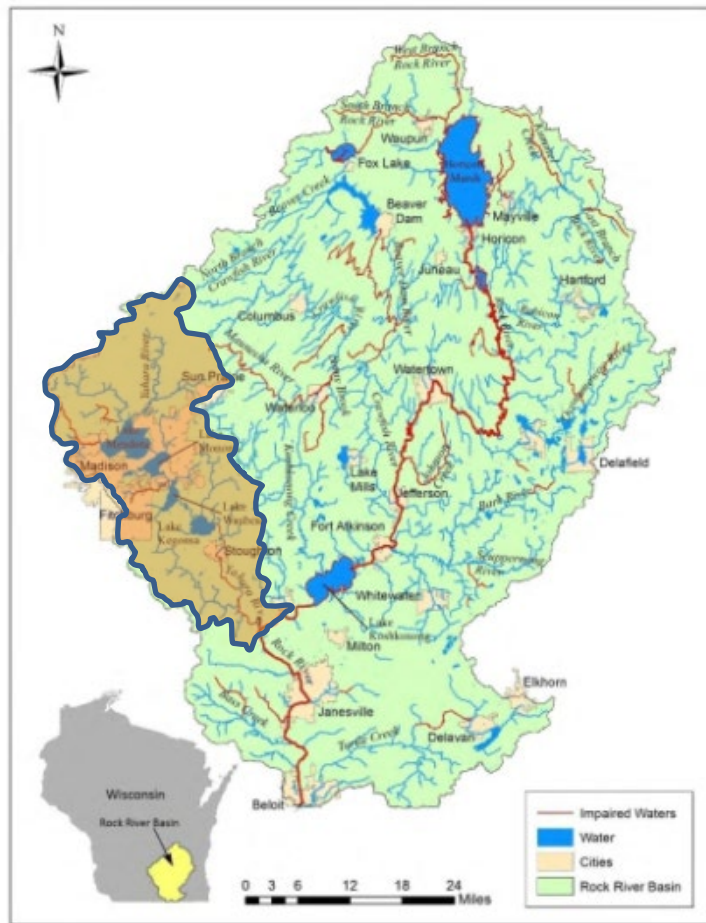
Working For The Watershed

Compliance through Collaboration

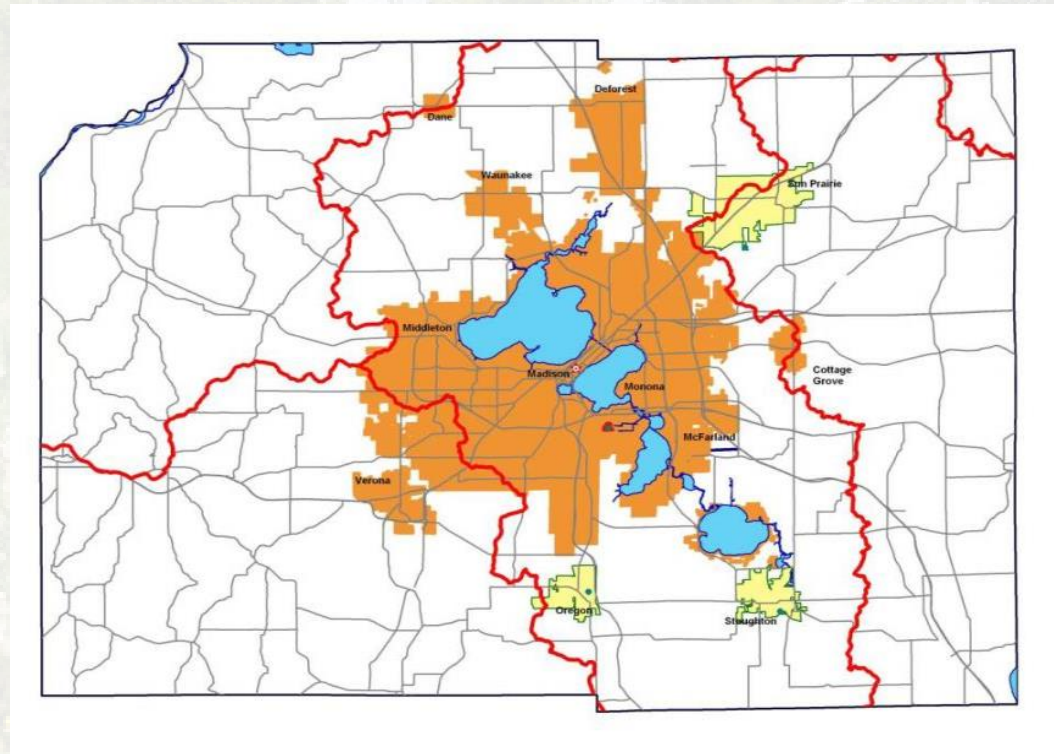


Madison Metropolitan Sewerage District

Yahara Watershed

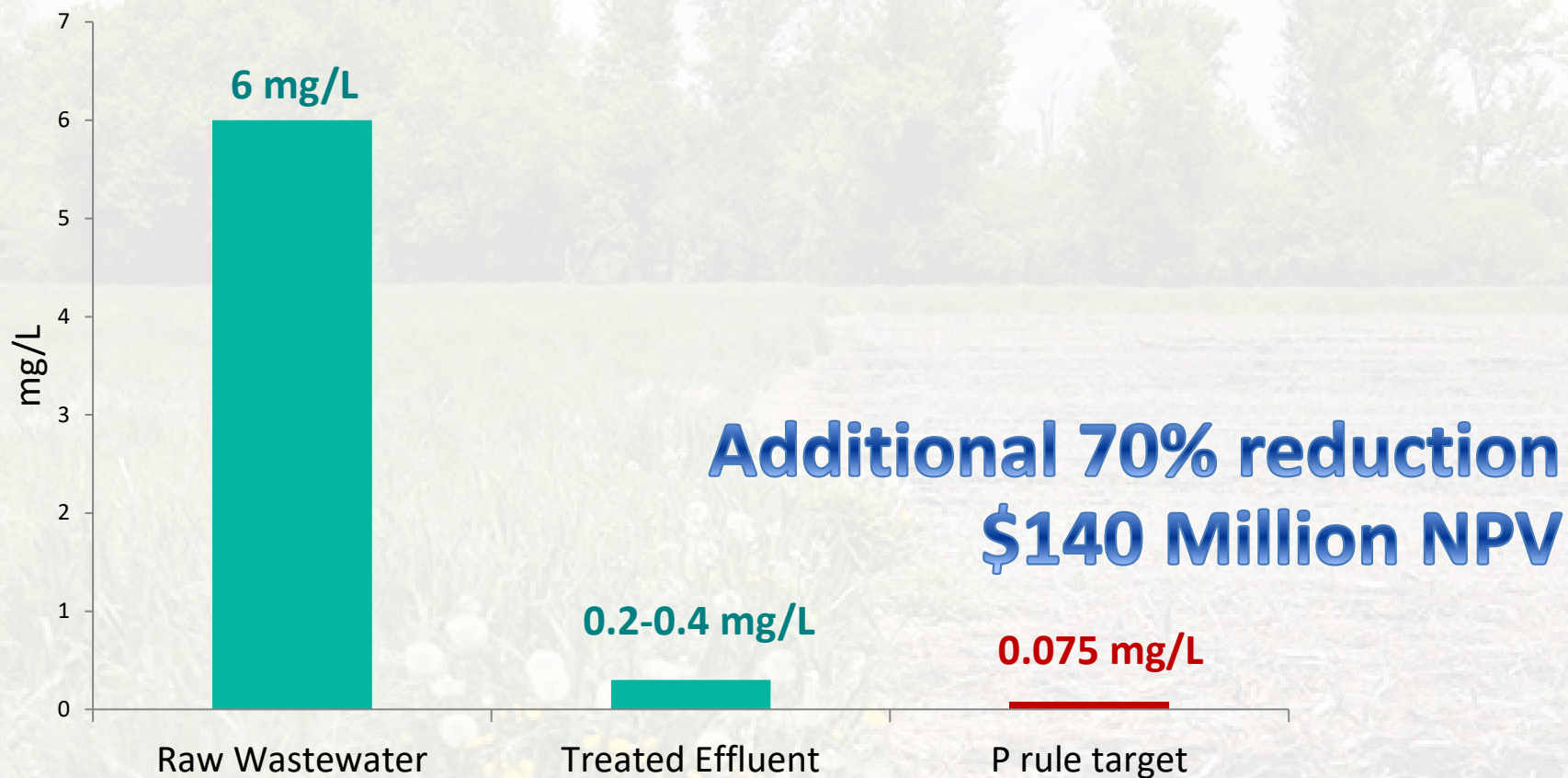


Rock River Total Maximum Daily Load (TMDL)

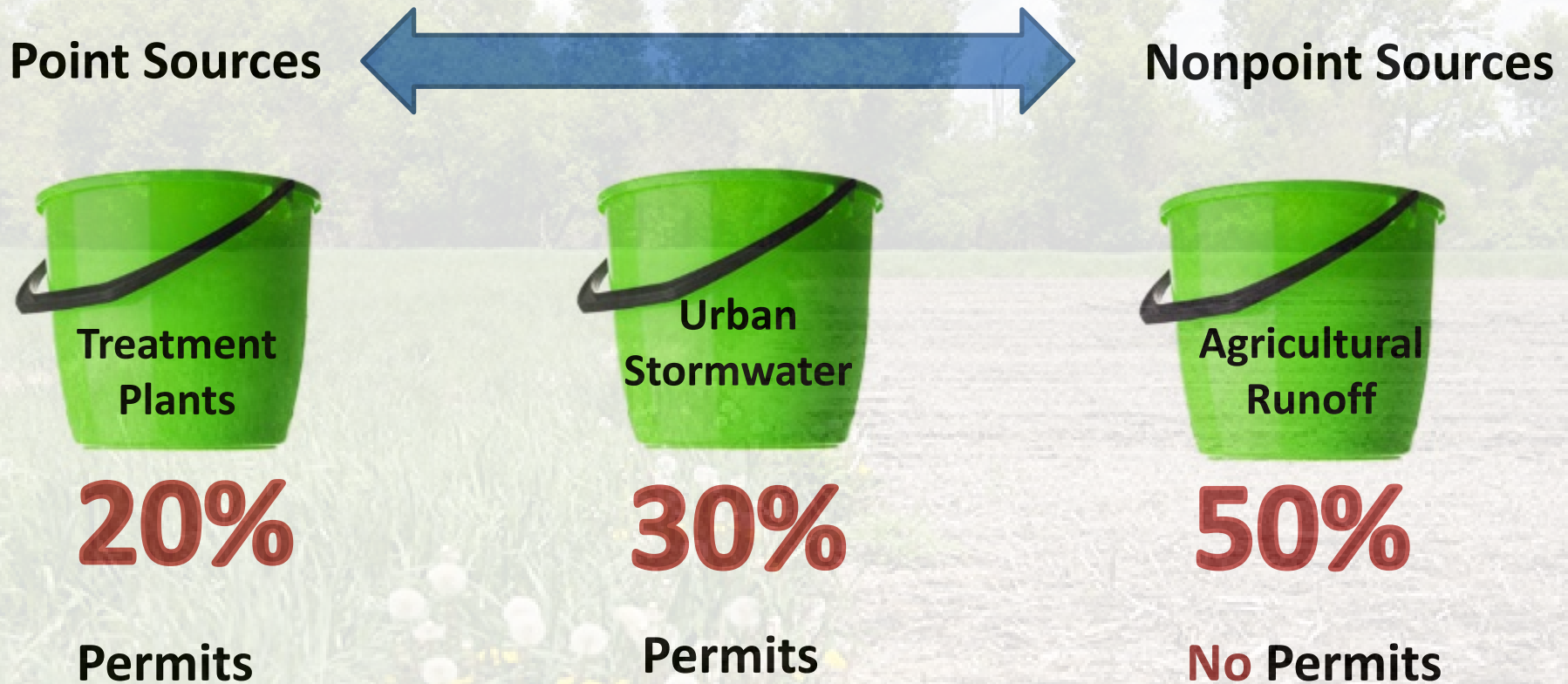


Madison Metropolitan Sewerage District

Reductions Necessary



Focus on All Sources



Partnerships

3

counties with
land in the Yahara
Watershed (Dane,
Columbia & Rock)

23

municipalities
participating in
Yahara WINS



Regional & National Impact



Urban Practices



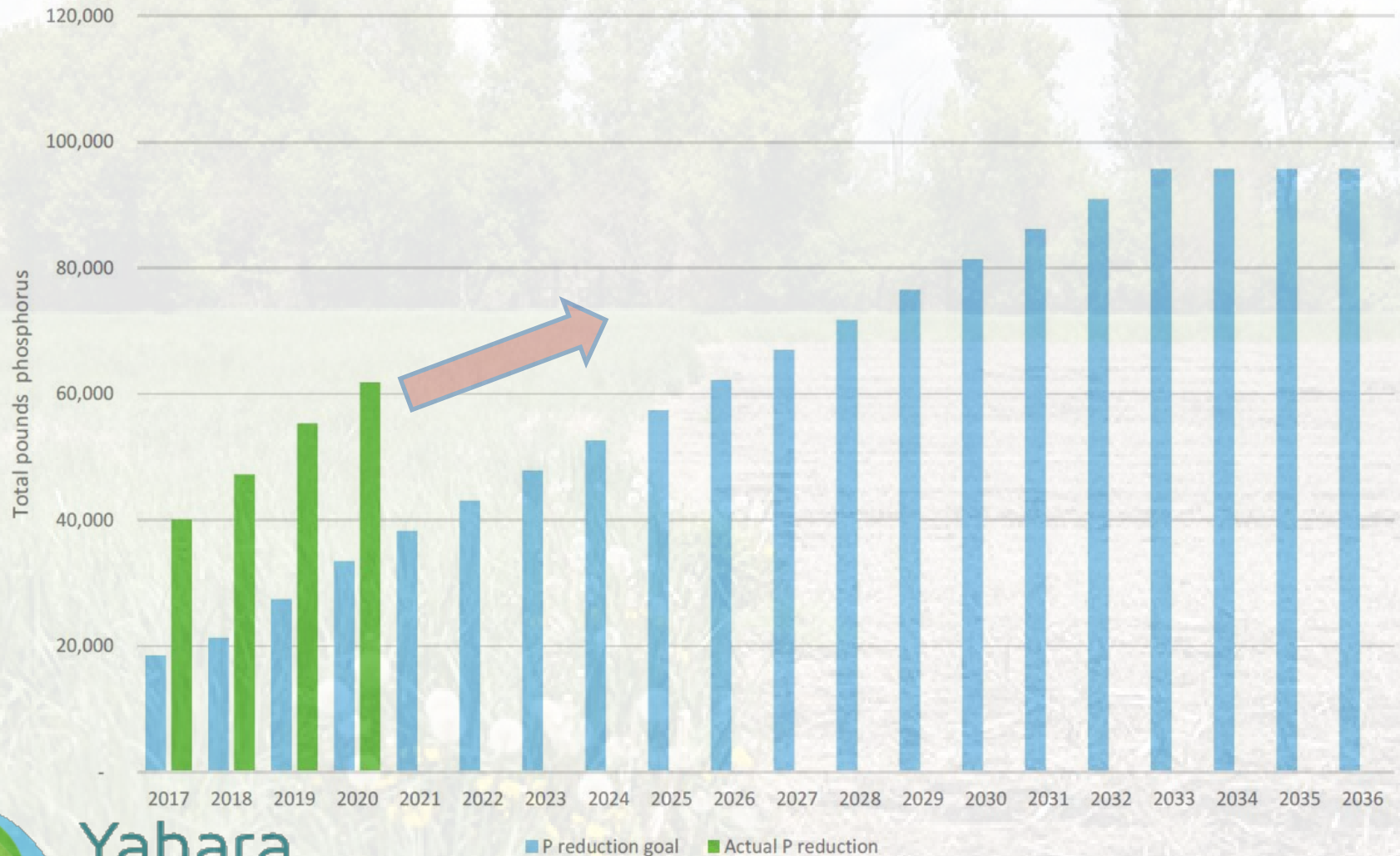
Agricultural Practices



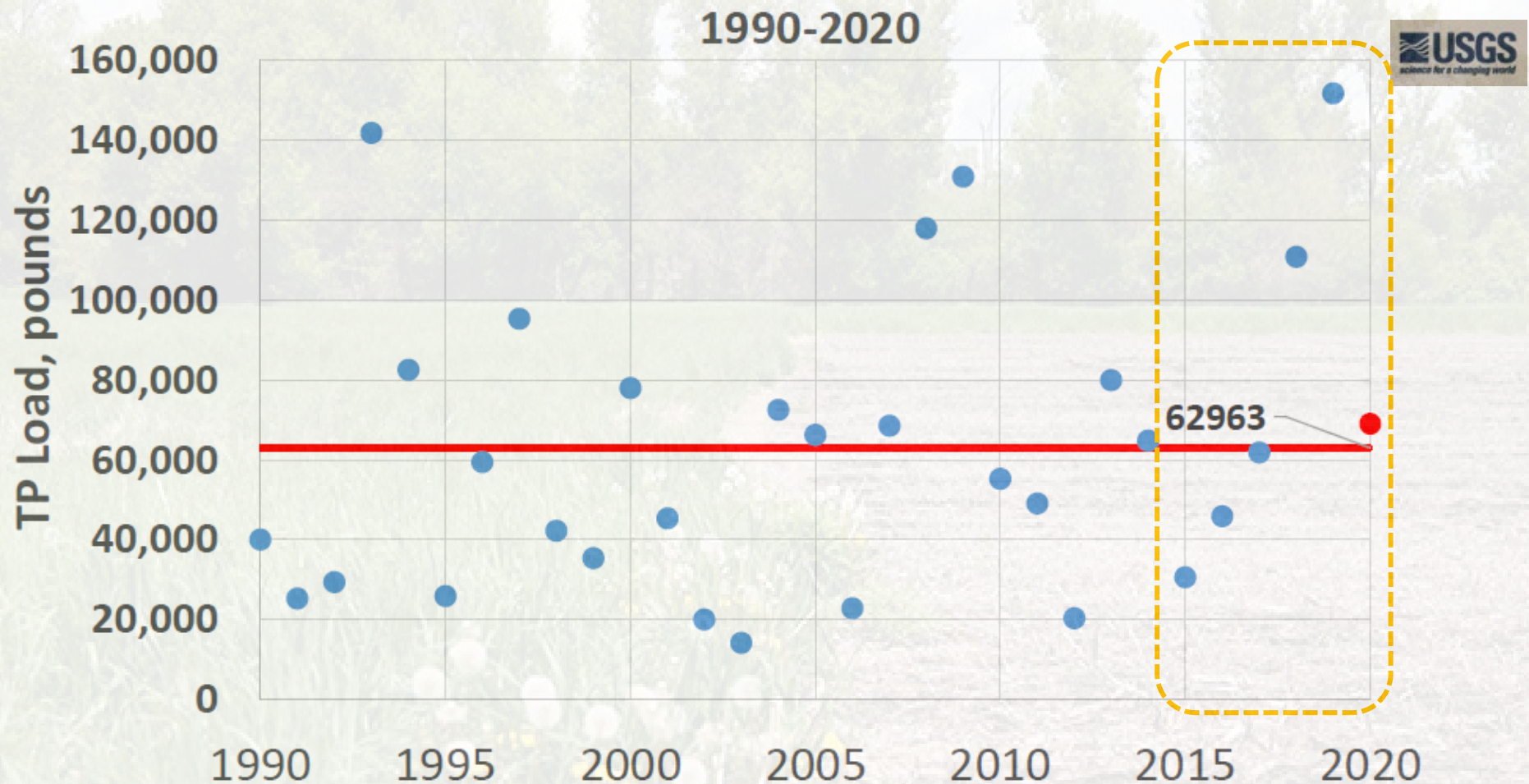
Yahara
WINS

Madison Metropolitan Sewerage District

Phosphorus Reduction Success

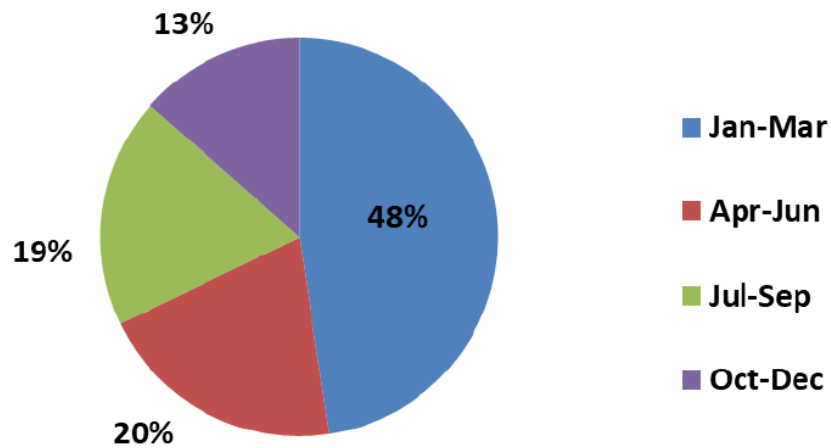


Phosphorus Reduction Challenges

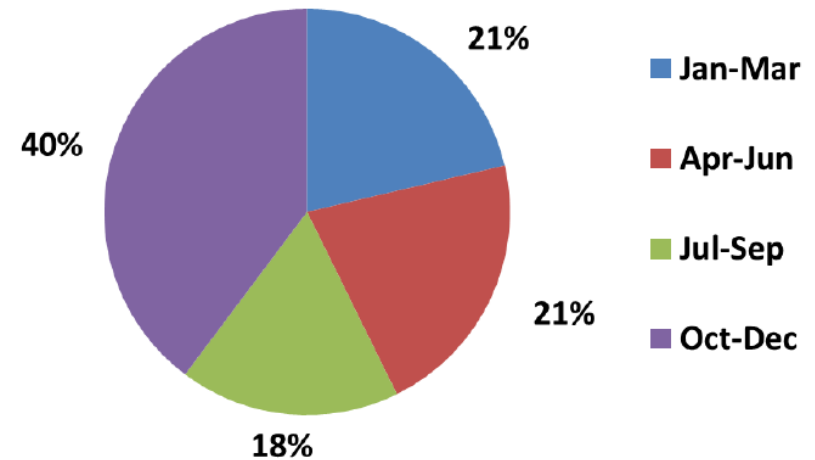


Phosphorus Reduction Challenges

2013-2020



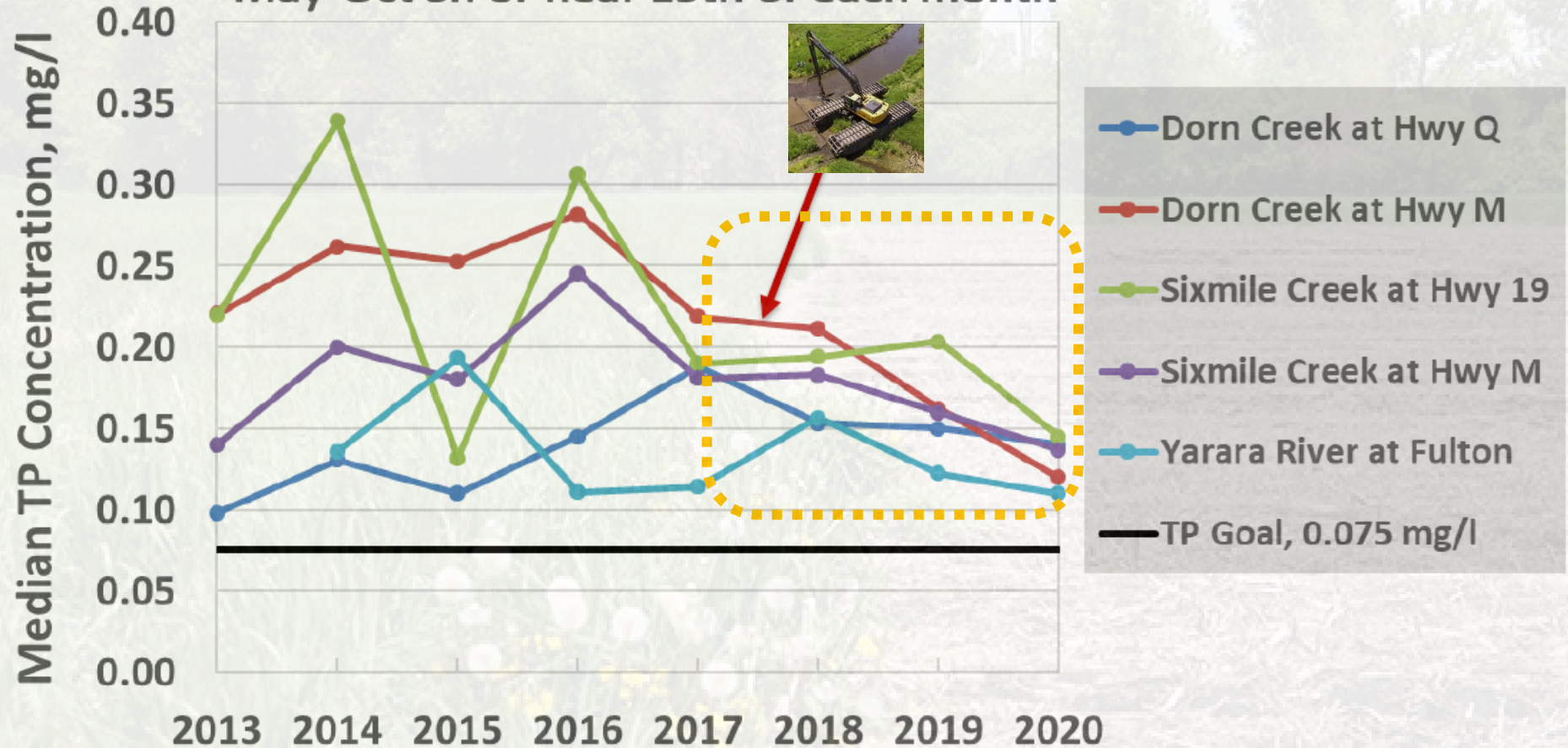
2020



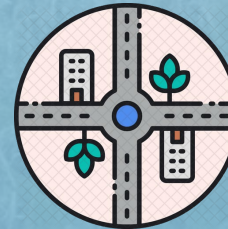
Madison Metropolitan Sewerage District

Instream Phosphorus

Median TP Concentrations
May-Oct on or near 15th of each month



2021 Moving Forward



Yahara
WINS

Madison Metropolitan Sewerage District

2021 Moving Forward



MORE ABOUT WINS



READ THE REPORT



SUCCESS STORIES

WHY YAHARA WINS WORKS



Collaborative

By joining resources and collaboratively contributing to phosphorus reduction, we can better achieve our shared clean water goals than going it alone.



Cost-Effective

Pollution prevention and source reduction is always more cost-effective than treatment. Through sharing financial resources, we can have a greater impact on our local waterways.



Innovative

To tackle an issue of this magnitude, we have to challenge the status quo and creativity, flexibility and innovation are key in adaptive management, the foundational principle of Yahara WINS.



yaharawins.org

Madison Metropolitan Sewerage District



Thank You!

