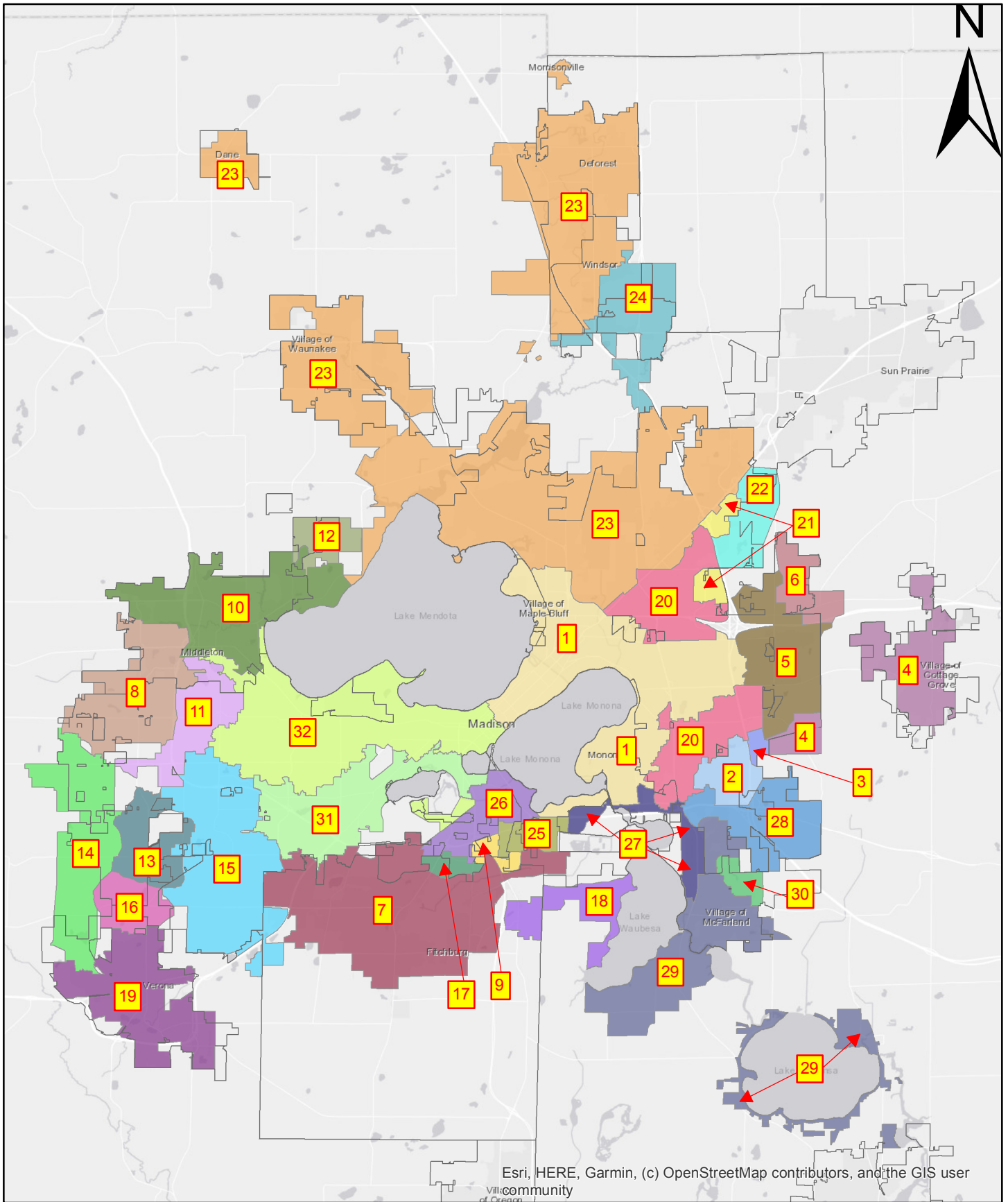


MMSD CONNECTION CHARGE RATES - 2021
APPROVED RESOLUTION 2020-10-29-R5

ITEM	INTERCEPTOR	2020 CFCC AREA RATE	2020 TPCC AREA RATE	2020 COMBINED CONNECT CHG AREA RATE	2021 CFCC AREA RATE	2021 TPCC AREA RATE	2021 COMBINED CONNECT CHG AREA RATE
1	EAST	48.26	61.01	109.27	48.89	77.77	126.66
2	FAR EAST	50.51	61.01	111.52	51.16	77.77	128.93
3	FAR EAST/FAR EAST EXT	61.88	61.01	122.89	62.68	77.77	140.45
4	FAR EAST/COTTAGE GROVE EXT	97.83	61.01	158.84	99.10	77.77	176.87
5	FAR EAST/DOOR CREEK EXT	110.82	61.01	171.83	112.26	77.77	190.03
6	FAR EAST/GASTON ROAD EXT	134.69	61.01	195.70	136.44	77.77	214.21
7	NINE SPRINGS VALLEY	45.71	61.01	106.72	46.30	77.77	124.07
8	NINE SPRINGS VALLEY/ESSER POND EXT	73.73	61.01	134.74	74.69	77.77	152.46
9	NINE SPRINGS VALLEY/HWY 14 EXT	120.01	61.01	181.02	121.56	77.77	199.33
10	NINE SPRINGS VALLEY/MENDOTA EXT NORTH	61.46	61.01	122.47	62.26	77.77	140.03
11	NINE SPRINGS VALLEY/MENDOTA EXT SOUTH	65.28	61.01	126.29	66.13	77.77	143.90
12	NINE SPRINGS VALLEY/MENDOTA-BISHOPS BAY	75.61	61.01	136.62	76.59	77.77	154.36
13	NINE SPRINGS VALLEY/MIDTOWN BASIN	81.79	61.01	142.80	82.85	77.77	160.62
14	LOWER BADGER MILL CREEK RATE	195.40	61.01	256.41	197.93	77.77	275.70
15	NINE SPRINGS VALLEY/MINERAL POINT EXT	57.55	61.01	118.56	58.30	77.77	136.07
16	NINE SPRINGS VALLEY/MORSE POND EXT	201.95	61.01	262.96	204.57	77.77	282.34
17	NINE SPRINGS VALLEY/SYENE EXT	179.36	61.01	240.37	181.68	77.77	259.45
18	NINE SPRINGS VALLEY/WAUBESA EXT	49.34	61.01	110.35	49.98	77.77	127.75
19	PS 17 SERVICE AREA	130.36	61.01	191.37	132.05	77.77	209.82
20	NORTHEAST	51.04	61.01	112.05	51.70	77.77	129.47
21	NORTHEAST/LIEN EXT	60.35	61.01	121.36	61.13	77.77	138.90
22	NORTHEAST/LIEN INTERSTATE EXT	79.30	61.01	140.31	80.33	77.77	158.10
23	NORTHEAST/WAUNAKEE-DEFOREST EXT	90.33	61.01	151.34	91.50	77.77	169.27
24	NORTHEAST/HIGHWAY 19 EXT	128.56	61.01	189.57	130.23	77.77	208.00
25	RIMROCK	34.29	61.01	95.30	34.73	77.77	112.50
26	SOUTH	75.01	61.01	136.02	75.98	77.77	153.75
27	SOUTHEAST	66.15	61.01	127.16	67.01	77.77	144.78
28	SOUTHEAST/BLOOMING GROVE EXT	54.39	61.01	115.40	55.09	77.77	132.86
29	SOUTHEAST/MCFARLAND RELIEF	91.58	61.01	152.59	92.77	77.77	170.54
30	SOUTHEAST/SIGGELKOW EXTENSION	145.55	61.01	206.56	147.44	77.77	225.21
31	SOUTHWEST	70.81	61.01	131.82	71.73	77.77	149.50
32	WEST INT	51.63	61.01	112.64	52.30	77.77	130.07
33	CITY OF MADISON CONNECTIONS WITHIN THE BROADWAY SEWER DISTRICT SHALL PAY THE CURRENT NORTHEAST INTERCEPTOR RATE						
34	CITY OF MADISON CONNECTIONS WITHIN THE LIEN SEWER DISTRICT SHALL PAY THE CURRENT NORTHEAST INTERCEPTOR RATE						
35	7-27-2017, NEW TREATMENT PLANT CONNECTION CHARGE RATES WILL BE IMPLEMENTED BEGINNING JANUARY 1, 2019 AND WILL BE PHASED IN OVER 8 YEARS, FINAL ADJUSTMENT ON JANUARY 1, 2026	2020 \$61.01	per 1000sf		2021 \$77.77	per 1000sf	



Esri, HERE, Garmin, (c) OpenStreetMap contributors, and the GIS user community



Conveyance Facility Basins

User Name: curts
Date: 11/2/2020