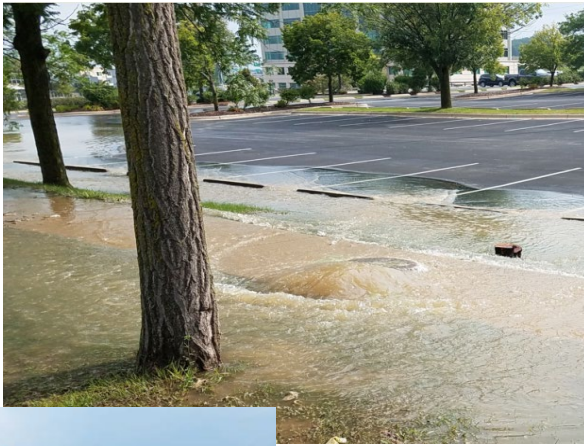


Accept: Infiltration and Inflow Reduction Program Plan

Commission Meeting
April 29, 2021





I/I reduction provides value by

- ❑ Increasing resilience to changing weather patterns
- ❑ Deferring needs for capacity increases
- ❑ Improving system performance
- ❑ Meeting regulatory requirements



I/I Program Timeline to Date



Program Framework

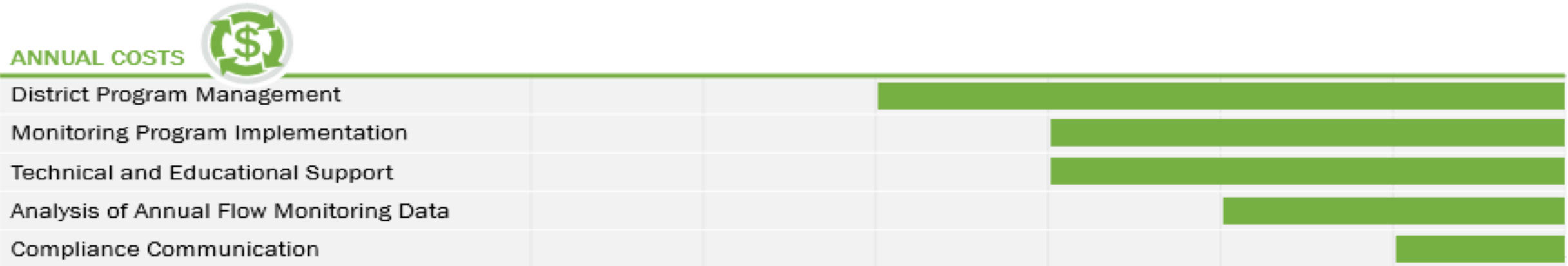
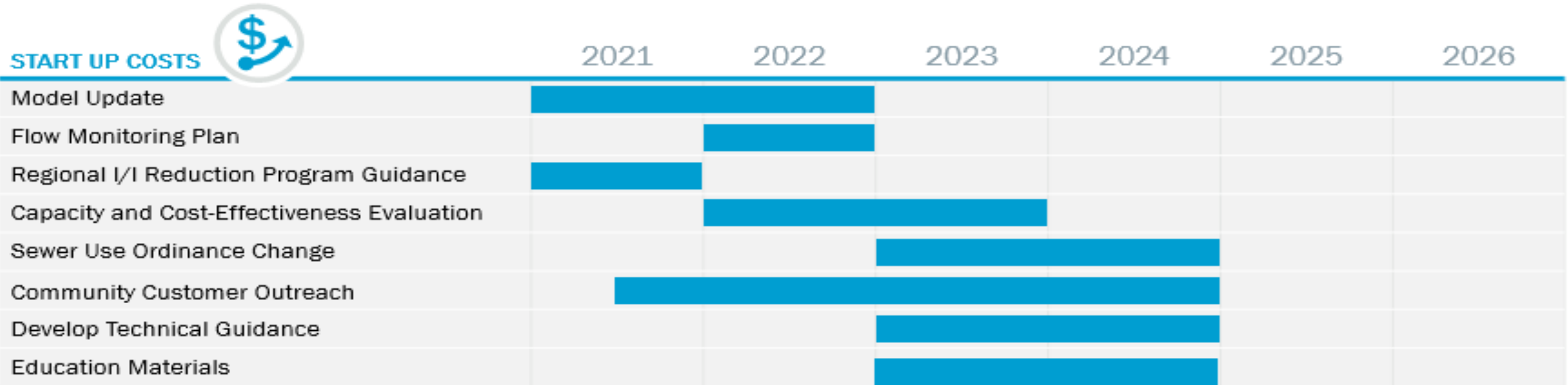
Goal: Maintain the flow standards defined by the District's sewer use ordinance.

Program components:

- Administration
- Technical support and education resources
- Sewer Use Ordinance update
- Flow monitoring
- Work plans for non-compliant areas



Implementation Plan



	Current Year (Existing budget)	Year 1	Year 2	Year 3	Year 4	Year 5
Estimated Ramp-Up Plan Costs by Year:	100,000	175,000	\$250,000	\$400,000	\$450,000	\$500,000

Principles for the Inflow and Infiltration Reduction Program	O-1 Owner Confidence	O-2A Wastewater Collection & Treatment	O-2B Resource Conservation & Recovery	O-2C Financial Sustainability
Public interests considered during I/I program development.	X	X	X	X
Adheres to Capacity Management Operations and Maintenance regulatory requirements.	X	X	X	
Treating excess clear water is not environmentally responsible, efficient, or fiscally responsible.	X	X	X	X
Balance providing appropriate regional benefits while respecting local control of funds.	X			X

Resolution 2021-04-29-R6

Requested Action:

The Commission is requested to adopt resolution 2021-04-29-R6

- 1) Accept the Infiltration and Inflow Reduction Program Plan
- 2) Approve the guiding principles for the program



Questions?

Madison Metropolitan
Sewerage District

Visitor

Madison Metropolitan
Sewerage District

Madison Metropolitan Sewerage District

Madison Metropolitan Sewerage District