

Review and Adoption of:

- 2021 Connection Charge Rates
- 2021 Plan Review, Direct Connection and Annexation Fees

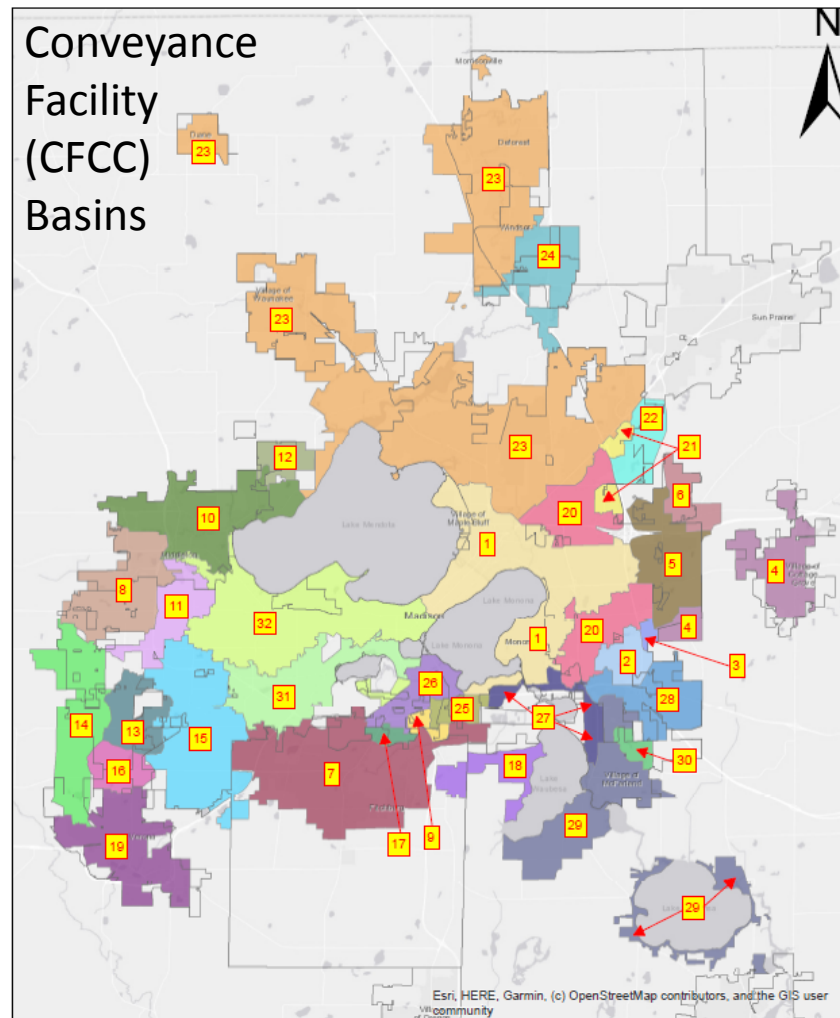


2021 Connection Charge Rates

- Conveyance Facility Connection Charges (CFCC)
 - Pipes, pump stations and associated infrastructure that convey wastewater to and from the treatment plant
 - 32 separate CFCC basins / rates
 - Adjusted annually by ENR Construction Cost Index
 - Increase for 2021 CFCC rates is +1.3%



2021 Connection Charge Rates

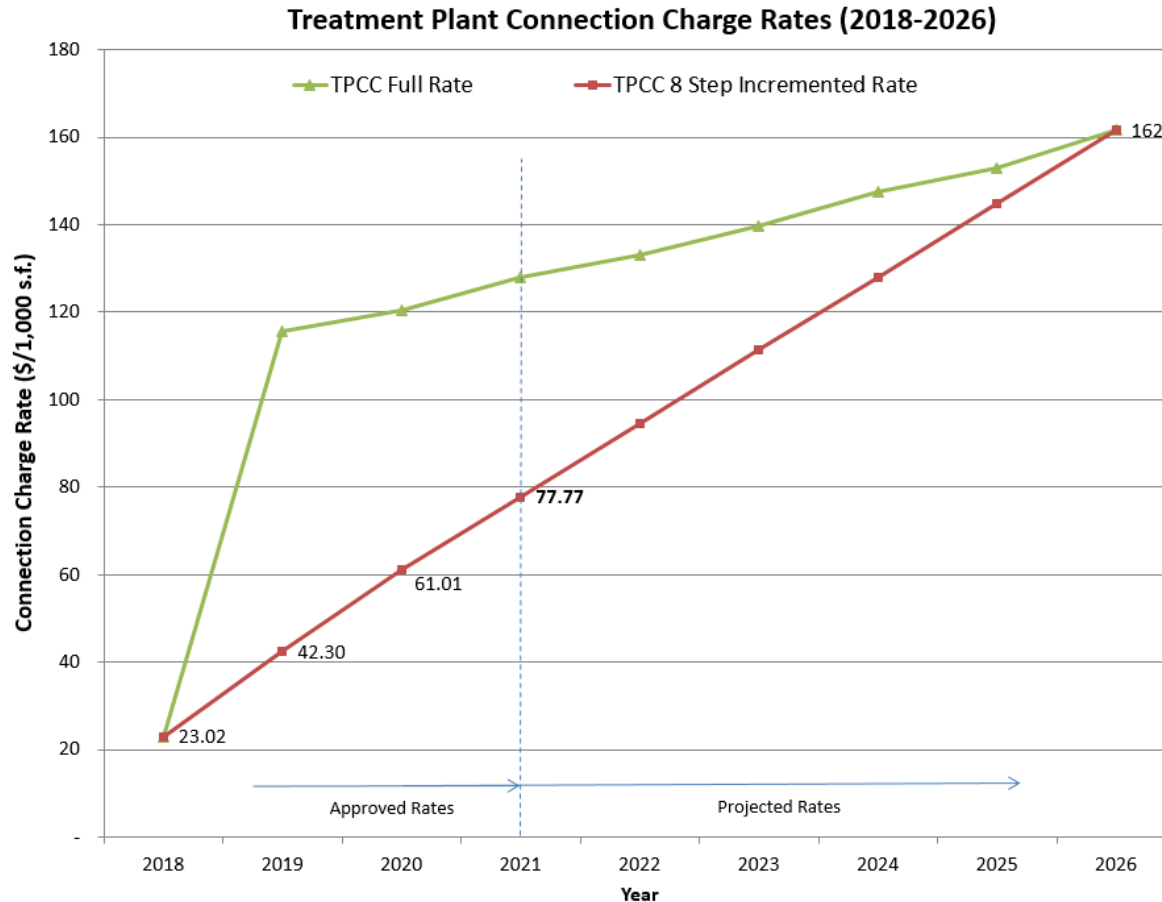


2021 Connection Charge Rates

- Treatment Plant Connection Charges (TPCC)
 - Represents value of the treatment plant
 - One TPCC rate, district wide
 - 2021 is year 3 of an eight-year phase in of the full TPCC rate, in approximately equal increments
 - Increase for average size lot is \$192.74 from 2020



2021 Connection Charge Rates



2021 Connection Charge Rates

MMSD CONNECTION CHARGE RATES - 2021 DRAFT: NOT YET APPROVED		2020 CFCC AREA RATE	2020 TPCC AREA RATE	2020 COMBINED CONNECT CHG AREA RATE	2021 CFCC AREA RATE	2021 TPCC AREA RATE	2021 COMBINED CONNECT CHG AREA RATE
ITEM	INTERCEPTOR						
1	EAST	48.28	61.01	109.27	48.89	77.77	126.66
2	FAR EAST	50.51	61.01	111.52	51.16	77.77	128.93
3	FAR EAST/FAR EAST EXT	61.88	61.01	122.89	62.68	77.77	140.45
4	FAR EAST/COTTAGE GROVE EXT	97.83	61.01	158.84	99.10	77.77	176.87
5	FAR EAST/DOOR CREEK EXT	110.82	61.01	171.83	112.26	77.77	190.03
6	FAR EAST/GASTON ROAD EXT	134.69	61.01	195.70	136.44	77.77	214.21
7	NINE SPRINGS VALLEY	45.71	61.01	106.72	46.30	77.77	124.07
8	NINE SPRINGS VALLEY/ESSER POND EXT	73.73	61.01	134.74	74.69	77.77	152.46
9	NINE SPRINGS VALLEY/HWY 14 EXT	120.01	61.01	181.02	121.56	77.77	199.33
10	NINE SPRINGS VALLEY/MENDOTA EXT NORTH	61.46	61.01	122.47	62.26	77.77	140.03
11	NINE SPRINGS VALLEY/MENDOTA EXT SOUTH	65.28	61.01	126.29	66.13	77.77	143.90
12	NINE SPRINGS VALLEY/MENDOTA-BISHOPS BAY	75.61	61.01	136.62	76.59	77.77	154.36
13	NINE SPRINGS VALLEY/MIDTOWN BASIN	81.79	61.01	142.80	82.85	77.77	160.62
14	LOWER BADGER MILL CREEK RATE	195.40	61.01	256.41	197.93	77.77	275.70
15	NINE SPRINGS VALLEY/MINERAL POINT EXT	57.55	61.01	118.56	58.30	77.77	136.07
16	NINE SPRINGS VALLEY/MORSE POND EXT	201.95	61.01	262.96	204.57	77.77	282.34
17	NINE SPRINGS VALLEY/SYENE EXT	179.36	61.01	240.37	181.68	77.77	259.45
18	NINE SPRINGS VALLEY/WAUBESA EXT	49.34	61.01	110.35	49.98	77.77	127.75
19	PS 17 SERVICE AREA	130.36	61.01	191.37	132.05	77.77	209.82
20	NORTHEAST	51.04	61.01	112.05	51.70	77.77	129.47
21	NORTHEAST/LIEN EXT	60.35	61.01	121.36	61.13	77.77	138.90
22	NORTHEAST/LIEN INTERSTATE EXT	79.30	61.01	140.31	80.33	77.77	158.10
23	NORTHEAST/WAUNAKEE-DEFOREST EXT	90.33	61.01	151.34	91.50	77.77	169.27
24	NORTHEAST/HIGHWAY 19 EXT	128.56	61.01	189.57	130.23	77.77	208.00
25	RIMROCK	34.29	61.01	95.30	34.73	77.77	112.50
26	SOUTH	75.01	61.01	136.02	75.98	77.77	153.75
27	SOUTHEAST	66.15	61.01	127.16	67.01	77.77	144.78
28	SOUTHEAST/BLOOMING GROVE EXT	54.39	61.01	115.40	55.09	77.77	132.86
29	SOUTHEAST/MCFARLAND RELIEF	91.58	61.01	152.59	92.77	77.77	170.54
30	SOUTHEAST/SIGGELKOW EXTENSION	145.55	61.01	206.56	147.44	77.77	225.21
31	SOUTHWEST	70.81	61.01	131.82	71.73	77.77	149.50
32	WEST INT	51.63	61.01	112.64	52.30	77.77	130.07
33	CITY OF MADISON CONNECTIONS WITHIN THE BROADWAY SEWER DISTRICT SHALL PAY THE CURRENT NORTHEAST INTERCEPTOR RATE						
34	CITY OF MADISON CONNECTIONS WITHIN THE LIEN SEWER DISTRICT SHALL PAY THE CURRENT NORTHEAST INTERCEPTOR RATE						
35	7-27-2017, NEW TREATMENT PLANT CONNECTION CHARGE RATES WILL BE IMPLEMENTED BEGINNING JANUARY 1, 2019 AND WILL BE PHASED IN OVER 8 YEARS, FINAL ADJUSTMENT ON JANUARY 1, 2026	2020 \$61.01	per 1000sf		2021 \$77.77	per 1000sf	

2021 Review Fees

- Fee structure established in 2015 after thorough review of costs
- Costs related to Review Fees are periodically reviewed, no increases for 2021 are recommended based on current review



2021 Review Fees

	2020	2021
Annexation fee per petitioned annexation area	\$3,375	\$3,375
Annexation fee per expedited annexation area	\$1,425	\$1,425
Plan review fee per sewer extension plan serving a new area	\$1,550	\$1,550
Direct connection fee	\$1,150	\$1,150



Questions?



Madison Metropolitan Sewerage District mmst

