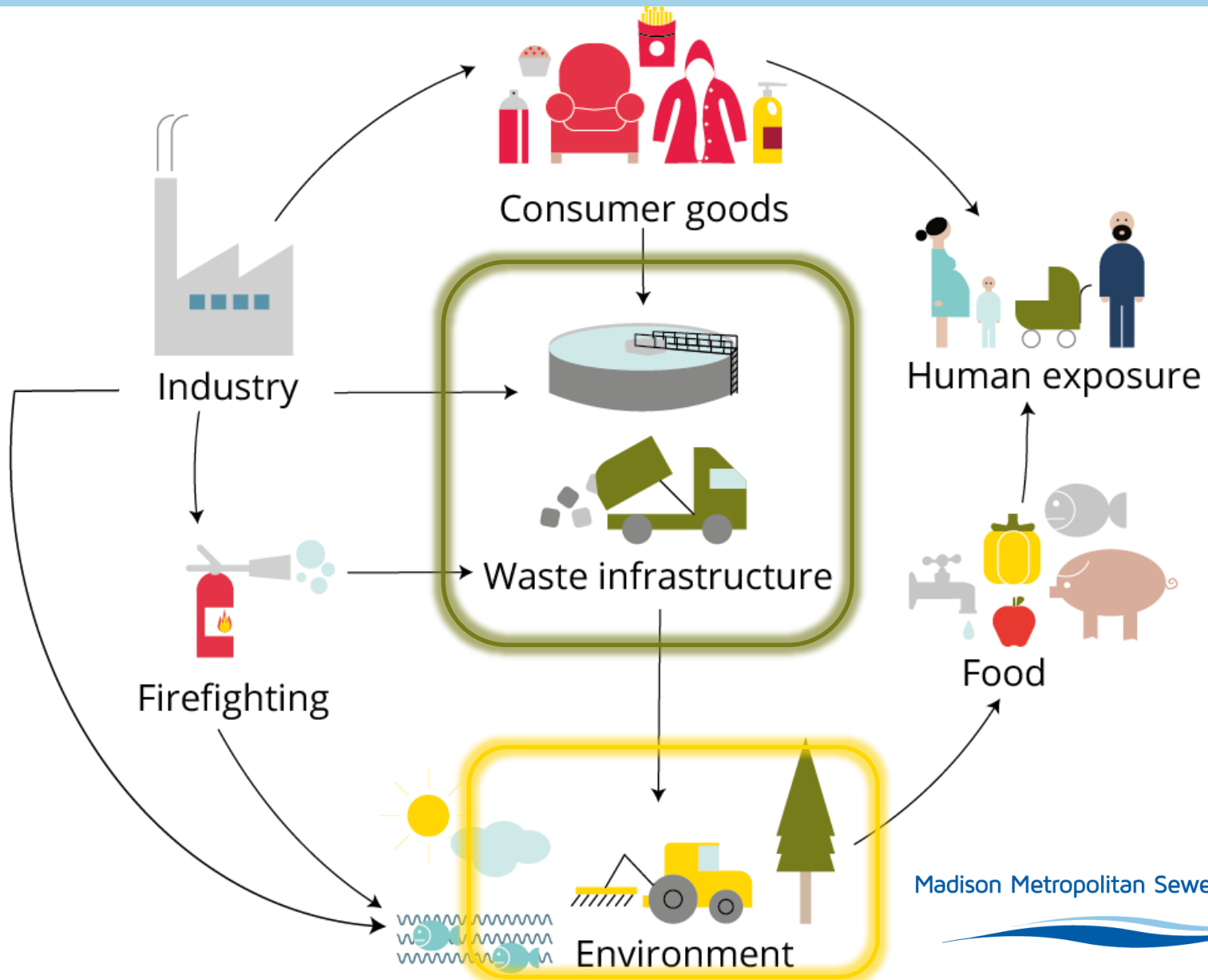


# Knowledge is Evolving



# District Action Plan



**Industrial Permits**



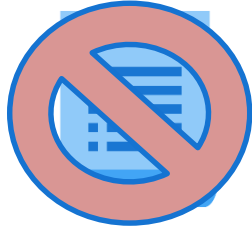
**Pollution Prevention**



**Ordinance**



# Sewer Use Ordinance



**No violation of the District's WPDES permit  
or interfere with plant operations**



**No impact to safety  
No impact to resource recovery and reuse  
No detrimental effect  
No condition unacceptable to public agency**

**no ordinance changes needed**



# Industrial Permits



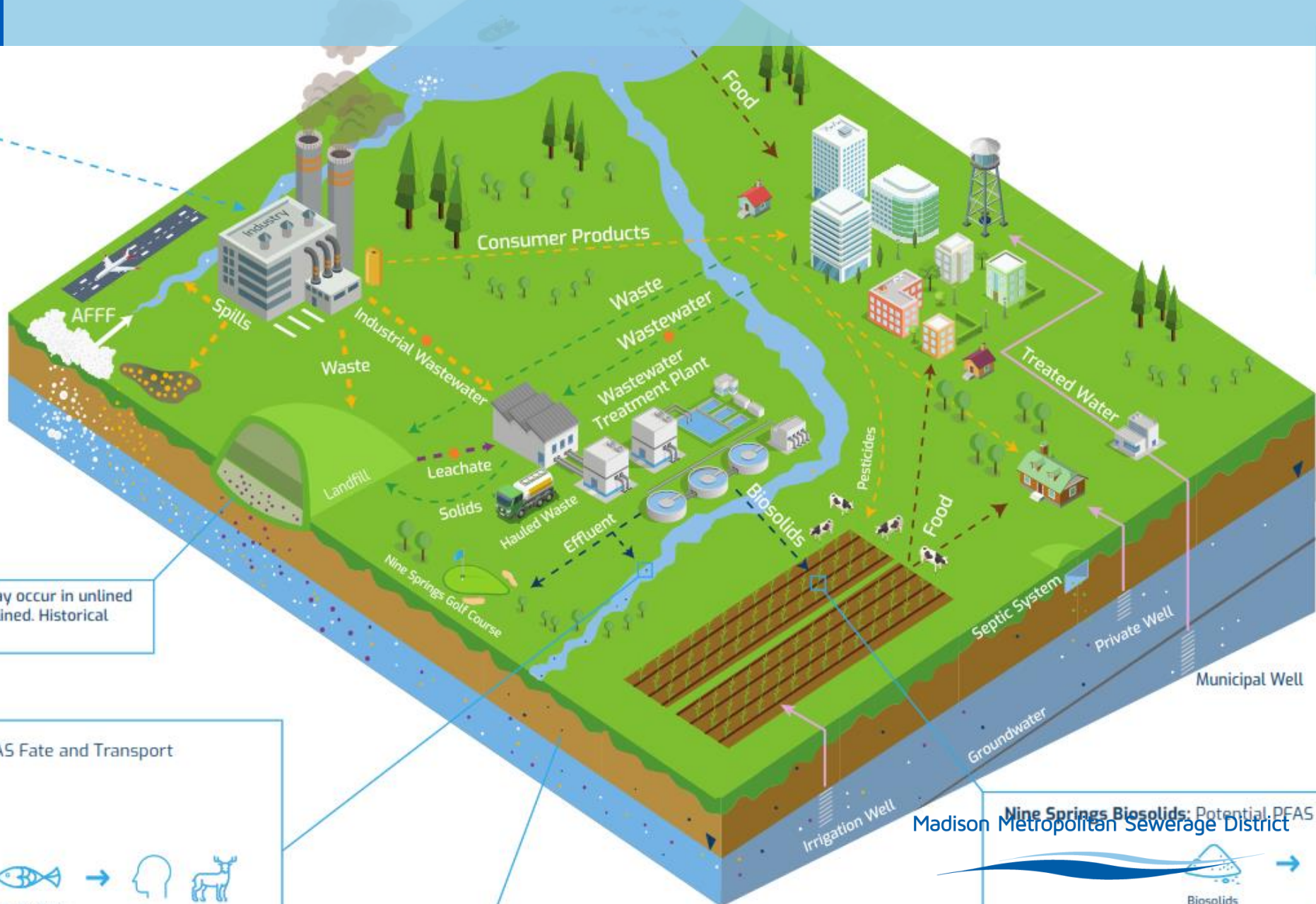
Madison Metropolitan Sewerage District

# Pollution Prevention

**Source Identification**  
**Source Minimization**  
**Maintaining Reductions**



# Source Identification



may occur in unlined  
y lined. Historical

PFAS Fate and Transport



Nine Springs Biosolids: Potential PFAS F  
Madison Metropolitan Sewerage District



# Source Identification





# Source Minimization





# Maintaining Reductions

**Quantify Reductions**

Madison Metropolitan Sewerage District



# Next Steps

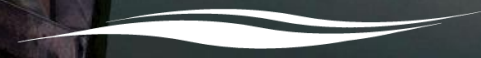






# Recommendation

Madison Metropolitan Sewerage District





Thank you!

